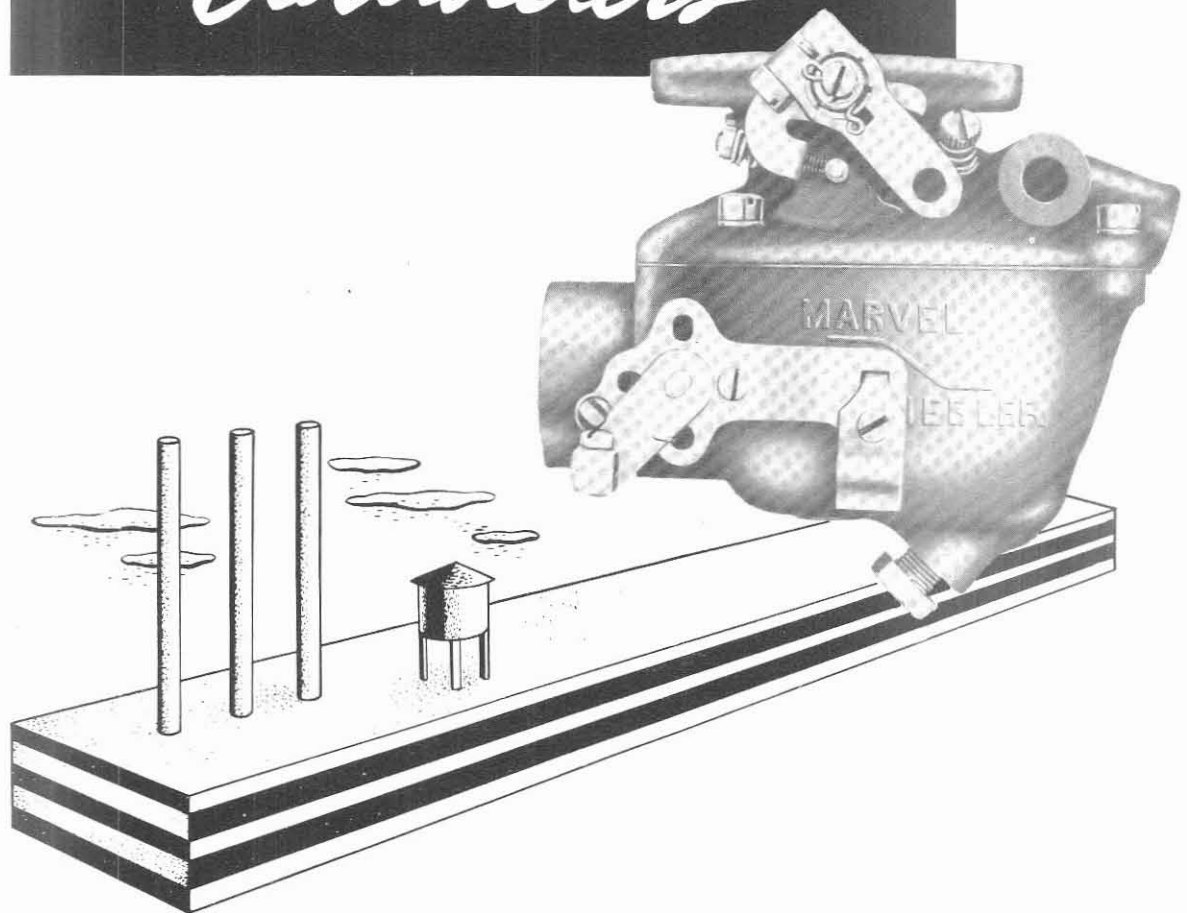


SECTION II
D. W. ONAN ENGINES
TSX SERIES

INDUSTRIAL

Carbureters



MARVEL-SCHEBLER PRODUCTS DIVISION,
BORG-WARNER CORPORATION

Warranty

Marvel-Schebler Products Division, Borg-Warner Corporation, warrant its carbureters against defects in material and workmanship for a period of ninety days. Defective merchandise will be replaced without charge but labor charges incurred in the removal, disassembly or reinstallation of such products will not be allowed. No merchandise can be returned without written permission from the factory, transportation charges must be prepaid. The factory shall be the sole judge of defects in products returned.

A ten per cent handling charge will be made for all merchandise returned that is not defective. All prices are subject to change without notice, and we reserve the right to limit quantities and to make partial shipments unless specifically instructed otherwise. The obligation of the company under this warranty is limited to replacing at the factory, any complete units or parts thereof which shall be returned and which our examination shall disclose to have been defective.

Introduction...

This section of the master manual is an individual parts catalog of all service parts for Marvel-Schebler carbureters listed on the identification charts. The catalog is broken down into groups of fifteen carbureters; each group containing an identification chart, an exploded drawing of a composite carbureter, and a parts list. Each part in the illustration bears a reference number which keys together the illustration and parts list.

NOTE: The illustration does not represent any specific carbureter within a series, but is typical of all of them. All parts that look different are shown adjacent to the part of the basic carbureter that they replace.

TO USE THE CATALOG

- (1) Locate the group which contains the carbureter in question by referring to the identification charts.
- (2) Visually locate the part desired in the exploded drawing and note its reference number.
- (3) Turn to the parts list opposite the reference number of the part for its complete part name and part number.

ONAN — INDUSTRIAL CARBURETERS

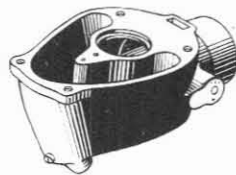
ISSUED JULY 1952

Model Application	Engine	Carbureter Number	Carbureter Part No.	Fuel	Superseded by	Customer Part No.	Repair Kit No.	Gasket Kit No.	Float Valve & Seat Assy
WC4-5	Ford 4 cyl. Commercial	TSX-126	10-2524	Gasoline	TSX-481	76690	286-731	16-597	233-536
CWC4.5	Cont. Y-91	TSX-128	10-2549	Gasoline	142-18	286-757	16-592	233-536
10EL, WC4-7.5	Ford 4 cyl. Commercial	TSX-211	10-2814	Gasoline	TSX-481	76690-B	286-775	16-597	233-536
35 JT	Cont. M-330	TSX-373	10-3297	Natural Gas & Gasoline	142C-278	286-881	16-594	233-543
10EL, WC4-7.5	Ford 4 cyl. Commercial	TSX-481	10-3521	Gasoline	142C-321	286-985	16-597	233-536

◆ The repair kit includes the throttle shaft, float valve and seat assembly, and the gasket kit.

§ The flange gasket can be supplied separately. Specify the carbureter number when ordering.

BASIC SUBASSEMBLIES



CARBURETER BODY ASSY

Carbureter Number	Part Number
TSX-126	10-2551
TSX-128	10-2556
TSX-211	10-2815
TSX-373	10-3298
TSX-481	10-3522



THROTTLE BODY & SHAFT ASSY

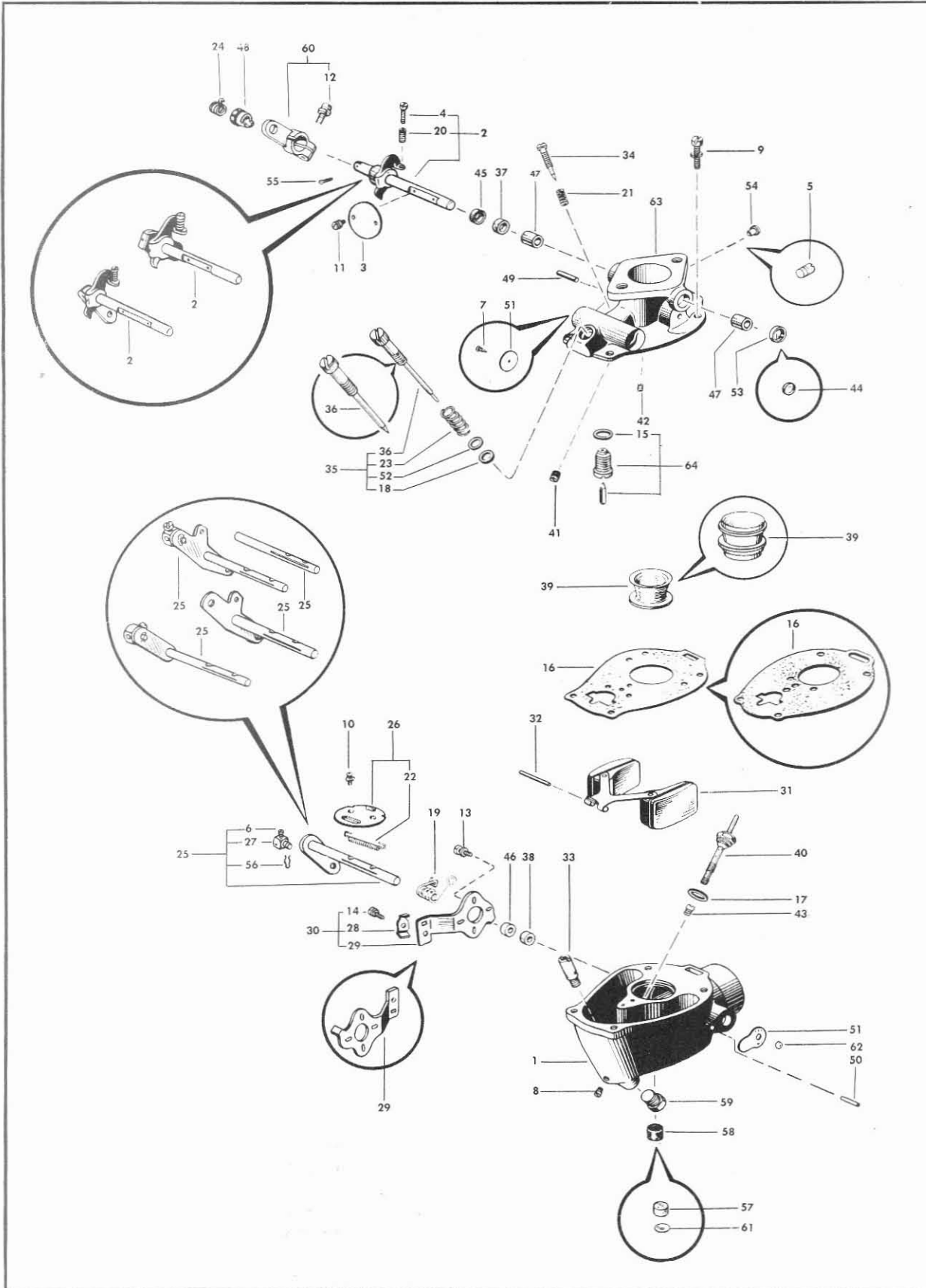
Carbureter Number	Part Number
TSX-126	227-866
TSX-128	227-868
TSX-211	227-866
TSX-373	227-1192
TSX-481	227-866

ONAN

Ref. No.	Part Name	Part No.	TSX-126	TSX-128	TSX-211	TSX-373	TSX-481
1	Body Assy — Carbureter	(See Basic Subassy)	1	1	1	1	1
2	Shaft, Stop, & Lever Assy — Throttle	13-856	1	—	1	—	1
		13-858	—	1	—	—	—
		13-819	—	—	—	1	—
3	Valve — Throttle (22°)	14-163	—	—	—	1	—
		(15°)	1	1	1	—	1
4	Screw — Throttle Stop (No. 8-32 x 3/4)	15-42	1	1	1	1	1
5	Screw — Idle Drilling (Headless, 1/4-28)	15-223	—	1	—	—	—
		(Headless, 5/16-24)	—	—	—	1	—
6	Screw — Choke Swivel (No. 8-32 x 5/16)	15-285	—	1	1	1	—
7	Screw — Drive, Numbering Plate (No. 2 x 1/4)	15-343	—	—	—	1	—
8	Screw — Drill Plug, Nozzle Hole (No. 8-32)	15-409	1	—	1	—	1
9	Screw & Lock Washer Assy — Throttle Body to Bowl (No. 12-24 x 5/8)	15-A82	4	4	4	—	4
		15-A85	—	—	—	4	—
10	Screw & Lock Washer Assy — Choke Valve (No. 4-40 x 1/4)	15-483	—	—	—	2	—
		15-A91	2	2	2	—	2
11	Screw & Lock Washer Assy — Throttle Valve (No. 4-40 x 1/4)	15-483	—	—	—	2	—
		15-A91	2	2	2	—	2

ONAN — INDUSTRIAL

TSX-126 to TSX-481



Marvel-Schebler Products Division, Borg-Warner Corporation, Decatur, Illinois, U. S. A.

ONAN			TSX-126	TSX-128	TSX-211	TSX-373	TSX-481
Ref. No.	Part Name	Part No.					
12	Screw & Lock Washer Assy — Governor Lever Clamp (No. 12-24 x 5/8)	15-A82	-	-	-	1	-
13	Screw & Lock Washer Assy — Choke Bracket to Body (No. 8-32 x 3/8)	15-A93	1	1	1	2	-
14	Screw & Lock Washer Assy — Choke Bracket (No. 8-32 x 5/16)	15-A99	1	1	1	1	-
15	Gasket — Float Valve Seat	16-4	1	1	1	1	1
16	Gasket — Throttle Body to Bowl	16-80	1	1	1	-	1
		16-A12	-	-	-	1	-
17	Gasket — Main Nozzle	16-449	1	1	1	-	1
		16-492	-	-	-	1	-
18	Gasket — Power Adjusting Needle	16-491	1	1	1	1	1
19	Spring — Choke Return	24-213	-	-	-	1	-
		24-247	-	1	1	-	-
20	Spring — Throttle Stop Screw	24-262	1	1	1	1	1
21	Spring — Idle Needle	24-340	1	1	1	1	1
22	Spring — Choke Valve Flapper	24-292	-	-	-	1	-
		24-425	-	1	-	-	1
		24-A43	1	-	1	-	-
23	Spring — Power Adjusting Needle	24-A1	1	1	1	1	1
24	Spring — Governor Lever Tension	24-A37	-	-	-	1	-
25	Shaft — Choke	26-271	-	-	-	-	1
	Shaft & Lever Assy — Choke	26-610	-	-	-	1	-
		26-660	-	1	-	-	-
		26-677	1	-	-	-	-
		26-706	-	-	1	-	-
26	Valve Assy — Choke	27-539	-	1	-	-	1
		27-548	-	-	-	1	-
		27-550	1	-	1	-	-
27	Swivel — Choke Lever	28-49	-	1	-	1	-
		28-51	-	-	1	-	-
		28-100	1	-	-	-	-
28	Clip — Choke Bracket	29-81	1	1	1	1	-
29	Bracket — Choke	29-95	-	-	-	1	-
		29-104	1	1	1	-	-
30	Bracket Assy — Choke	29-521	-	-	-	1	-
		29-528	1	1	1	-	-
31	Float & Lever Assy	30-600	1	1	1	-	1
		30-621	-	-	-	1	-
32	Shaft — Float Lever	32-16	-	-	-	1	-
		32-27	1	1	1	-	1
33	Seat — Power Adjusting Needle	36-297	-	-	-	1	-
34	Needle — Idle Adjusting	43-33	1	1	1	-	1
		43-58	-	-	-	1	-
35	Needle Assy — Power Adjusting (complete)	43-619	-	1	-	-	-
		43-620	-	-	-	1	-
		43-641	1	-	1	-	1
36	Needle Assy — Power Adjusting	43-627	-	1	-	-	-
		43-628	1	-	1	-	1
		43-631	-	-	-	1	-
37	Packing — Throttle Shaft	44-35	-	-	-	1	-
		†44-38	-	1	-	-	-
38	Packing — Choke Shaft	†44-38	-	-	-	1	-
		‡44-39	1	1	1	-	1

† 44-38 replaced by 44-63. No retainer is required when new packing is used.

‡ 44-39 replaced by 44-66. No retainer is required when new packing is used.

ONAN — INDUSTRIAL

TSX-126 to TSX-481

ONAN			TSX-126	TSX-128	TSX-211	TSX-373	TSX-481
Ref. No.	Part Name	Part No.					
39	Venturi (29/32" Diameter Throat)	46-438	-	-	-	1	-
	(5/8" Diameter Throat)	46-448	-	1	-	-	-
	(11/16" Diameter Throat)	46-467	1	-	1	-	1
40	Nozzle — Main	47-180	1	1	1	-	1
		47-199	-	-	-	1	-
41	Jet — Idle	49-101-L	-	1	-	-	-
		49-165	1	-	1	1	1
42	Jet — Economizer	49-154	-	-	-	1	-
		49-161	1	1	1	-	1
43	Jet — Power	49-162	1	-	1	-	1
		49-176	-	1	-	-	-
44	Cup — Throttle Shaft	55-214	-	-	-	1	-
		55-230	-	1	-	-	-
45	Retainer — Throttle Shaft Packing	55-216	-	-	-	1	-
		55-231	-	1	-	-	-
46	Retainer — Choke Shaft Packing	55-243	1	1	1	-	1
47	Bushing — Throttle Shaft	60-260	-	-	-	2	-
48	Bushing — Governor Lever	60-370	-	-	-	1	-
49	Pin — Throttle Stop	62-167	1	1	1	1	1
50	Pin — Choke Stop	62-237	-	-	-	-	1
51	Plate — Numbering	(Specify TSX Number)	1	1	1	1	1
52	Washer — Flat, Power Adjusting Needle	78-299	1	1	1	1	1
53	Plug — Throttle Shaft	80-169	-	-	1	-	1
54	Plug — Idle Drilling	80-171	1	-	1	-	1
55	Pin — Cotter (Governor Spring Tension)	82-1	-	-	-	1	-
56	Cotter — Hairpin (Choke Swivel)	82-16	1	1	1	1	-
57	Strainer — Fuel Drain	*95-40	1	1	1	-	-
58	Strainer — Fuel Drain	*95-78	1	1	1	1	1
59	Plug — Bowl Drain	99-7	1	1	1	1	1
60	Lever Assy — Governor	155-583	-	-	-	1	-
61	Plug — Expansion, Bowl Drain	*179-35	1	1	1	-	-
62	Ball — Numbering Plate	206-36	1	1	1	-	1
63	Throttle Body & Shaft Assy	(See Basic Subassy)	1	1	1	1	1
64	Valve & Seat Assy — Float	233-536	1	1	1	-	1
		233-543	-	-	-	1	-

* Production previous to July, 1947 used part number 95-40 with part number 179-35. These parts are not replaced with part number 95-78 but are still supplied for service.

MARVEL - SCHEBLER PRODUCTS DIVISION

BORG-WARNER CORPORATION

MAIN OFFICE AND FACTORY
DECATUR, ILLINOIS, U. S. A.

June 24, 1960

SERVICE BULLETIN

#7-60

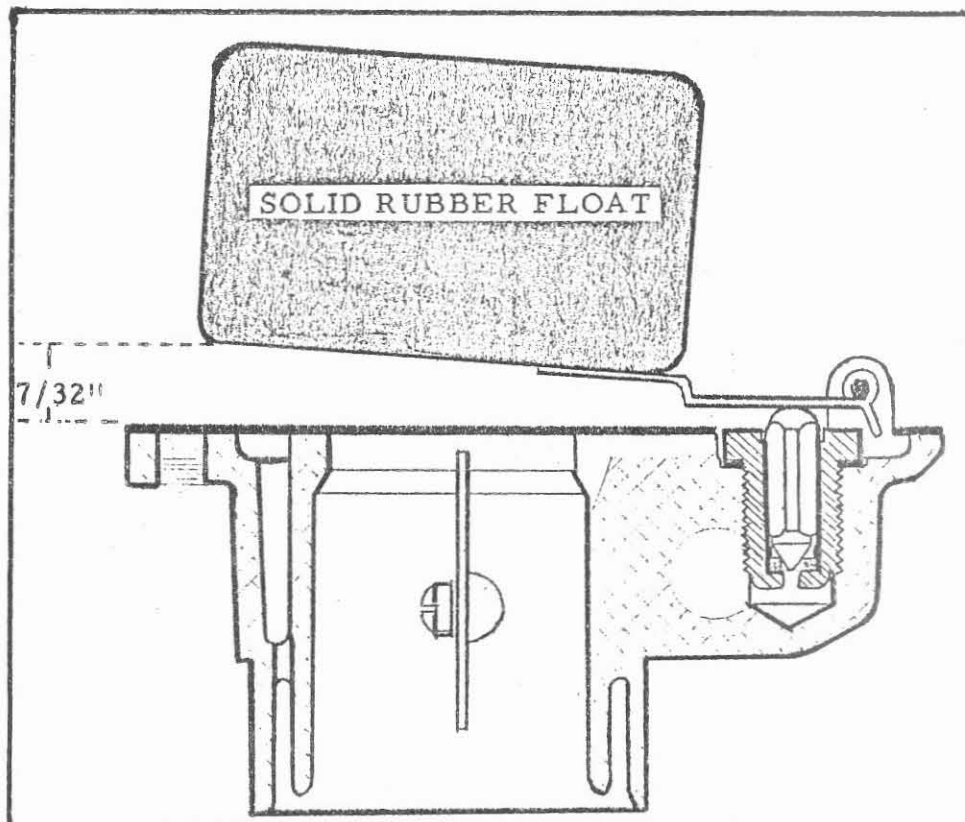
TO: All Outlets

SUBJECT: Model VD Float Change - EFFECTIVE IMMEDIATELY

All Model VD carbureters will be manufactured using the new rubber float part #30-725.

All service orders for the metal #30-662 float will be filled with the rubber model #30-725 float.

When replacing the metal with a rubber float, change the float setting as shown below.



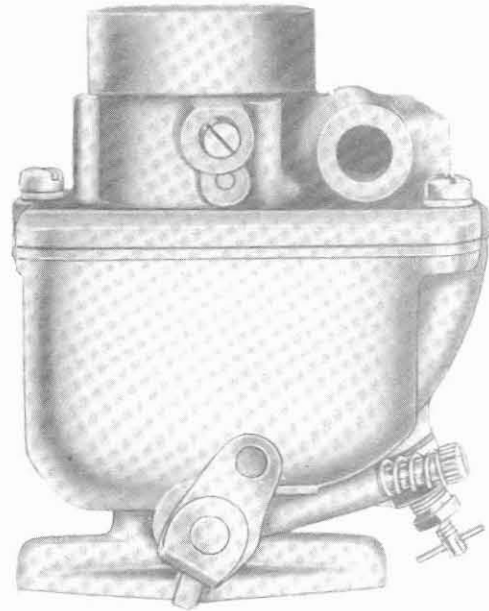
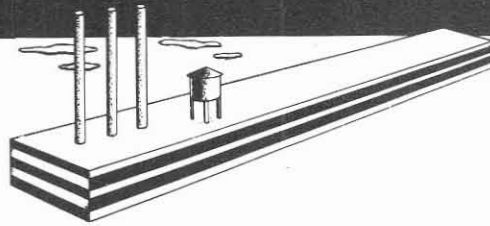
MARVEL - SCHEBLER PRODUCTS DIVISION

R. T. Massey
R. T. Massey
Service Sales Manager

SECTION II
D. W. ONAN ENGINES
VD SERIES

INDUSTRIAL

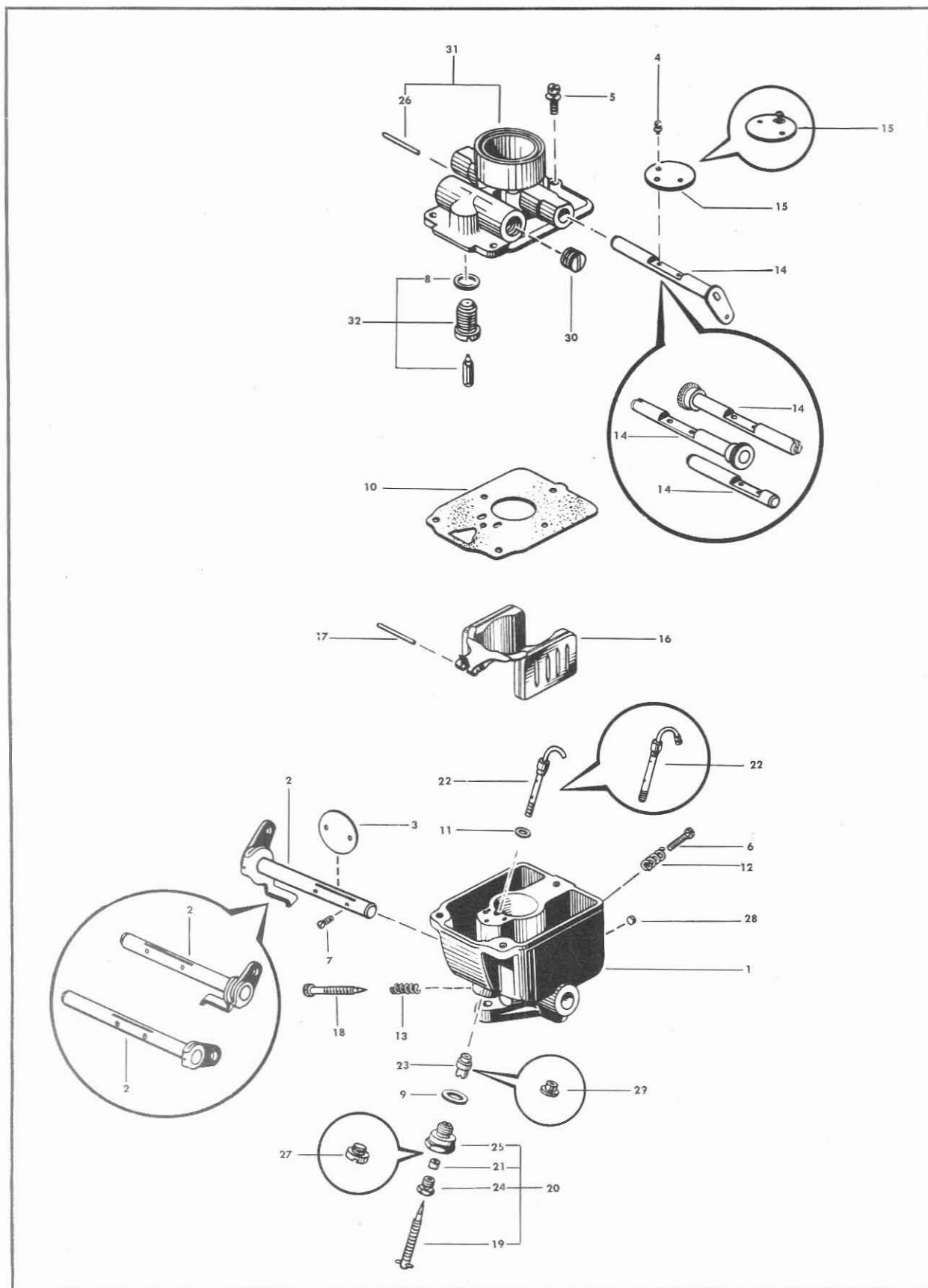
Carbureters



MARVEL-SCHEBLER PRODUCTS DIVISION,
BORG-WARNER CORPORATION
DECATUR, ILLINOIS, U. S. A.

ONAN — INDUSTRIAL

VD-10 to VD-42



Marvel-Schebler Products Division, Borg-Warner Corporation, Decatur, Illinois, U. S. A.

ONAN — INDUSTRIAL CARBURETERS

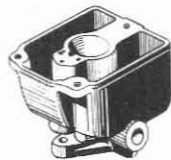
ISSUED JULY 1952

Model Application	Engine	Carbureter Number	Carbureter Part No.	Fuel	Superseded by	Customer Part No.	◆ Repair Kit No.	§ Gasket Kit No.	Float Valve & Seat Assy
OCT Series (with the following exceptions: OCT-5, -19, -29, -48, -59, -85)	OTC	VD-10	10-2550	Gasoline	19806	286-668	16-631	233-565
OCT-5, -29, -48, -59, -85	OTC	VD-11	10-2608	Gasoline	19807	286-668	16-631	233-565
3MTK (Marine)	MTK	VD-15	10-2664	Gasoline	142-51	286-668	16-631	233-565
3CK-M, 3CK-P, CK-S Series	CK (Hand Choke)	VD-26	10-2913	Gasoline	VD-41	142-C57	286-752	16-631	233-565
3CK-M, 3CK-P, CK-S Series	CK (Hand Choke)	VD-26A	10-3077	Gasoline	VD-41	142-C57	286-752	16-631	233-565
OCT-19	OTC	VD-27	10-2916	Gasoline	142-A12	286-668	16-631	233-565
3CK-R Series	CK (Automotive Choke)	VD-29	10-2934	Gasoline	VD-42	142-C68	286-759	16-631	233-565
3CK-R Series	CK (Automatic Choke)	VD-29A	10-3081	Gasoline	VD-42	142-C68	286-759	16-631	233-565
CK-MS/210 (U. S. Thermo), CK-MS/210, CK-MS/62, CK-MS/190	CK	VD-32	10-3018	Gasoline	VD-32A	142-C182	286-772	16-631	233-565
105BH-M, 105BH-P Series	CK	VD-32A	10-3252	Gasoline	42-C262	286-938	16-631	233-565
105BH-R Series, MKH (Marine)	BH (Hand Choke)	VD-33	10-3020	Gasoline	VD-33	142-C184	286-780	16-631	233-565
105BH-R Series, MKH (Marine)	BH (Automatic Choke)	VD-34	10-3027	Gasoline	VD-44	142-185	286-780	16-631	233-565
3CK-M, 3CK-P, CK-S Series	CK (Hand Choke)	VD-41	10-3258	Gasoline	142-C261	286-846	16-631	233-565
3CK-R Series	CK (Automatic Choke)	VD-42	10-3260	Gasoline	142-C260	286-846	16-631	233-565
BH (Manual Choke)	VD-43	10-3262	Gasoline	142-C263	286-846	16-631	233-565
BH (Automatic Choke)	VD-44	10-3261	Gasoline	142-C264	286-846	16-631	233-565

◆ The repair kit includes the throttle shaft, float valve and seat assembly, and the gasket kit.

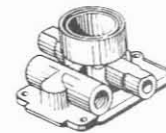
§ The flange gasket can be supplied separately. Specify the carbureter number when ordering.

BASIC SUBASSEMBLIES



CARBURETER BODY ASSY

Carbureter Number	Part Number
VD-10	10-2580
VD-11	10-2580
VD-15	10-2580
VD-26	10-2914
VD-26A	10-3078
VD-27	10-2580
VD-29	10-2914
VD-29A	10-3078
VD-32	10-3019
VD-32A	10-3253
VD-33	10-3028
VD-34	10-3029
VD-41	10-3259
VD-42	10-3259
VD-43	10-3263
VD-44	10-3263



CHOKE SLEEVE ASSY

Carbureter Number	Part Number
VD-10	102-571
VD-11	102-571
VD-15	102-571
VD-26	102-588
VD-26A	102-588
VD-27	102-571
VD-29	102-588
VD-29A	102-588
VD-32	102-588
VD-32A	102-588
VD-33	102-588
VD-34	102-588
VD-41	102-588
VD-42	102-588
VD-43	102-588
VD-44	102-588

ONAN — INDUSTRIAL

VD-10 to VD-44

ONAN			VD-10	VD-11	VD-15	VD-26	VD-26A	VD-27	VD-29	VD-29A	VD-32	VD-32A	VD-33	VD-34	VD-41	VD-42	VD-43	VD-44
Ref. No.	Part Name	Part No.																
1	Body Assy — Carbureter (See Basic Subassy)		1	1	1	1	1	1	1	1	1	1	1	1	1	1	1	1
2	Shaft, Stop, & Lever Assy — Throttle	13-861	1	1	1	-	-	1	-	-	-	-	-	-	-	-	-	-
		13-932	-	-	-	1	1	-	1	1	-	-	1	1	-	-	-	-
		13-959	-	-	-	-	-	-	-	-	1	-	-	-	-	-	-	-
	Shaft & Lever Assy — Throttle	13-1008	-	-	-	-	-	-	-	-	-	1	-	-	-	-	-	-
		13-1009	-	-	-	-	-	-	-	-	-	-	-	1	1	1	1	1
3	Valve — Throttle (15°)	14-207	1	1	1	1	1	1	1	1	1	1	1	1	1	1	1	1
4	Screw & Lock Washer Assy — Choke Valve (No. 4-40 x 3/16)	15-A47	2	2	2	2	2	2	2	2	2	2	2	2	2	2	2	2
5	Screw & Lock Washer Assy — Bowl Cover (No. 10-24 x 1/2)	15-A50	3	3	3	3	1	3	3	3	3	3	-	3	1	3	1	3
	(No. 10-24 x 5/8)	15-A86	-	-	-	-	2	-	-	-	-	-	3	-	2	-	2	-
6	Screw — Throttle Stop (No. 6-32 x 3/4)	15-A68	1	1	1	1	1	1	1	1	1	-	1	1	-	-	-	-
7	Screw — Throttle Valve (No. 4-40 x 1/4)	15-A102	2	2	2	2	2	2	2	2	2	2	2	2	2	2	2	2
8	Gasket — Float Valve Seat	16-4	1	1	1	1	1	1	1	1	1	1	1	1	1	1	1	1
9	Gasket — Power Adjusting Needle Retainer	16-4	†	1	1	1	1	-	1	1	-	-	1	1	1	1	1	1
	Gasket — Nozzle Plug	16-4	-	-	-	-	-	1	-	-	1	1	-	-	-	-	-	-
10	Gasket — Throttle Body to Bowl	16-A86	1	1	1	1	1	1	1	1	1	1	1	1	1	1	1	1
11	Gasket — Main Nozzle	16-A93	1	1	1	1	1	1	1	1	1	1	1	1	1	1	1	1
12	Spring — Throttle Stop Screw	24-A69	1	1	1	1	1	1	1	1	1	-	1	1	-	-	-	-
13	Spring — Idle Needle	24-A136	1	1	1	1	1	1	1	1	1	1	1	1	1	1	1	1
14	Shaft — Choke	26-291	-	-	-	-	-	-	-	-	1	1	-	-	-	-	-	-
		26-684	1	1	-	-	-	-	-	-	-	-	-	-	-	-	-	-
		26-714	-	-	-	1	1	-	-	-	-	-	1	1	-	1	-	-
	Shaft & Head Assy — Choke	26-713	-	-	1	-	-	1	-	-	-	-	-	-	-	-	-	-
		26-715	-	-	-	-	-	-	1	1	-	-	-	1	1	-	1	-
15	Valve — Choke	27-191	1	-	1	-	-	1	1	1	-	-	-	1	-	1	-	1
		27-209	-	-	-	-	-	-	-	-	1	1	-	-	-	-	-	-
	Valve Assy — Choke	27-555	-	1	-	1	1	-	-	-	-	-	1	-	1	-	1	-
16	Float & Lever Assy	30-662	1	1	1	1	1	1	1	1	1	1	1	1	1	1	1	1
17	Shaft — Float Lever	32-38	1	1	1	1	1	1	1	1	1	1	1	1	1	1	1	1
18	Needle — Idle	43-129	1	1	1	1	1	1	1	1	1	1	1	1	1	1	1	1
19	Needle Assy — Power Adjusting	43-596	1	1	1	1	1	-	1	1	-	-	1	1	1	1	1	1
20	Needle Assy — Power Adjusting (complete)	43-599	1	1	1	1	1	-	1	1	-	-	1	1	1	1	1	1
21	Packing — Power Adjusting Needle	44-51	1	1	1	1	1	-	1	1	-	-	1	1	1	1	1	1
22	Nozzle Assy — Main	47-671	-	-	-	-	-	-	-	-	1	-	-	-	-	-	-	-
		47-713	-	-	-	-	-	-	-	-	-	1	-	-	-	-	-	-
		47-714	-	-	-	1	-	-	1	-	-	-	1	1	1	1	1	1
		47-715	-	-	-	1	-	-	1	-	-	-	-	-	-	-	-	-
		47-716	1	1	1	-	-	1	-	-	-	-	-	-	-	-	-	-
23	Nut — Power Jet Nozzle Retainer	49-331	-	-	-	-	-	-	-	-	-	1	-	-	-	-	-	-
		49-332	-	-	-	1	1	-	1	1	-	-	1	1	1	1	1	1
		49-333	1	1	1	-	-	-	-	-	-	-	-	-	-	-	-	-
		49-338	-	-	-	-	-	1	-	-	-	-	-	-	-	-	-	-
24	Retainer — Power Adjusting Needle Packing	55-285	1	1	1	1	1	-	1	1	-	-	1	1	1	1	1	1
25	Retainer — Power Adjusting Needle	55-286	1	1	1	1	1	-	1	1	-	-	1	1	1	1	1	1
26	Pin — Choke Stop	71-37	1	1	1	1	1	1	1	1	1	1	1	1	1	1	1	1
27	Plug — Main Nozzle	80-93	-	-	-	-	-	1	-	-	1	1	-	-	-	-	-	-
28	Plug — Idle Drilling	80-167	-	-	-	1	1	-	1	1	1	1	1	1	1	1	1	1
29	Nut — Nozzle Retaining	81-146	-	-	-	-	-	-	-	-	1	-	-	-	-	-	-	-
30	Plug — Pipe (Fuel Inlet)	99-4	-	-	-	1	1	-	1	1	1	1	1	1	1	1	1	1
31	Sleeve Assy — Choke (See Basic Subassy)		1	1	1	1	1	1	1	1	1	1	1	1	1	1	1	1
32	Valve & Seat Assy — Float	233-565	1	1	1	1	1	1	1	1	1	1	1	1	1	1	1	1

TEMPORARY SERVICE PARTS LIST - INSERT IN THE PROPER SECTION OF YOUR MANUAL

D. W. Onan #142C383

VD-64

PART NO.	QUAN.	PART NAME
10-3901	1	Carbureter Body Assembly
13-1173	1	Throttle Shaft Assembly
14-219	1	Throttle Fly
15-A47	2	Screw (#4-40 x 3/16" Sems Fill. Head) (Choke Fly)
15-A50	1	Screw (#10-24 x 1/2 Sems Fill. Head) (Bowl Cover)
15-A86	2	Screw (10-24 x 5/8 Fill. Hd.(Bowl Cover)
15-A102	2	Screw (#4-40 x 1/4" French Head) (Throttle Fly)
16-4	2	Gasket (Float Valve Seat-1) (Main Adj. Needle Ret.-1)
16-A86	1	Gasket - Throttle Body to Bowl
16-A93	1	Gasket - Nozzle
16-631	1	Gasket Assortment
24-A136	1	Spring - Idle Needle
26-859	1	Choke Shaft Assembly
27-555	1	Choke Fly Assembly
30-662	1	Float & Lever Assembly
32-38	1	Shaft - Float
43-129	1	Needle - Idle
43-596	1	Needle Assembly - Main Adjusting
43-599	1	Main Adjusting Needle, Packing, Nut & Retainer Assembly
44-51	1	Packing - Main Adjusting Needle
47-714	1	Nozzle Assembly
49-334	1	Power Jet & Nozzle Retaining Nut
55-285	1	Retainer - Main Adjusting Needle Packing
55-286	1	Retainer - Main Adjusting Needle
60-439	2	Bushing - Throttle Shaft (Service)
80-167	1	Plug - Idle Drilling
99-4	1	Plug - 1/8" Pipe (Gas Inlet Boss)
102-588	1	Choke Sleeve Assembly
233-543	1	Matched Float Valve, Seat & Gasket Assembly
286-1232		Repair Kit

TEMPORARY SERVICE PARTS LIST - INSERT IN THE PROPER SECTION OF YOUR MANUAL

D. W. Onan #142C415

VD-65

PART NO.	QUAN.	PART NAME
10-4499	1	Carbureter Body Assembly
13-1173	1	Throttle Shaft Assembly
14-219	1	Throttle Fly
15-A47	2	Screw - (#4-40 x 3/16) Pan Head "Sems" (Choke Fly)
15-A86	3	Screw - (10-24 x 5/8) Fill. Head "Sems" (Bowl Cover)
15-A102	2	Screw - (#4-40 x 1/4) Oval Head (Throttle Fly)
16-4	2	Gasket - Float Valve Seat (1) Main Adjusting Needle Ret. (1)
16-A86	1	Gasket - Throttle Body to Bowl
16-A93	1	Gasket - Nozzle
16-631	1	Gasket Assortment
24-A136	1	Spring - Idle Needle
26-859	1	Choke Shaft Assembly
27-555	1	Choke Fly Assembly
30-725	1	Float & Lever Assembly
32-38	1	Shaft - Float
43-129	1	Needle - Idle
43-596	1	Needle Assembly - Main Adjusting
43-599	1	Main Adjusting Needle, Pack, Nut & Retainer Assembly
44-51	1	Packing - Main Adjusting Needle
47-714	1	Nozzle Assembly
49-334	1	Power Jet & Nozzle Retaining Nut
55-285	1	Retainer - Main Adjusting Needle Packing
55-286	1	Retainer - Main Adjusting Needle
60-439	2	Bushing - Throttle Shaft
71-37	1	Pin - Choke Stop
80-167	1	Plug - Idle Drilling
99-4	1	Plug - 1/8 Pipe (Gas Inlet Boss)
102-588	1	Choke Sleeve Assembly
233-565	1	Matched Float Valve, Seat & Gasket Assembly
286-1399		Repair Kit

