

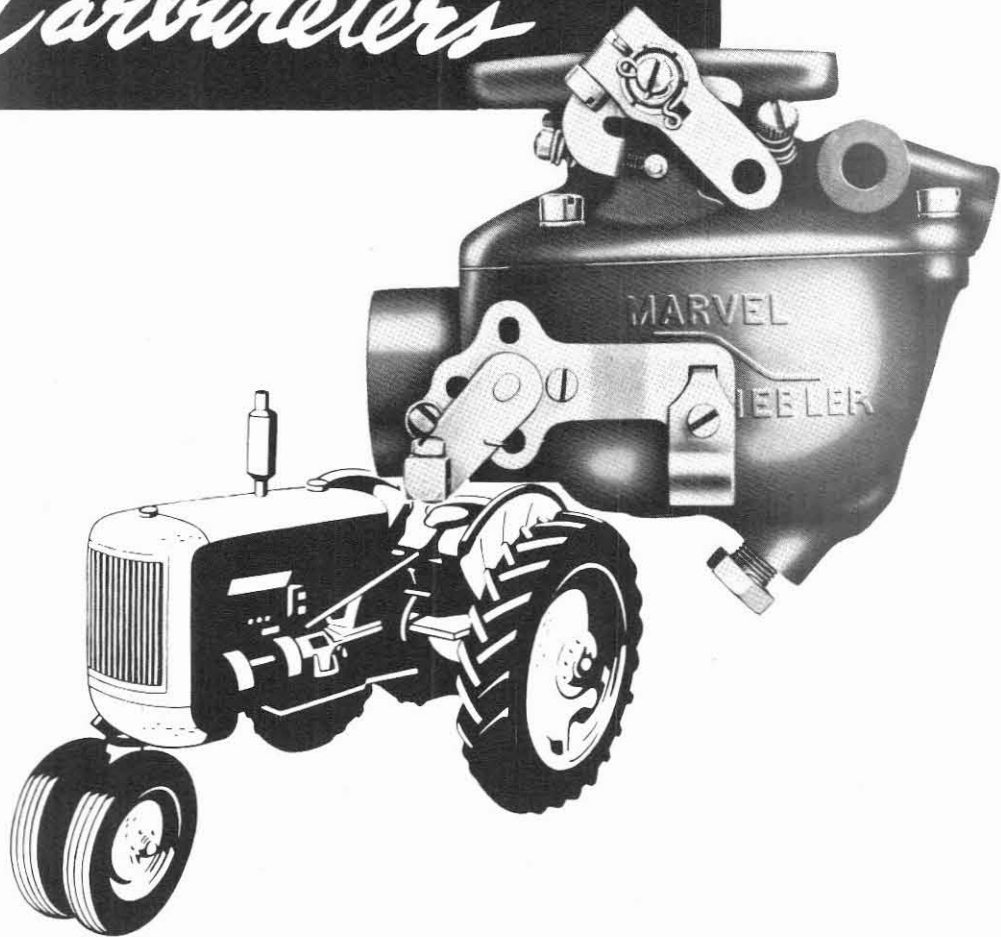
SECTION III

MINNEAPOLIS-MOLINE

TSX SERIES

# TRACTOR

*Carbureters*



**MARVEL-SCHEBLER PRODUCTS DIVISION,**  
BORG-WARNER CORPORATION  
DECATUR, ILLINOIS, U. S. A.

# Warranty

Marvel-Schebler Products Division, Borg-Warner Corporation, warrant its carbureters against defects in material and workmanship for a period of ninety days. Defective merchandise will be replaced without charge but labor charges incurred in the removal, disassembly or reinstallation of such products will not be allowed. No merchandise can be returned without written permission from the factory, transportation charges must be prepaid. The factory shall be the sole judge of defects in products returned.

A ten per cent handling charge will be made for all merchandise returned that is not defective. All prices are subject to change without notice, and we reserve the right to limit quantities and to make partial shipments unless specifically instructed otherwise. The obligation of the company under this warranty is limited to replacing at the factory, any complete units or parts thereof which shall be returned and which our examination shall disclose to have been defective.

## *Introduction...*

This section of the master manual is an individual parts catalog of all service parts for Marvel-Schebler carbureters listed on the identification charts. The catalog is divided into groups of carbureters; each group containing an identification chart, an exploded drawing of a composite carbureter, and a parts list. Each part in the illustration bears a reference number which keys together the illustration and parts list.

NOTE: The illustration does not represent any specific carbureter within a series, but is typical of all of them. All parts that look different are shown adjacent to the part of the basic carbureter that they replace.

### TO USE THE CATALOG

- (1) Locate the group which contains the carbureter in question by referring to the identification charts.
- (2) Visually locate the part desired in the exploded drawing and note its reference number.
- (3) Turn to the parts list opposite the reference number of the part for its complete part name and part number.

# MINNEAPOLIS-MOLINE — TRACTOR CARBURETERS

ISSUED MARCH 1953

Model Application	Engine	Carbureter Number	Fuel	Superseded by	Customer Part No.	◆Repair Kit No.	§Gasket Kit No.	Float Valve & Seat Assy
RT .....	EE	‡TSX-30	Gasoline	.....	EE-733	286-616	16-592	233-536
RT .....	EE	TSX-36	Gasoline	.....	EE-733A	286-620	16-592	233-536
UT & H .....	KEF XE817	TSX-67	Gasoline	.....	KE-817P	**286-922	16-594	233-543
GTA, GTB .....	LE	TSX-68	Gasoline	.....	LE-806	286-618	16-594	233-543
ZA, ZT, G4 .....	206B-4 RE, REC	TSX-97	Gasoline	.....	RE-733C	**286-921	16-654	233-543
EE .....	EE	TSX-231	Gasoline	.....	10A1329	**286-919	16-592	233-536
KT & MT Tractors .....		TSX-360	Gasoline	.....	10A524	286-895	16-654	233-543
B.F. Avery Div. Tractor ...	Hercules IXB-3	TSX-400	Gasoline	.....	135119	286-946	16-590	233-536
B.F. Avery Div. Tractor ...	Hercules IXB-3	TSX-421	Gasoline	.....	120320	286-685	16-597	233-536
R .....		TSX-497	Gasoline	.....	10A2944	286-977	16-592	233-536

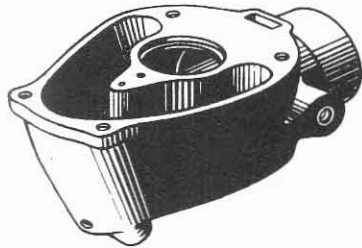
◆The repair kit includes the throttle shaft, float valve and seat assembly, and the gasket kit.

\*\*Repair kits so indicated are supplied without gasket assortments.

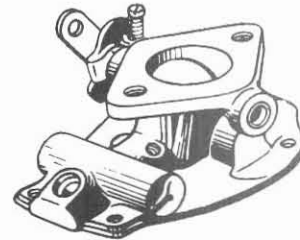
§The flange gasket can be supplied separately. Specify the carbureter number when ordering.

‡ A choke assembly to convert carbureter TSX-30 to the Bowden wire control type for electrical starting is available. The assembly consists of all required parts and can be obtained by specifying part number 26-638.

## BASIC SUBASSEMBLIES



CARBURETER BODY ASSEMBLY



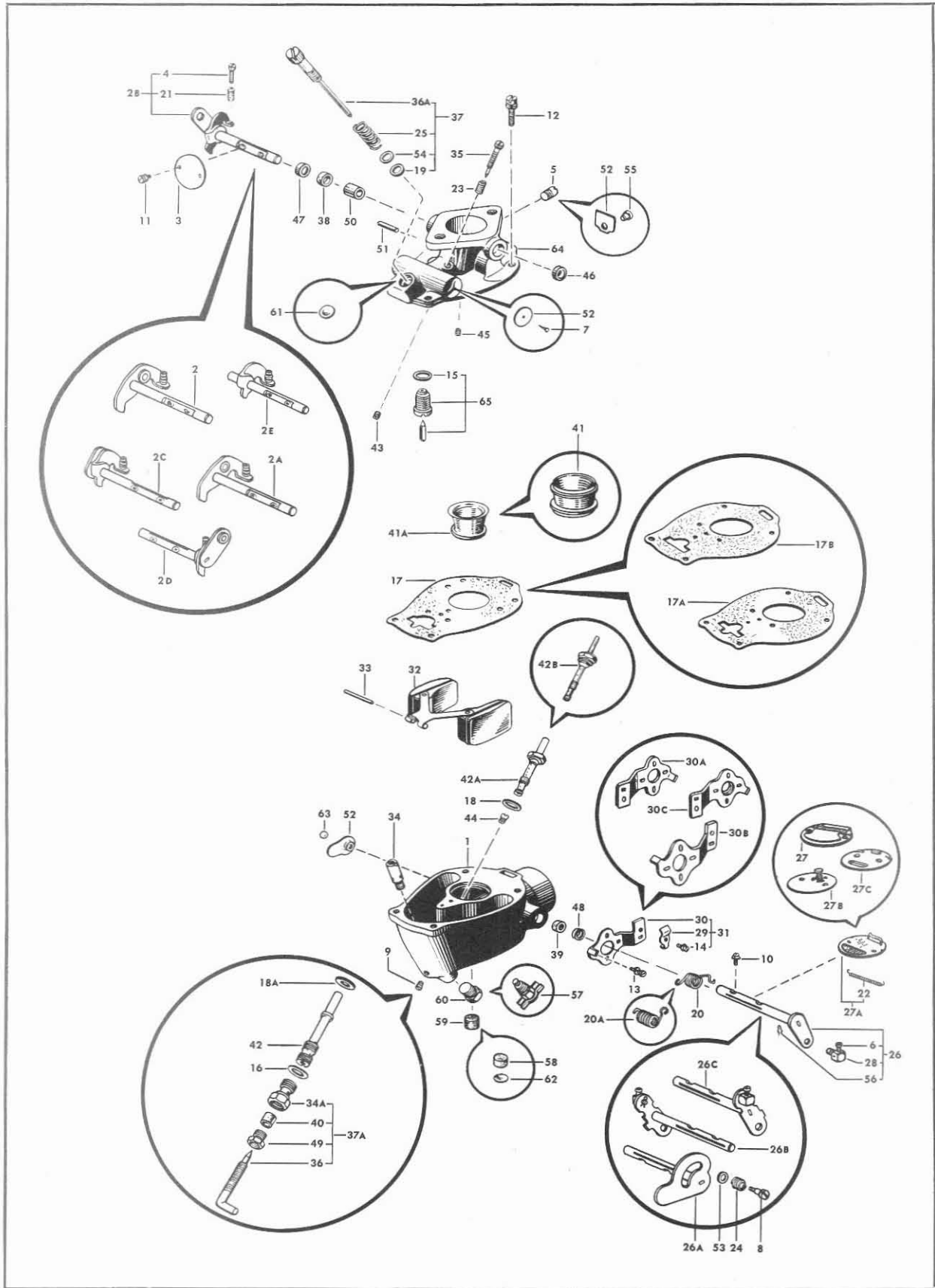
THROTTLE BODY & SHAFT ASSEMBLY

Carbureter Number	Marvel-Schebler Part Number	Minn.-Moline Part Number
TSX-30	10-1962	
TSX-36	10-2026	EE-9501A
TSX-67	10-2170	LE-7001
TSX-68	10-2170	LE-7001
TSX-97	10-3083	10-P66
TSX-231	10-3315	10-P73
TSX-360	10-3083	10-P66
TSX-400	10-3408	
TSX-421	10-3406	
TSX-497	10-3557	

Carbureter Number	Marvel-Schebler Part Number	Minn.-Moline Part Number
TSX-30	227-624	EE-9502
TSX-36	227-624	EE-9502
TSX-67	227-726	
TSX-68	227-728	LE-7000
TSX-97	227-1099	RE-9509
TSX-231	227-1185	10-P80
TSX-360	227-1159	10-P71
TSX-400	227-1194	
TSX-421	227-1177	
TSX-497	227-1185	10-P80

Ref. No.	Part Name	Marvel-Schebler Part Number	Minn.-Moline Part Number	TSX-30	TSX-36	TSX-67	TSX-68	TSX-97	TSX-231	TSX-360	TSX-400	TSX-421	TSX-497
1	Body Assy — Carbureter .....	(See Basic Subassembly)		1	1	1	1	1	1	1	1	1	1
2	Shaft & Lever Assy — Throttle .....	13-729	EE-9503	1	1	-	-	-	1	-	-	-	1
2A	Shaft & Lever Assy — Throttle .....	13-969	RE-9038	-	-	-	-	1	-	-	-	-	-
2B	Shaft, Stop & Lever Assy — Throttle .....	13-783		-	-	-	-	-	-	-	1	1	-
2C	Shaft, Stop & Lever Assy — Throttle .....	13-807	KE-7003	-	-	-	1	-	-	-	-	-	-
2D	Shaft, Stop & Lever Assy — Throttle .....	13-808	KE-7317	-	-	1	-	-	-	-	-	-	-
2E	Stop & Shaft Assy — Throttle .....	13-1003	10-P67	-	-	-	-	-	-	1	-	-	-

**MINNEAPOLIS-MOLINE — TRACTOR**  
 TSX-30 to TSX-497



Marvel-Schebler Products Division, Borg-Warner Corporation, Decatur, Illinois, U. S. A.

MINNEAPOLIS-MOLINE — TRACTOR  
TSX-30 to TSX-497

Ref. No.	Part Name	Marvel-Schebler Part Number	Minn.-Moline Part Number	TSX-30	TSX-36	TSX-67	TSX-68	TSX-97	TSX-231	TSX-360	TSX-400	TSX-421	TSX-497
3	Valve — Throttle (23°)	14-139	RE-7103	-	-	-	-	1	-	1	-	-	-
	(22°)	14-163	LE-7006	-	-	1	1	-	-	-	-	-	-
	(20°)	14-169		-	-	-	-	-	-	-	1	1	-
	(15°)	14-175	EE-9504	1	1	-	-	-	1	-	-	-	1
4	Screw — Throttle Stop (No. 8-32 x 3/4)	15-42	RE-7133	-	-	1	1	1	-	1	1	1	-
	(No. 8-32 x 5/8)	15-118	RE-7133	1	1	-	-	-	1	-	-	-	1
5	Screw — Idle Drilling (Headless, 5/16-24)	15-274	LE-7035	-	-	1	1	-	-	-	-	-	-
6	Screw — Choke Swivel (No. 8-32 x 5/16)	15-285	EE-9539	-	1	1	1	1	1	1	1	1	1
7	Screw — Drive, Numbering Plate (No. 2 x 1/4)	15-343		-	-	1	1	-	-	-	-	-	-
8	Screw — Choke Friction Lever	15-397	EE-9517	1	-	-	-	-	-	-	-	-	-
9	Screw — Drill Plug, Nozzle Hole (No. 8-32)	15-409	RE-7134	1	1	-	-	-	-	-	1	1	1
10	Screw & Lock Washer Assy — Choke Valve												
	(No. 6-32 x 1/4)	15-483	LE-7019	-	-	2	2	2	-	2	-	-	-
	(No. 4-40 x 1/4)	15-A91	EE-9505	2	2	-	-	-	2	-	2	2	2
11	Screw & Lock Washer Assy — Throttle Valve												
	(No. 6-32 x 1/4)	15-483	LE-7019	-	-	-	-	2	-	2	-	-	-
	(No. 6-32 x 5/16)	15-A64	9052-S	-	-	2	2	-	-	-	-	-	-
	(No. 4-40 x 1/4)	15-A91	EE-9505	2	2	-	-	-	2	-	2	2	2
12	Screw & Lock Washer Assy — Throttle												
	Body to Bowl (No. 12-24 x 5/8)	15-A82	GM-100674	4	4	-	-	-	4	-	4	4	4
	(No. 12-24 x 3/4)	15-A85	GM-100675	-	-	4	4	4	-	4	-	-	-
13	Screw & Lock Washer Assy — Choke												
	Bracket to Body (No. 8-32 x 3/8)	15-A93	RE-7132	-	1	2	2	1	1	1	1	1	1
14	Screw & Lock Washer Assy — Choke												
	Bracket (No. 8-32 x 5/16)	15-A99		-	1	1	1	1	1	1	-	-	1
15	Gasket — Float Valve Seat	16-4	RE-7124	1	1	1	1	1	1	1	1	1	1
16	Gasket — Power Adj. Needle Seat & Bowl Plug	16-47	10-P68	-	-	-	-	1	-	1	-	-	-
17	Gasket — Throttle Body to Bowl	16-80	EE-9537	1	1	-	-	-	1	-	1	1	1
17A	Gasket — Throttle Body to Bowl	16-A12	LE-7002	-	-	1	1	-	-	-	-	-	-
17B	Gasket — Throttle Body to Bowl	16-A41	RE-9039	-	-	-	-	1	-	1	-	-	-
18	Gasket — Main Nozzle	16-449	EE-9538	1	1	-	-	-	1	-	1	1	1
18A	Gasket — Main Nozzle	16-456	RE-7129	-	-	-	-	1	-	1	-	-	-
18	Gasket — Main Nozzle	16-492	LE-7034	-	-	1	1	-	-	-	-	-	-
19	Gasket — Power Adjusting Needle	16-491	LE-7028	1	1	1	1	-	1	-	1	1	1
20	Spring — Choke Return	24-153	EE-9540	-	1	-	-	-	1	-	1	-	1
20A	Spring — Choke Return	24-247		-	-	-	-	-	-	-	-	1	-
20	Spring — Choke Return	24-A3	LE-7016	-	-	1	1	1	-	1	-	-	-
21	Spring — Throttle Stop Screw	24-262	RE-7118	1	1	1	1	1	1	1	1	1	1
22	Spring — Choke Valve Flapper	24-292	LE-7024	-	-	1	1	-	-	-	-	-	-
		24-425	EE-9520	1	1	-	-	-	1	-	1	1	1
		24-340	EE-9527	1	1	1	1	1	1	1	1	1	1
23	Spring — Idle Needle	24-480		1	-	-	-	1	-	-	-	-	-
24	Spring — Choke Friction Lever	24-480											
25	Spring — Power Adjusting Needle	24-A1	LE-9004	1	1	1	1	-	1	-	1	1	1
26	Shaft & Lever Assy — Choke	26-627	EE-9541	-	1	-	-	-	1	-	-	-	1
26A	Shaft & Lever Assy — Choke	26-631	EE-9514	1	-	-	-	-	-	-	-	-	-
26	Shaft & Lever Assy — Choke	26-653	LE-7015	-	-	1	1	-	-	-	-	-	-
26	Shaft & Lever Assy — Choke	26-666	RE-9042	-	-	-	-	1	-	1	-	-	-
26B	Shaft & Lever Assy — Choke	26-757		-	-	-	-	-	-	-	-	1	-
26C	Shaft & Lever Assy — Choke	26-769		-	-	-	-	-	-	-	1	-	-
27	Valve Assy — Choke	27-530	B-9515	1	-	-	-	-	-	-	-	-	-
27A	Valve Assy — Choke	27-539	10-P75	-	1	-	-	-	1	-	1	1	1
27B	Valve Assy — Choke	27-540	RE-9044	-	-	-	-	1	-	1	-	-	-
27C	Valve Assy — Choke	27-548	LE-7017	-	-	1	1	-	-	-	-	-	-
28	Swivel — Choke Lever	28-49	9054-S	1	-	1	1	1	1	1	1	1	1

† For high altitude adjustment on model TSX-400 only.

Gasket Set for TSX 97 in 16-654

**MINNEAPOLIS-MOLINE — TRACTOR**  
 TSX-30 to TSX-497

Ref. No.	Part Name	Marvel-Schebler Part Number	Minn.-Moline Part Number	TSX-30	TSX-36	TSX-67	TSX-68	TSX-97	TSX-231	TSX-360	TSX-400	TSX-421	TSX-497	
29	Clip—Choke Bracket	29-81		—	1	1	1	1	1	1	1	1	1	
30	Bracket—Choke	29-86		—	1	—	—	—	1	—	—	—	—	
30A	Bracket—Choke	29-93		—	—	1	1	—	—	—	—	—	—	
30B	Bracket—Choke	29-104		—	—	—	—	—	—	—	—	1	—	
30C	Bracket—Choke	29-123		—	—	—	—	1	—	1	—	—	—	
31	Bracket Assy—Choke	29-520	EE-9542	—	1	—	—	—	1	—	1	—	1	
		29-524	LE-7020	—	—	1	1	—	—	—	—	—	—	
		29-528		—	—	—	—	—	—	—	—	—	1	—
		29-538	RE-9045	—	—	—	—	1	—	1	—	—	—	—
32	Float & Lever Assy	30-600	EE-9512	1	1	—	—	—	1	—	1	1	1	
		30-621	LE-7012	—	—	1	1	—	—	—	—	—	—	
		30-631	RE-9046	—	—	—	—	1	—	1	—	—	—	
33	Shaft—Float Lever	32-16	RE-7017	—	—	1	1	1	—	1	—	—	—	
		32-27	EE-9513	1	1	—	—	—	1	—	1	1	1	
34	Seat—Power Adjusting Needle	36-229	LE-7027	—	—	—	1	—	—	—	—	—	—	
34	Seat—Power Adjusting Needle	36-233	KE-7318	—	—	1	—	—	—	—	—	—	—	
34A	Seat—Power Adjusting Needle	36-293	10-P69	—	—	—	—	1	—	1	—	—	—	
35	Needle—Idle Adjusting	43-33	EE-9526	1	1	—	—	1	1	1	1	1	1	
		43-58	LE-7030	—	—	1	1	—	—	—	—	—	—	
36	Needle—Power Adjusting	43-134	RE-9050	—	—	—	—	1	—	1	—	—	—	
36A	Needle Assy—Power Adjusting	43-627	10-P77	1	1	—	—	—	1	—	1	1	1	
36A	Needle Assy—Power Adjusting	43-631	LE-7026A	—	—	1	1	—	—	—	—	—	—	
		43-619		1	1	—	—	—	1	—	1	1	1	
37	Needle Assy—Power Adjusting (complete)	43-620		—	—	1	1	—	—	—	—	—	—	
37A	Needle, Seat, Packing & Retainer Assy—Power Adjusting	43-622	10-P70	—	—	—	—	1	—	1	—	—	—	
38	Packing—Throttle Shaft	44-27	RE-739	—	—	—	—	1	—	1	—	—	—	
		44-35	LE-7009	—	—	1	1	—	—	—	—	—	—	
		44-38	EE-9506	1	1	—	—	—	1	—	1	1	1	
39	Packing—Choke Shaft	44-38	EE-9506	—	—	1	1	1	—	1	—	—	—	
		44-39	EE-9521	1	1	—	—	—	1	—	1	1	1	
40	Packing—Power Adjusting Needle	44-51	RE-9502	—	—	—	—	1	—	1	—	—		
41	Venturi (5/8" Diameter Throat)	46-448	EE-9528	1	1	—	—	—	1	—	—	—		
41A	Venturi (25/32" Diameter Throat)	46-457		—	—	—	—	—	—	—	—	—	1	
41A	Venturi (21/32" Diameter Throat)	46-473		—	—	—	—	—	—	—	—	—	1	
41A	Venturi (23/32" Diameter Throat)	46-476		—	—	—	—	—	—	—	—	—	1	
41A	Venturi (1-1/6" Diameter Throat)	46-490	LE-7031	—	—	—	1	—	—	—	—	—	—	
41A	Venturi (15/16" Diameter Throat)	46-495	KE-7319	—	—	1	—	—	—	—	—	—	—	
41A	Venturi (27/32" Diameter Throat)	46-A50	RE-9053	—	—	—	—	1	—	1	—	—	—	
42	Nozzle—Main	47-220	RE-9054	—	—	—	—	1	—	1	—	—	—	
42A	Nozzle—Main	47-221	LE-7032	—	—	1	1	—	—	—	—	—	—	
42A	Nozzle—Main	47-257		—	—	—	—	—	—	—	1	—	—	
42B	Nozzle Assy—Main	47-594	EE-9529	1	1	—	—	—	—	—	—	—	—	
42B	Nozzle Assy—Main	47-633		—	—	—	—	—	—	—	—	—	1	
42B	Nozzle Assy—Main	47-710	10-P78	—	—	—	—	—	1	—	—	—	1	
43	Jet—Idle	49-101-L	EE-9530	1	1	1	1	—	1	—	1	1	1	
		49-165	9056-S	—	—	—	—	1	—	1	—	—	—	
44	Jet—Power	49-159	EE-9531	1	1	—	—	—	—	—	—	—	—	
		49-178		—	—	—	—	—	—	—	—	—	—	
		49-198	10-P79	—	—	—	—	—	1	—	—	—	—	
		49-208		—	—	—	—	—	—	—	—	1	—	
		49-261		—	—	—	—	—	—	—	—	—	—	1
45	Jet—Economizer	49-219	LE-7033	—	—	1	1	—	—	—	—	—	—	
		49-262		—	—	—	—	—	—	—	1	—	—	

† For high altitude adjustment on model TSX-400 only.



MINNEAPOLIS-MOLINE — TRACTOR  
TSX-30 to TSX-497

Ref. No.	Part Name	Marvel-Schebler Part Number	Minn.-Moline Part Number	TSX-30	TSX-36	TSX-67	TSX-68	TSX-97	TSX-231	TSX-360	TSX-400	TSX-421	TSX-497
46	Cup — Throttle Shaft	55-214	LE-7005	—	—	1	1	—	—	—	—	—	—
		55-230	EE-9536	1	1	—	—	—	1	—	1	1	1
47	Retainer — Throttle Shaft Packing	55-216	LE-7010	—	—	1	1	—	—	—	—	—	—
		55-231	EE-9507	1	1	—	—	—	1	—	1	1	1
		55-261	RE-9055	—	—	—	—	1	—	2	—	—	—
48	Retainer — Choke Shaft Packing	55-243	EE-9543	—	1	—	—	—	1	—	1	1	1
49	Retainer — Power Adjusting Needle Packing	55-285	RE-9056	—	—	—	—	1	—	1	—	—	—
50	Bushing — Throttle Shaft	60-260	LE-7004	—	—	1	1	—	—	—	—	—	—
51	Pin — Throttle Stop	62-167	EE-9535	1	1	1	1	—	1	—	1	1	1
52	Plate — Numbering	(Specify TSX Number)		1	1	1	1	1	1	1	1	1	1
53	Washer — Choke Friction Lever	78-184	EE-9518	1	—	—	—	—	—	—	—	—	—
54	Washer — Flat, Power Adjusting Needle	†78-299	EE-9523	1	1	1	1	—	1	—	1	1	1
55	Plug — Idle Drilling	80-171		1	1	—	—	1	1	1	1	1	1
56	Cotter — Hairpin (Choke Swivel)	82-16	9068-S	—	1	1	1	1	1	1	1	1	1
57	Cock — Drain	87-3	RE-7116	—	—	—	1	—	—	—	—	—	—
		87-3A	RE-9508	—	—	1	—	1	—	1	—	1	—
58	Strainer — Fuel Drain	*95-40	EE-9532	1	1	1	1	1	—	1	—	—	—
59	Strainer — Fuel Drain	*95-78		1	1	1	1	1	—	1	—	—	—
60	Plug — Bowl Drain	99-7	9061-S	1	1	—	—	—	1	—	1	—	1
61	Plug — Expansion	179-11		—	—	—	—	—	—	—	1	—	—
62	Plug — Expansion, Bowl Drain	*179-35	EE-9534	1	1	1	1	1	—	1	—	—	—
63	Ball — Numbering Plate	206-36		1	1	—	—	—	1	—	1	1	1
64	Body & Shaft Assy — Throttle	(See Basic Subassembly)		1	1	1	1	1	1	1	1	1	1
65	Valve & Seat Assy — Float	233-536	EE-9511	1	1	—	—	—	1	—	1	1	1
		233-543	RE-7140A	—	—	1	1	1	—	1	—	—	—

† For high altitude adjustment on model TSX-400 only.

\* Production previous to July, 1947 used part number 95-40 with part number 179-35. These parts are not replaced with part number 95-78 but are still supplied for service.





TEMPORARY SERVICE PARTS LIST - INSERT IN THE PROPER SECTION OF YOUR MANUAL

G B Tractor		Minneapolis-Moline	TSX-740
PART NO.	QUAN.	PART NAME	
10-4339	1	Carbureter Body Assembly	
13-1217	1	Throttle Shaft & Lever Assembly	
14-163	1	Throttle - Fly (22°) 3/64 Offset	
15-42	1	Screw (#8-32 X 3/4 Fill. Head) (Throttle Adjusting)	
15-274	1	Screw (5/16-24 Headless Plug)	
15-285	1	Screw (#8-32 X 5/16 Fill. Head) (Choke Swivel-1)	
15-483	2	Screw (#6-32 X 1/4 Fill. Head Sems) (Choke Fly-2)	
15-A64	2	Screw (#6-32 X 5/16 Fill. Head Sems) (Throttle Fly)	
15-A85	4	Screw (#12-24 X 3/4 Fill. Head Sems) (Throttle Body to Bowl)	
15-A93	2	Screw (#8-32 X 3/8 Fill. Head Sems) (Choke Bracket)	
15-A270	1	Screw (#8-32 X 5/16 Hex. Head Sems) (Choke Bracket Clip)	
16-4	1	Gasket - Float Valve Seat	
16-491	1	Gasket - Main Adjusting Needle	
16-492	1	Gasket - Nozzle	
16-A12	1	Gasket - Throttle Body to Bowl	
24-262	1	Spring - Throttle Stop Screw	
24-292	1	Spring - Choke Fly Flapper	
24-340	1	Spring - Idle Needle	
24-A1	1	Spring - Main Adjusting Needle Packing	
24-A3	1	Spring - Choke Return	
24-A167	1	Spring - Throttle Stop	
26-653	1	Choke Shaft & Lever Assembly	
27-548	1	Choke Fly Assembly	
28-49	1	Swivel - Choke	
29-81	1	Clip - Choke Bracket	
29-123	1	Bracket - Choke	
29-551	1	Choke Bracket & Clip Assembly	
30-621	1	Float & Lever Assembly	
32-16	1	Shaft - Float	
36-229	1	Seat - Main Adjusting Needle	
43-58	1	Needle - Idle Adjusting	
43-620	1	Main Adj. Needle Assembly Complete	
43-631	1	Main Adjusting Needle Assembly	
44-65	1	Packing - Throttle Shaft	
44-38	1	Packing - Choke Shaft	
46-490	1	Venturi (1-1/16 Throat)	
47-221	1	Nozzle	
49-101-L	1	Jet - Idle	
49-219	1	Jet - Economizer	
55-214	1	Cup - Throttle Shaft	
55-216	1	Retainer - Throttle Shaft Packing	
78-299	1	Washer - Main Gas. Adjusting	
82-16	1	Cotter - Choke Swivel	
99-21	1	Pipe Plug (1/8 Headless)	
227-1661	1	Throttle Body & Bowl Cover	
233-595	1	Float Valve, Seat & Gasket Assembly Matched	
16-594	1	Gasket Assembly	
60-260	2	Bushing - Throttle Shaft	
286-1283	1	Repair Kit	



TEMPORARY SERVICE PARTS LIST - INSERT IN THE PROPER SECTION OF YOUR MANUAL

Model 445 Tractor

Minneapolis-Moline #10-A15430

TSX-797

PART NO.	QUAN.	PART NAME
10-3885	1	Carbureter Body Assembly
13-1301	1	Throttle Shaft Assembly
14-225	1	Fly - Throttle (15°)
15-108	1	Screw (#8-32 x 5/16) Slot Hex Hd. (Choke Swivel)
15-118	1	Screw (#8-32 x 5/8) Fillister Head (Throttle Adjusting)
15-483	4	Screw (#6-32 x 1/4) SEMS Binding Head (Choke Fly-2) (Thr. Fly-2)
15-A85	4	Screw (#12-24 x 3/4) SEMS Fill. Hd. (Thr. Body to Bowl)
15-A93	1	Screw (#8-32 x 3/8) SEMS Pan Head (Choke Bracket)
15-A270	1	Screw (#8-32 x 5/16) SEMS Slot. Hex Hd. (Choke Bkt. Clip)
16-4	1	Gasket - Float Valve Seat
16-47	1	Gasket - Main Adj. Needle Seat & Bowl Plug
16-456	1	Gasket - Nozzle
16-654	1	Gasket Assortment
16-A41	1	Gasket - Throttle Body to Bowl
24-262	1	Spring - Throttle Stop Screw
24-340	1	Spring - Idle Needle
24-A3	1	Spring - Choke Return
24-A446	1	Spring - Throttle Stop
26-836	1	Choke Shaft Assembly
27-540	1	Choke Fly Assembly
28-49	1	Swivel - Choke
29-81	1	Clip - Choke Bracket
29-123	1	Bracket - Choke
29-551	1	Choke Bracket Assembly
30-739	1	Float & Lever Assembly
32-16	1	Shaft - Float
36-348	1	Main Adjusting Needle Seat & Bowl Plug
43-33	1	Needle - Idle Adjusting
43-678	1	Main Adj. Needle, Seat, Packing & Packing Ret. Assembly
44-38	1	Packing - Choke Shaft
44-51	1	Packing - Main Adjusting Needle
44-68	1	Packing - Throttle Shaft
46-A11	1	Venturi (7/8 Throat)
47-449	1	Main Nozzle
49-101-L	1	Idle Jet
49-364	1	Power Jet
55-230	1	Cup - Choke Shaft Plug
55-261	1	Retainer - Throttle Shaft Packing
55-285	1	Retainer - Main Adj. Needle Packing
55-358	1	Cup - Throttle Shaft Hole Plug
80-171	1	Drill Plug (Name Plate)
82-16	1	Cotter - Choke Swivel
99-21	1	Drain Plug
227-1687	1	Throttle Body Assembly
233-543	1	Float Valve Seat & Gasket Assembly, Matched
286-1309		Repair Kit



TEMPORARY SERVICE PARTS LIST - INSERT IN THE PROPER SECTION OF YOUR MANUAL

Minneapolis-Moline 10A15562

TSX-814

PART NO.	QUAN.	PART NAME
10-3885	1	Carbureter Body Assembly
13-1159	1	Throttle Shaft Assembly
14-225	1	Fly - Throttle (15°)
15-118	1	Screw (#8-32 x 5/8) Fill. Head (Throttle Adj.)
15-285	1	Screw (#8-32 x 5/16) Slotted Hex. Hd. (Choke Swivel-1)
15-483	4	Screw (#6-32 x 1/4) Binding Hd. SEMS (Choke Fly-2) (Thr. Fly-2)
15-A85	4	Screw (#12-24 x 3/4) Fill. Hd. SEMS (Thr.Body to Bowl)
15-A93	1	Screw (#8-32 x 3/8) Pan Hd. SEMS (Choke Bracket)
15-A99	1	Screw (#8-32 x 5/16) Fill. Hd. SEMS (Choke Bracket Clip)
16-4	1	Gasket - Float Valve Seat
16-294	1	Gasket - Nozzle Plug & Power Jet Retainer
16-456	1	Gasket - (Nozzle)
16-A41	1	Gasket - Throttle Body to Bowl
16-A152	1	Gasket - Nozzle Plug
16-686	1	Gasket Set
24-262	1	Spring - Throttle Stop Screw
24-340	1	Spring - Idle Needle
24-A3	1	Spring - Choke Return
24-A446	1	Spring - Throttle Stop
26-666	1	Choke Shaft Assembly
27-540	1	Choke Fly Assembly
28-49	1	Swivel - Choke
29-81	1	Clip - Choke Bracket
29-123	1	Bracket - Choke
29-538	1	Choke Bracket Assembly
30-739	1	Float & Lever Assembly
32-16	1	Shaft - Float
43-33	1	Needle - Idle Adj.
44-38	1	Packing - Choke Shaft
44-68	1	Packing - Throttle Shaft
46-A11	1	Venturi (7/8 Throat)
47-449	1	Main Nozzle
49-101-L	1	Idle Jet
49-303	1	Power Jet
49-527	1	Power Jet Nozzle Plug & Gasket Assembly
55-230	1	Cup - Choke Shaft Plug
55-261	1	Retainer - Throttle Shaft Packing
55-358	1	Cup - Throttle Shaft Hole Plug
80-171	1	Drill Plug (Name Plate & Idle Plug Hole)
80-187	1	Nozzle Plug
82-16	1	Cotter - Choke Swivel
99-21	1	Drain Plug
227-1717	1	Throttle Body Assembly
233-543	1	Float Valve, Seat & Gasket Assembly, Matched
286-1331	1	Package Repair Kit



TEMPORARY SERVICE PARTS LIST - INSERT IN THE PROPER SECTION OF YOUR MANUAL

4000 UFT Truck		Minneapolis-Moline #10-A16902	TSX-825
PART NO.	QUAN.	PART NAME	
10-3885	1	Carbureter Body Assembly	
13-1301	1	Throttle Shaft Assembly	
14-225	1	Fly - Throttle (15°)	
15-108	1	Screw (#8-32 x 5/16) Slot. Hex Hd. (Choke Swivel)	
15-118	1	Screw (#8-32 x 5/8) Fill. Head (Throttle Adjusting)	
15-483	4	Screw (#6-32 x 1/4) SEMS Binding Head (Choke Fly-2)(Thr. Fly-2)	
15-A85	4	Screw (#12-24 x 3/4) SEMS Fill. Hd. (Throttle Body to Bowl)	
15-A93	1	Screw (#8-32 x 3/8) SEMS Pan Head (Choke Bracket)	
15-B20	1	Screw (#8-32 x 5/16) SEMS Slot. Hex Hd. (Choke Bracket Clip)	
16-4	1	Gasket - Float Valve Seat	
16-294	1	Gasket - Main Adj. Needle Seat & Bowl Plug	
16-456	1	Gasket - Nozzle	
16-A41	1	Gasket - Throttle Body to Bowl	
16-A152	1	Gasket - Power Jet	
16-667	1	Gasket Assortment - Service	
24-262	1	Spring - Throttle Stop Screw	
24-340	1	Spring - Idle Needle	
24-A3	1	Spring - Choke Return	
24-A446	1	Spring - Throttle Stop	
26-836	1	Choke Shaft Assembly	
27-540	1	Choke Fly Assembly	
28-49	1	Swivel - Choke	
29-81	1	Clip - Choke Bracket	
29-177	1	Bracket - Choke	
29-578	1	Choke Bracket Assembly	
30-739	1	Float & Lever Assembly	
32-16	1	Shaft - Float	
43-33	1	Needle - Idle Adjusting	
44-38	1	Packing - Choke Shaft	
44-68	1	Packing - Throttle Shaft	
46-A11	1	Venturi - (7/8 Throat)	
47-449	1	Main Nozzle	
49-101-L	1	Idle Jet	
49-303	1	Power Jet	
49-527	1	Power Jet Assembly	
55-230	1	Cup - Choke Shaft Plug	
55-261	1	Retainer - Throttle Shaft Packing	
55-358	1	Cup - Throttle Shaft Hole Plug	
80-171	1	Drill Plug (Name Plate)	
80-187	1	Power Jet Retainer Plug	
82-16	1	Cotter - Choke Swivel	
99-21	1	Drain Plug	
227-1743	1	Throttle Body Assembly	
233-543	1	Float Valve Seat & Gasket Assembly - Matched	
286-1361		Repair Kit	

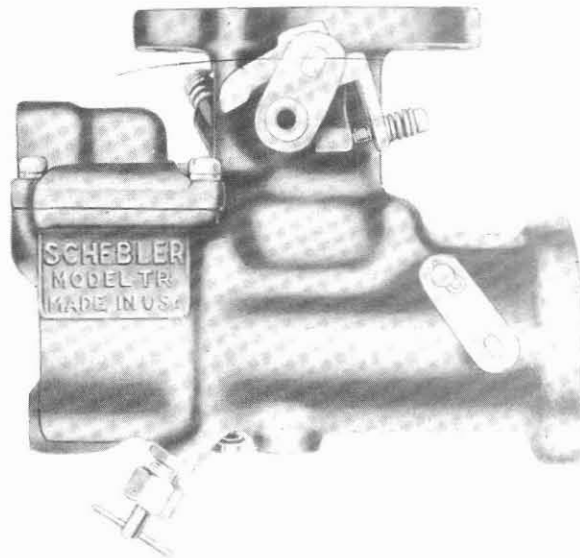
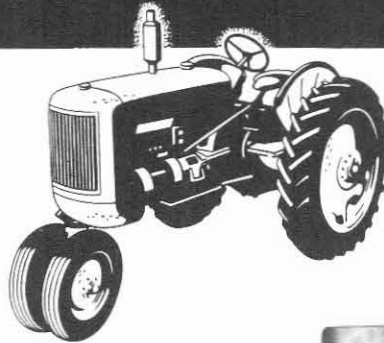




SECTION III  
**MINNEAPOLIS-MOLINE**  
TRX SERIES

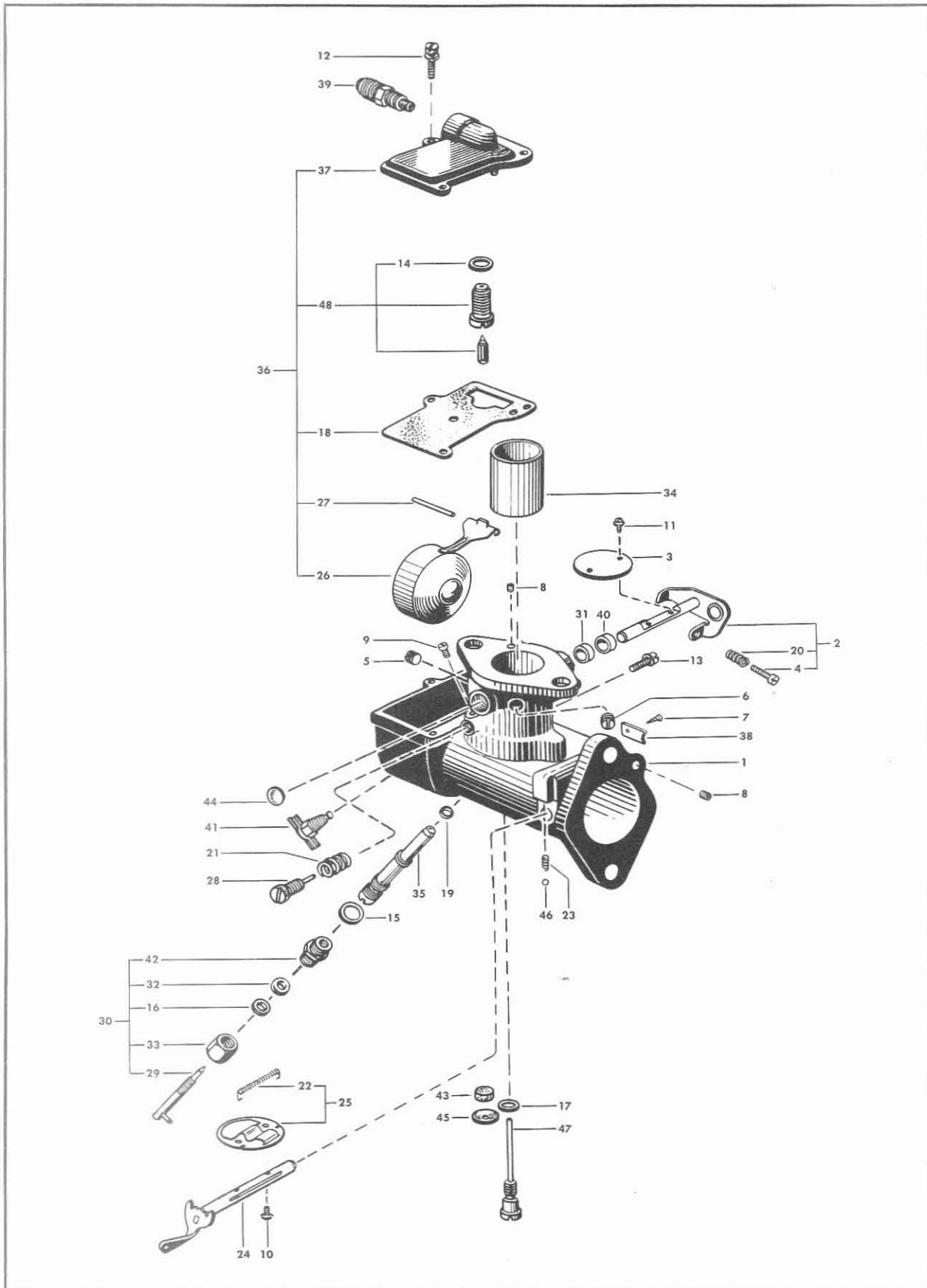
# TRACTOR

*Carbureters*



**MARVEL-SCHEBLER PRODUCTS DIVISION,**  
BORG-WARNER CORPORATION  
DECATUR, ILLINOIS, U. S. A.

MINNEAPOLIS-MOLINE — TRACTOR  
TRX-12



Marvel-Schebler Products Division, Borg-Warner Corporation, Decatur, Illinois, U. S. A.

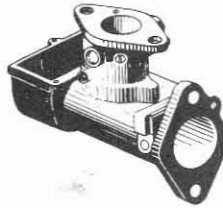
# MINNEAPOLIS-MOLINE — TRACTOR CARBURETERS

ISSUED MARCH 1953

Model Application	Engine	Carbureter Number	Fuel	Superseded by	Customer Part No.	◆Repair Kit No.	§Gasket Kit No.	Float Valve & Seat Assy
NTX, G 4 Harvester, ZT . . . .	OE-OEA, REC, RE	TRX-12	Gasoline	.....	RE-733	286-566	16-587	233-558

◆The repair kit includes the throttle shaft, float valve and seat assembly, and the gasket kit.  
§The flange gasket can be supplied separately. Specify the carbureter number when ordering.

## BASIC SUBASSEMBLIES



CARBURETER BODY ASSEMBLY

Carbureter Number	Marvel-Schebler Part Number	Minneapolis-Moline Part Number
TRX-12	10-1783	RE-7100

Ref. No.	Part Name	Marvel-Schebler Part Number	Minneapolis-Moline Part Number	TRX-12
1	Body Assy — Carbureter . . . . . (See Basic Subassembly)			1
2	Shaft, Stop & Lever Assy — Throttle . . . . .	13-678	RE-7102	1
3	Valve — Throttle (22°) . . . . .	14-139	RE-7103	1
4	Screw — Throttle Stop . . . . .	15-118	RE-7133	1
5	Screw — Idle Drilling (Headless, 1/4-28) . . . . .	15-223		2
6	Screw — Idle Drilling (Headless, 5/16-24) . . . . .	15-274	LE-7035	1
7	Screw — Drive, Numbering Plate (No. 2 x 3/16) . . . . .	15-367		1
8	Screw — Drill Plug (No. 10-32 x 1/2) . . . . .	15-392		2
9	Screw — Drill Plug (No. 8-32 x 15/16) . . . . .	15-409	RE-7134	2
10	Screw & Lock Washer Assy — Choke Valve (No. 6-32 x 1/4) . . . . .	15-483	LE-7109	2
11	Screw & Lock Washer Assy — Throttle Valve (No. 6-32 x 1/4) . . . . .	15-483	LE-7109	2
12	Screw & Lock Washer Assy — Bowl Cover to Body (No. 10-24 x 5/8) . . . . .	15-A86		3
13	Screw & Lock Washer — Venturi Lock (No. 8-32 x 3/8) . . . . .	15-A93	9677-R	1
14	Gasket — Float Valve Seat . . . . .	16-4	RE-7124	1
15	Gasket — Nozzle Retainer . . . . .	16-4	RE-7124	1
16	Gasket — Power Adjusting Needle Packing Retainer . . . . .	16-17	RE-7125	1
17	Gasket — Idle Tube . . . . .	16-28	RE-7126	1
18	Gasket — Bowl Cover . . . . .	16-299	RE-7128-A	1
19	Gasket — Main Nozzle . . . . .	16-456	RE-7129	1
20	Spring — Throttle Stop Screw . . . . .	24-262	RE-7118	1
21	Spring — Idle Needle . . . . .	24-265	RE-7119	1
22	Spring — Choke Valve Flapper . . . . .	24-367		1
23	Spring — Choke Lever Friction . . . . .	24-442	RE-7122	1
24	Shaft Assy — Choke . . . . .	26-586	RE-7104	1
25	Valve Assy — Choke . . . . .	27-534	RE-7105	1
26	Float & Lever Assy . . . . .	30-596	RE-7106-A	1
27	Shaft — Float Lever . . . . .	32-16	RE-7107	1
28	Needle Assy — Idle Adjusting . . . . .	43-525	RE-7109	1

**MINNEAPOLIS-MOLINE — TRACTOR**  
**TRX-12**

Ref. No.	Part Name	Marvel-Schebler Part Number	Minneapolis-Moline Part Number	TRX-12
29	Needle Assy — Power Adjusting	43-532	.....	
30	Needle Assy — Power Adjusting (complete)	43-546	RE-7110	
31	Packing — Throttle Shaft	44-27	RE-739	
32	Packing — Power Adjusting Needle	44-28	RE-7111	
33	Nut — Power Adjusting Needle	45-1	RE-7112	
34	Venturi (13/16" Diameter Throat)	46-344	RE-7113	
35	Nozzle — Main	47-209	.....	
36	Cover Assy — Bowl (complete)	56-551	RE-7101-A	
37	Cover Assy — Bowl	56-553	.....	
38	Plate — Numbering	(Specify TRX Number)	.....	
39	Strainer Assy	67-518	RE-7123	
40	Spacer — Throttle Shaft Packing Retainer	79-65	RE-740	
41	Cock — Drain	87-3A	RE-9058	
42	Retainer — Power Adjusting Needle	94-16	RE-7117	
43	Strainer — Fuel Drain	95-40	EE-9532	
44	Plug — Expansion, Throttle Shaft	179-10	.....	
45	Plug — Expansion, Bowl Drain	179-35	EE-9534	
46	Ball — Choke Lever Friction	206-21	RE-7138	
47	Tube Assy — Idle	229-536	EE-9511	
48	Valve & Seat Assy — Float	233-558	RE-7140-A	

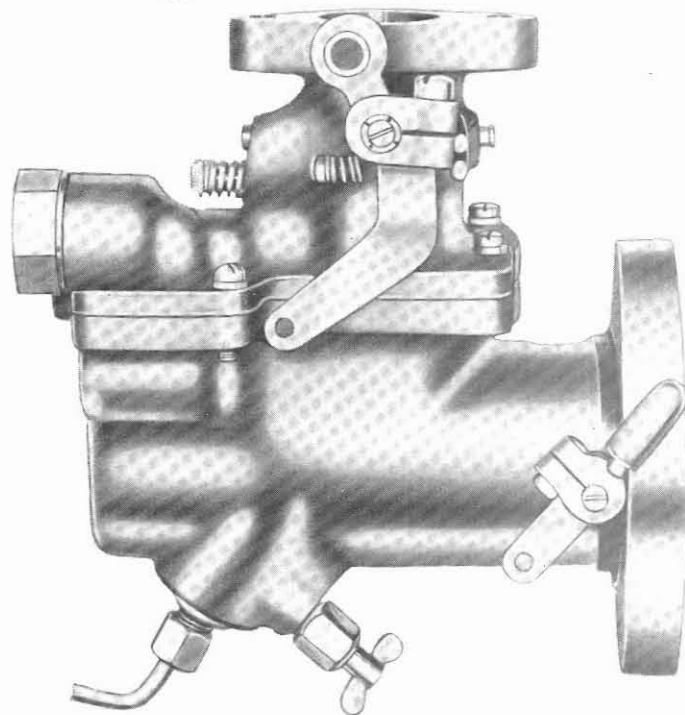
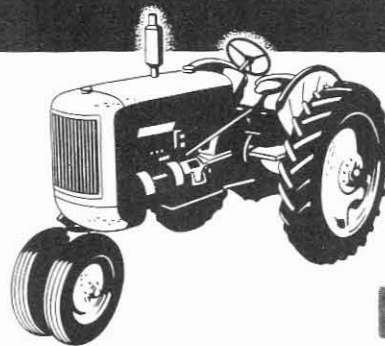
SECTION III

MINNEAPOLIS-MOLINE

TTX SERIES

# TRACTOR

*Carburetors*



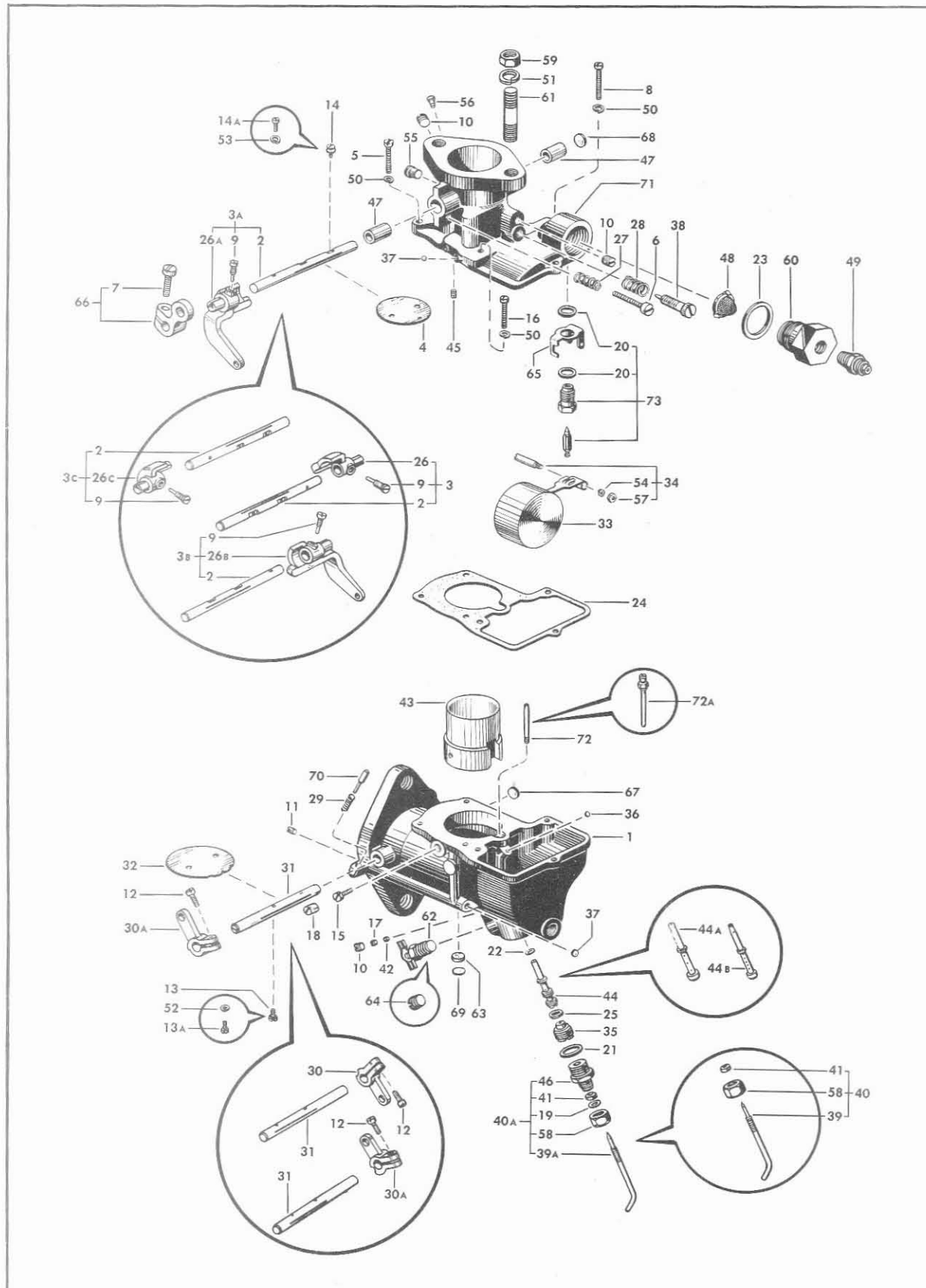
**MARVEL-SCHEBLER PRODUCTS DIVISION,**

**BORG-WARNER CORPORATION**

**DECATUR, ILLINOIS, U. S. A.**

MINNEAPOLIS-MOLINE — TRACTOR

TTX-5 to TTX-24



Marvel-Schebler Products Division, Borg-Warner Corporation, Decatur, Illinois, U. S. A.



# MINNEAPOLIS-MOLINE — TRACTOR CARBURETERS

ISSUED MARCH 1953

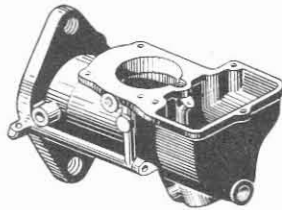
Model Application	Engine	Carbureter Number	Fuel	Superseded by	Customer Part No.	◆Repair Kit No.	§Gasket Kit No.	Float Valve & Seat Assy
KT, MT	KE	*TTX-5	Gasoline	TTX-15	KE-817C	286-551	16-621	X-2695
FT		*TTX-6	Gasoline	.....	FE-385E	286-551	16-621	X-2695
KTA, MTA	KEA	*TTX-15	Gasoline	.....	KE-817H	286-553	16-622	X-2840
GT	GE	*TTX-16	Gasoline	.....	GE-6B	286-552	16-622	X-2840
UT	KEC	*TTX-17	Gasoline	.....	KE-817J	286-553	16-622	X-2840
UT	KEC & KEF	*TTX-23	Gasoline	TSX-68	GE-817K	286-559	16-622	X-2840
UT		*TTX-24	Gasoline	TSX-67	KE-817K	286-553	16-622	X-2840

◆The repair kit includes the throttle shaft, float valve and seat assembly, and the gasket kit.

§ The flange gasket can be supplied separately. Specify the carbureter number when ordering.

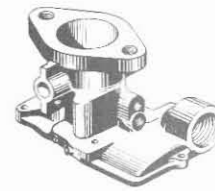
\* NOTE—Complete carbureters can no longer be supplied. Service items, with the exception of castings, are still available.

## BASIC SUBASSEMBLIES



CARBURETER BODY ASSY

Carbureter Number	Marvel-Schebler Part Number	Minn.-Moline Part Number
TTX-5	X-2564	
TTX-6	X-2564	
TTX-15	X-2797	KE-7289
TTX-16	X-2797	KE-7289
TTX-17	X-2892	KE-7308
TTX-23	X-2797	KE-7289
TTX-24	10-1938	KE-7308A



THROTTLE BODY & BUSHING ASSY

Carbureter Number	Marvel-Schebler Part Number	Minn.-Moline Part Number
TTX-5	X-2655	
TTX-6	X-2656	
TTX-15	X-2813	KE-7288
TTX-16	X-2796	FE-6345
TTX-17	X-2893	KE-7307
TTX-23	X-2796	FE-6345
TTX-24	X-2813	KE-7288

Ref. No.	Part Name	Marvel-Schebler Part Number	Minn.-Moline Part Number	TTX-5	TTX-6	TTX-15	TTX-16	TTX-17	TTX-23	TTX-24
1	Body Assy — Carbureter	(See Basic Subassembly)		1	1	1	1	1	1	1
2	Shaft — Throttle	S-2290	KE-7211	1	1	1	1	1	1	1
3	Shaft, Stop & Lever Assy — Throttle	13-765		-	-	-	-	-	-	1
3A	Shaft, Stop & Lever Assy — Throttle	X-2558		-	1	-	1	-	-	-
3B	Shaft, Stop & Lever Assy — Throttle	X-2559		1	-	1	-	-	-	-
3C	Shaft, Stop & Lever Assy — Throttle	X-2891		-	-	-	1	1	-	-
4	Valve — Throttle (21°)	14-247	FE-6347-A	-	1	-	1	-	1	-
	(22°)	14-248	KE-7213	1	-	1	-	1	-	1
5	Screw — Throttle Body to Bowl (No. 10-24 x 7/8)	15-72		3	3	3	3	3	3	3
6	Screw — Throttle Stop (No. 10-24 x 7/8)	15-72		-	-	1	1	1	1	1
	(No. 10-24 x 3/4)	15-151		1	1	-	-	-	-	-
7	Screw — Governor Lever Clamp	15-129		1	1	1	1	1	1	1
8	Screw — Throttle Body to Bowl (No. 10-24 x 3/4)	15-151		1	1	1	1	1	1	1
9	Screw — Throttle Stop Lever Retaining (No. 10-32)	15-181	KE-7299	1	1	1	1	1	1	1
10	Screw — Drill Plug (Headless, 1/4-28)	15-223	KE-7245	2	2	1	1	1	1	1
11	Screw — Drill Plug, Back Suction Channel (No. 10-32)	15-392		-	-	1	1	1	1	1

**MINNEAPOLIS-MOLINE — TRACTOR**  
 TTX-5 to TTX-24

Ref. No.	Part Name	Marvel-Schebler Part Number	Minn.-Moline Part Number	TTX-5	TTX-6	TTX-15	TTX-16	TTX-17	TTX-23	TTX-24
12	Screw — Choke Lever Clamp (No. 8-32)	15-427	KE-7239	1	1	1	1	1	1	1
13	Screw & Lock Washer Assy — Choke Valve (No. 6-32 x 1/4)	15-483	LE-7019	-	-	2	2	2	2	2
13A	Screw — Choke Valve (No. 6-32)	SI-26		2	2	-	-	-	-	-
14	Screw & Lock Washer Assy — Throttle Valve (No. 6-32 x 1/4)	15-483	LE-7019	-	-	2	2	2	2	2
14A	Screw — Throttle Valve (No. 6-32)	SI-21		2	2	-	-	-	-	-
15	Screw — Venturi Retaining (No. 10-24 x 3/8)	15-A224	KE-7243	1	1	1	1	1	1	1
16	Screw — Throttle Body to Bowl (No. 10-24 x 1-1/8)	15-A225	KE-7227	1	1	1	1	1	1	1
17	Screw — Friction Plug, Power Adjusting Needle Seat (Headless, No. 8-32)	S-1168		1	1	-	-	-	-	-
18	Screw — Drill Plug (Headless, 5/16-24)	S-2083	KE-7246	1	1	1	2	1	2	1
19	Gasket — Power Adjusting Needle Retainer	16-29		-	-	1	1	1	1	1
20	Gasket — Float Valve Seat	16-294		2	2	2	2	2	2	2
21	Gasket — Power Adjusting Needle	16-364	KE-7254	1	1	1	1	1	1	1
22	Gasket — Main Nozzle	16-456	RE-7129	1	1	1	1	1	1	1
23	Gasket — Strainer Nut	16-A168	KE-7208	1	1	1	1	1	1	1
24	Gasket — Throttle Body to Bowl	16-A187	KE-7203	1	1	1	1	1	1	1
25	Gasket — Power Adjusting Needle Seat	O		1	1	-	-	-	-	-
26	Lever — Throttle Stop	21-144		-	-	-	-	-	-	1
26A	Lever — Throttle Stop	T-33		-	1	-	1	-	-	-
26B	Lever — Throttle Stop	T-34		1	-	1	-	-	-	-
26C	Lever — Throttle Stop	T-78		-	-	-	-	1	1	-
27	Spring — Throttle Stop Screw	24-A218	KE-7241	1	1	1	1	1	1	1
28	Spring — Idle Needle	24-265	RE-7119	1	1	1	1	1	1	1
29	Spring — Choke Shaft Lever Plunger	51L	KE-7240	1	1	1	1	1	1	1
30	Lever — Choke Shaft	25-292		1	1	1	1	-	1	-
30A	Lever — Choke Shaft	T-72		-	-	-	-	1	-	1
31	Shaft — Choke	S-2291	KE-7231	1	1	1	1	1	1	1
32	Valve — Choke (15°)	27-227	KE-7233	1	1	1	1	1	1	1
33	Float & Lever Assy	30-718	KE-7219	1	1	1	1	1	1	1
34	Shaft Assy — Float Lever	X-2404A	KE-7220	1	1	1	1	1	1	1
35	Seat — Power Adjusting Needle	S-2280		1	1	-	-	-	-	-
		S-2494	FE-6348	-	-	-	1	-	1	-
		S-2506	KE-7295	-	-	1	-	1	-	1
36	Ball — Lead, Nozzle	37-4		2	1	1	1	1	1	1
37	Ball — Lead, Bowl Bleed	37-5		4	3	3	3	5	3	3
38	Needle Assy — Idle Adjusting	43-525	RE-7109	1	1	1	1	1	1	1
39	Needle — Power Adjusting	S-2294		1	1	-	-	-	-	-
39A	Needle — Power Adjusting	S-2490		-	-	1	1	1	1	1
40	Needle Assy — Power Adjusting (complete)	X-2561		1	1	-	-	-	-	-
40A	Needle Assy — Power Adjusting (complete)	X-2798	KE-7301	-	-	1	1	1	1	1
41	Packing — Power Adjusting Needle	S-257A		1	1	1	1	1	1	1
42	Plug — Friction, Power Adjusting Needle Seat	S-225B		1	1	-	-	-	-	-
43	Venturi (1-1/16" Diameter Throat)	46-A135	FE-6349	-	-	-	1	-	1	-
	(7/8" Diameter Throat)	T-27S		1	-	-	-	-	-	-
	(15/16" Diameter Throat)	T-27W	KE-7296	-	-	1	-	1	-	1
	(1" Diameter Throat)	T-30H		-	1	-	-	-	-	-
44	Nozzle — Main	47-403	FE-6350	-	-	-	1	-	1	-
44A	Nozzle — Main	S-2298A		1	-	-	-	-	-	-
44B	Nozzle — Main	S-2299A		-	1	-	-	-	-	-
44	Nozzle — Main	S-2503	KE-7297	-	-	1	-	1	-	1
45	Jet — Economizer	S-2500	FE-6352	-	-	1	1	1	-	1

Ref. No.	Part Name	Marvel-Schebler Part Number	Minn.-Moline Part Number	TTX-5	TTX-6	TTX-15	TTX-16	TTX-17	TTX-23	TTX-24
46	Retainer — Power Adjusting Needle	S-2056	KE-7232	1	1	1	1	1	1	1
47	Bushing — Throttle Shaft	60-261	KE-7294	2	2	2	2	2	2	2
48	Strainer Assy	67-538	KE-7209	1	1	1	1	1	1	1
49	Fitting — Fuel Inlet	68-2		1	1	—	—	—	—	—
50	Washer — Lock, Body Screw	78-5		5	5	5	5	5	5	5
51	Washer — Lock, Flange Stud	78-6 78-435		2	—	2	—	2	—	2
52	Washer — Lock, Choke Valve	78-255		—	2	—	—	—	—	—
53	Washer — Lock, Throttle Valve	78-255		2	2	—	—	—	—	—
54	Washer — Lock, Float Lever Shaft	78-255		1	1	1	1	1	1	1
55	Plug — Idle Drilling	80-64		—	—	1	1	1	1	1
56	Plug — Drill, Throttle Body	S-2504	KE-7303	—	—	2	—	2	—	2
57	Nut — Float Lever Shaft	81-205		1	1	1	1	1	1	1
58	Nut — Power Adjusting Needle Packing	S-27		1	1	1	1	1	1	1
59	Nut — Flange Stud	S-421 S-1487	KE-7251	2	—	2	—	2	—	2
60	Nut — Strainer	81-204	KE-7207	1	1	1	1	1	1	1
61	Stud — Flange	S-2292 S-2301	KE-7250	2	—	2	—	2	—	2
62	Cock — Drain	87-3A	KE-7210	1	1	1	1	1	1	1
63	Strainer — Fuel Drain	95-40	EE-9532	1	1	1	1	1	1	1
64	Plug — Pipe, Bowl Drain	99-4		—	—	—	—	1	—	1
65	Bracket — Float Lever	P-1025A	KE-7252	1	1	1	1	1	1	1
66	Lever Assy — Governor	X-2563 X-2927	KE-7215 KE-7310	1 —	1 —	1 —	1 —	— 1	— 1	— 1
67	Plug — Expansion, Choke Shaft	179-2 179-41	KE-7249	—	—	1	—	—	—	—
68	Plug — Expansion, Throttle Shaft	179-15		1	1	1	1	1	1	1
69	Plug — Expansion, Bowl Drain	179-35	EE-9534	1	1	1	1	1	1	1
70	Plunger — Choke Shaft Lever	S-2293	KE-7234	1	1	1	1	1	1	1
71	Body & Bushing Assy — Throttle	(See Basic Subassembly)		1	1	1	1	1	1	1
72	Tube — Idle	229-203	KE-7298	—	—	1	—	1	—	1
72	Tube Assy — Idle	S-2491	FE-6351	—	—	—	1	—	1	—
72A	Tube Assy — Idle	X-2562A		1	1	—	—	—	—	—
73	Valve & Seat Assy — Float	233-577 X-2695	KE-7306	—	—	1	1	1	1	1
				1	1	—	—	—	—	—

