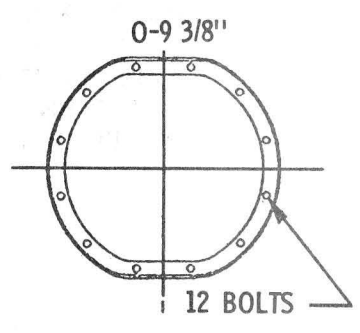
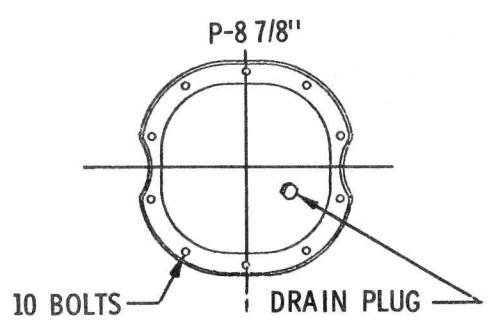
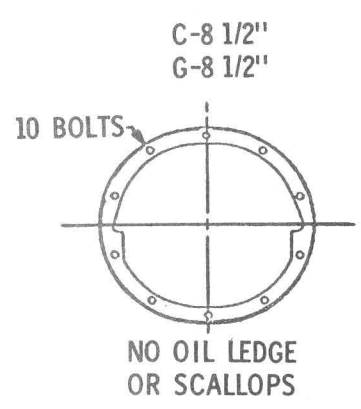
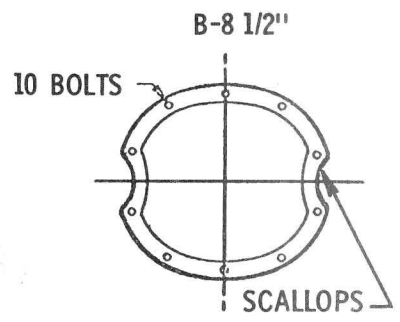
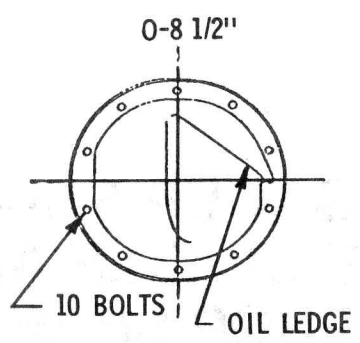
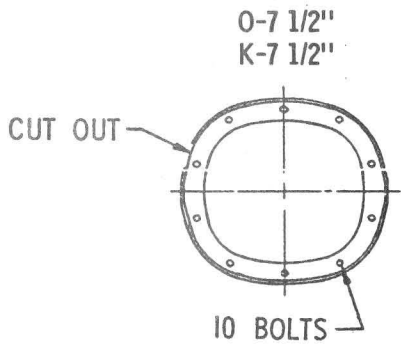
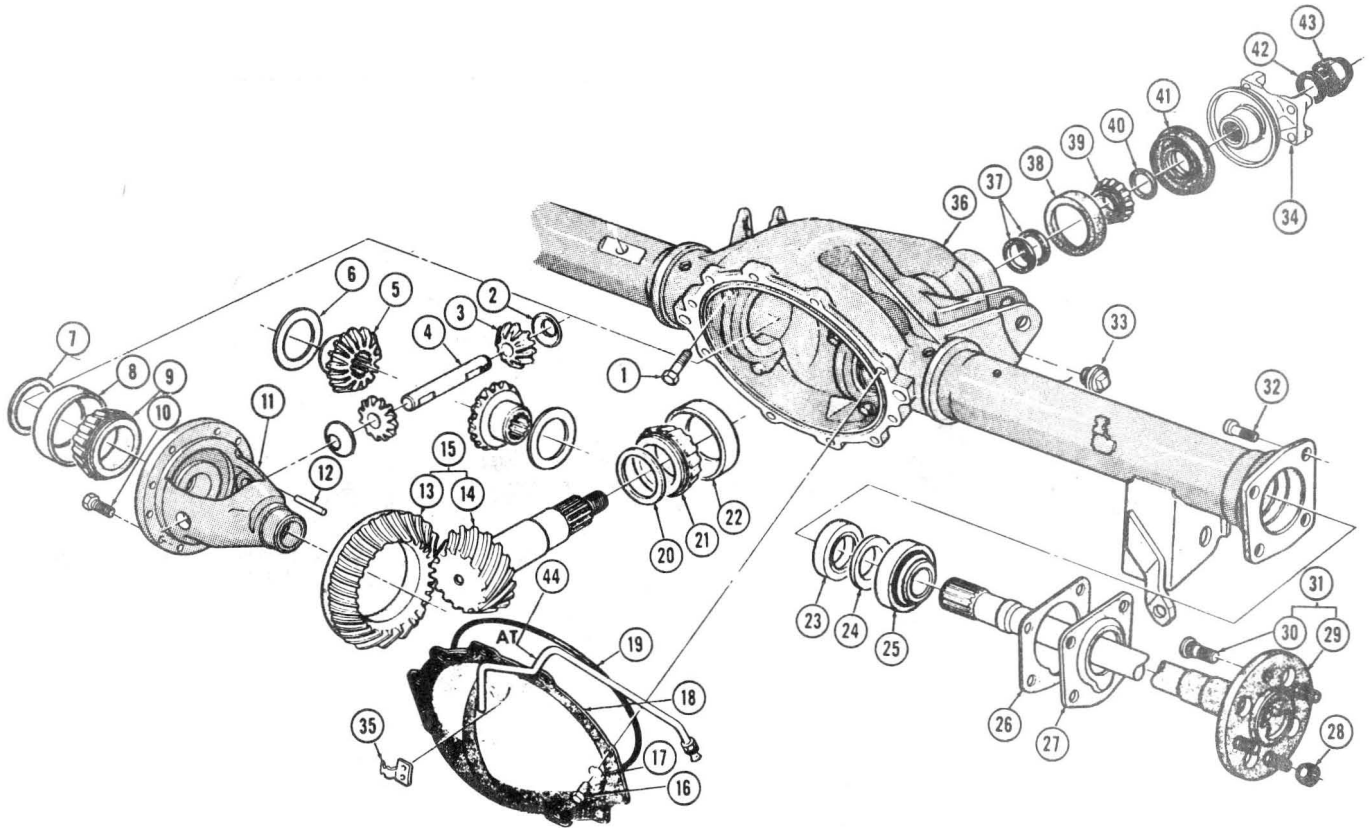


AXLE IDENTIFICATION



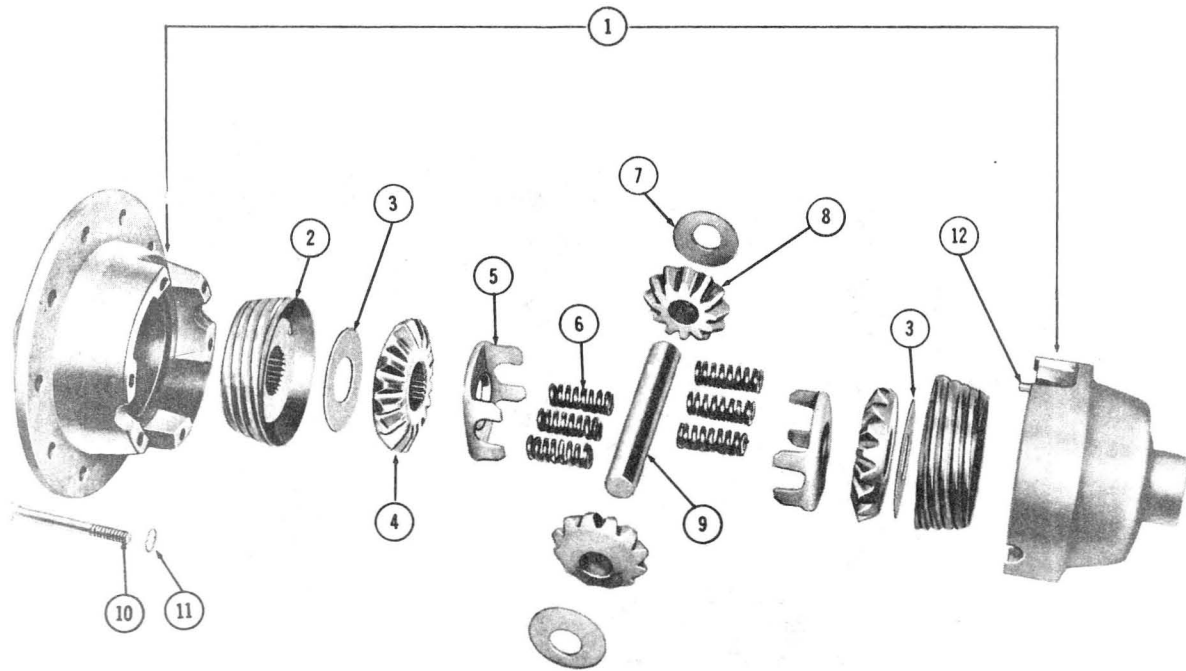
- AXLE IDENTIFICATION**
MANUFACTURER
 B = BUICK
 O = OLDSMOBILE
 K = GM OF CANADA
 P = PONTIAC
 C = CHEVROLET BUFFALO
 G = CHEVROLET DETROIT



**REAR AXLE
(TYPICAL)**

Key	Description	Group
1	Bolt, Differential Carrier Cap	5.506
2	Washer, Differential Pinion Thrust	5.542
3	Gear, Differential Pinion	5.526
4	Shaft, Differential Side Pinion	5.517
5	Gear, Differential Side	5.528
6	Washer, Differential Side Gear Thrust	5.543
7	Shim, Differential Side Bearing Adjusting	5.537
8	Race, Differential Side Bearing Outer Part of #9	N.S.S.
9	Bearing, Differential Side	5.536
10	Bolt	S.S.
11	Case, Differential	5.510
12	Pin, Differential Side Pinion Shaft Lock	5.518
13	Gear, Ring	N.S.S.
14	Gear, Pinion	N.S.S.
15	Gear Package, Differential Ring and Pinion	5.529
16	Bolt	S.S.
17	Washer	S.S.
18	Cover, Rear Axle Housing	5.398
19	Gasket, Cover to Rear Axle Housing	5.399
20	Shim, Differential Pinion Bearing	5.460
21	Bearing, Rear Axle Pinion—Rear	5.484
22	Race, Rear Axle Drive Pinion Outer Bearing Part of #21	N.S.S.

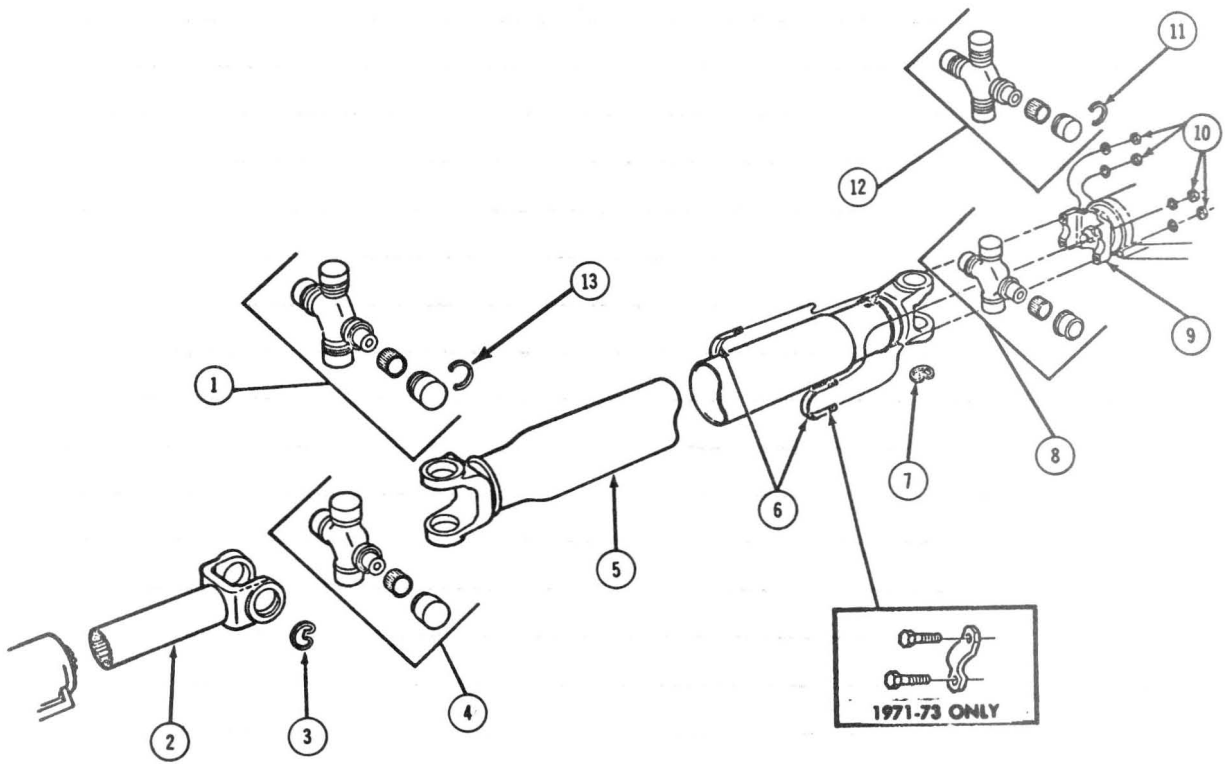
Key	Description	Group
23	Seal, Rear Wheel Bearing Oil	5.822
24	Retainer, Rear Axle Shaft Bearing—Inner	5.816
25	Bearing Package, Rear Axle	5.855
26	Gasket, Bearing Retainer to Axle Housing	5.819
27	Retainer, Rear Axle Shaft Bearing—Outer	5.816
28	Nut, Hub Bolt	5.813
29	Shaft, Rear Axle	N.S.S.
30	Bolt, Rear Wheel Hub	5.812
31	Shaft Assembly, Rear Axle	5.420
32	Bolt, Backing Plate to Axle Hsg.	5.002
33	Plug, Differential Carrier Filler	5.505
34	Flange, Rear Axle Pinion	5.545
35	Bracket, Brake Hose—Rear	4.681
36	Housing, Rear Axle	5.387
37	Spacer, Rear Axle Pinion Bearing	5.453
38	Race, Rear Axle Drive Pinion Outer Bearing Part of #39	N.S.S.
39	Bearing, Differential Pinion Front	5.447
40	Seal, Rear Axle Companion Flange to Pinion Shaft	5.445
41	Seal, Rear Axle Pinion Bearing	5.469
42	Washer, Pinion Flange Retaining	5.595
43	Nut, Rear Axle Drive Pinion Lock	5.595
44	Vent, Rear Axle	5.387



**ANTI-SPIN DIFFERENTIAL CASE
(TYPICAL)**

Key	Description	Group
1	Case, Differential	5.510
2	Cone, Differential Clutch	N.S.S.
3	Washer, Differential Side Gear Spacing	5.528
4	Gear, Differential Side	5.528
5	Block, Differential Spring	5.528
6	Spring, Differential Preload	5.511

Key	Description	Group
7	Washer, Differential Pinion Thrust	5.542
8	Gear, Differential Pinion	5.526
9	Shaft, Differential Side Pinion	5.517
10	Bolt, Differential Case	5.510
11	Lockwasher	S.S.
12	Pin, Differential Pinion Shaft Locking	5.518

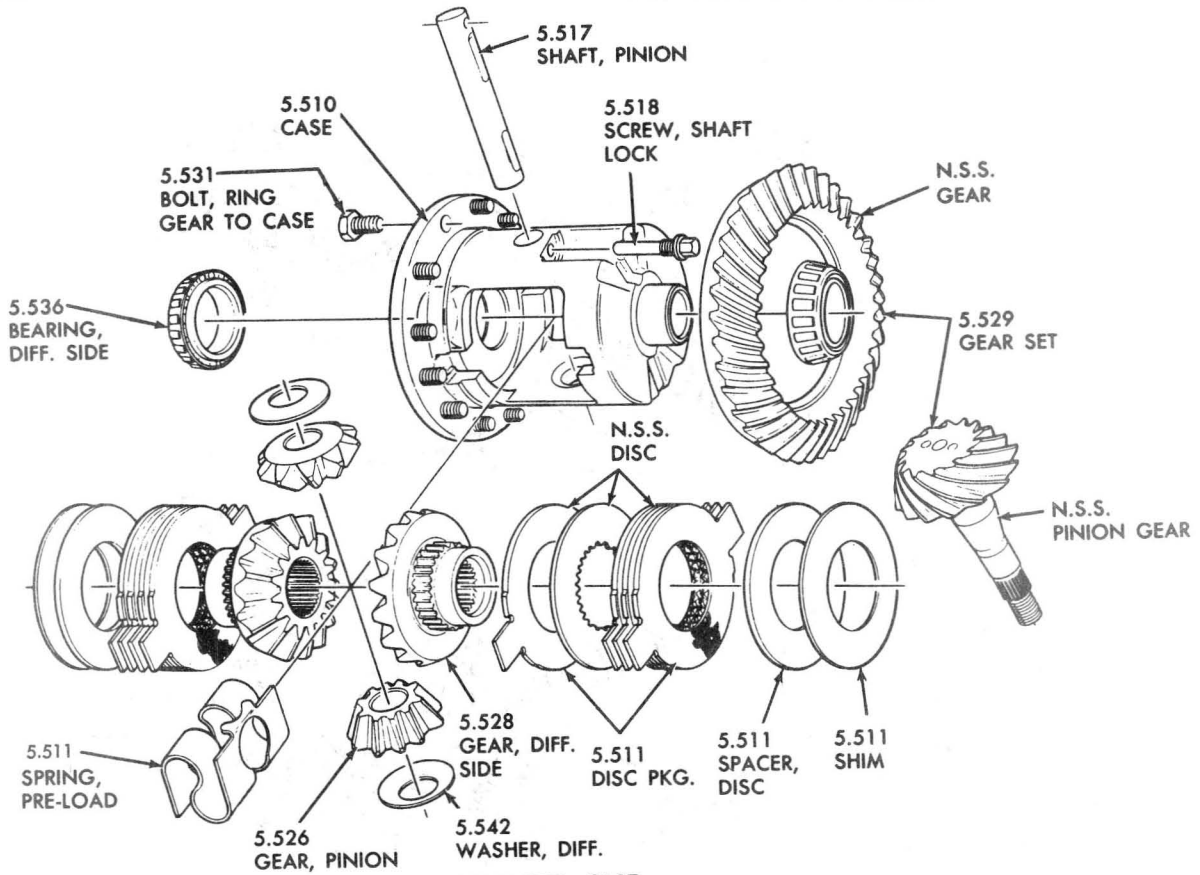


1965 PROPELLER SHAFT DETAILS

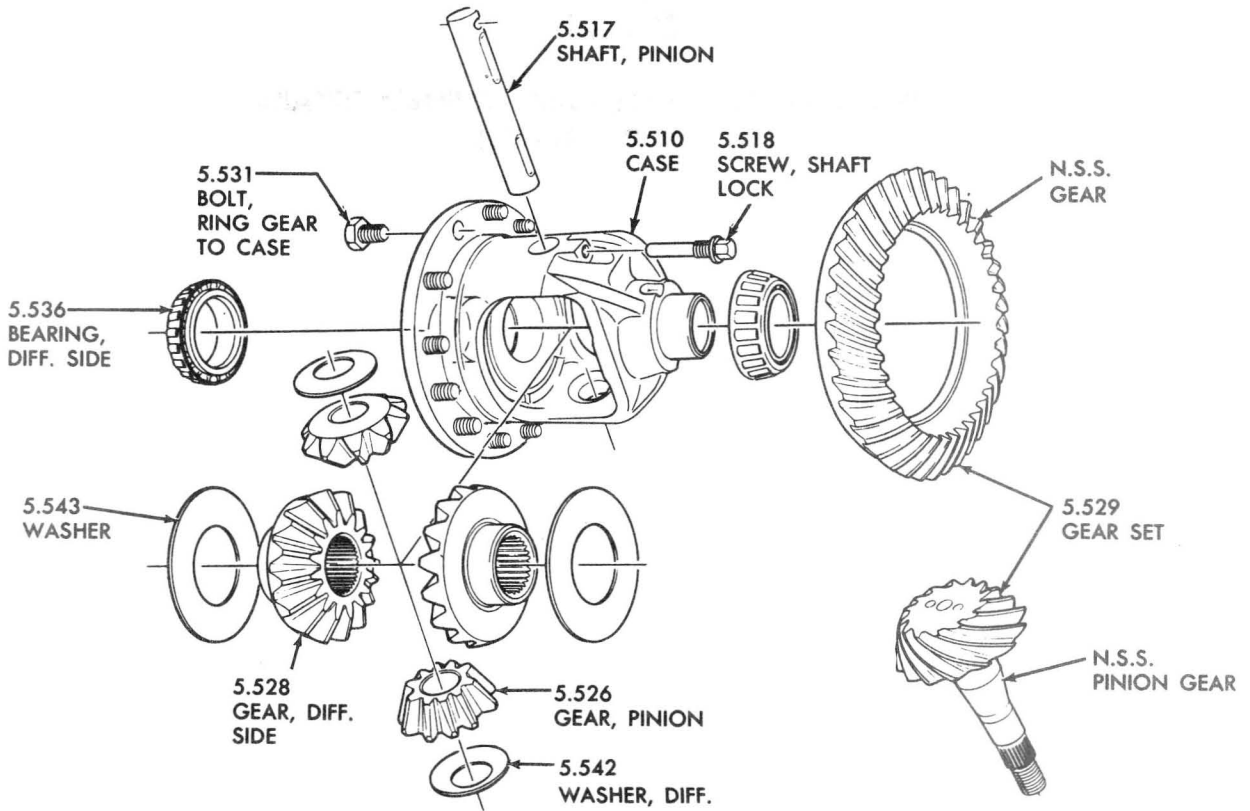
(TYPICAL OF 1966 THRU 1973)

Key	Description	Group
1	U.J. Repair Kit (Saginaw) Front and Rear	5.548
2	Yoke (Front)	5.555
3	Snap Ring (Spicer)	5.586
4	U.J. Repair (Spicer—Frt.)	5.548
5	Shaft Assembly	5.544
6	"U" Bolt	5.586

Key	Description	Group
7	Snap Ring (Spicer)	5.586
8	U.J. Repair Kit (Spicer—Rear)	5.548
9	Flange	5.545
10	Nut	Std. Stock
11	Snap Ring (Saginaw)	5.586
12	U.J. Repair Kit (Saginaw—Front and Rear)	5.548

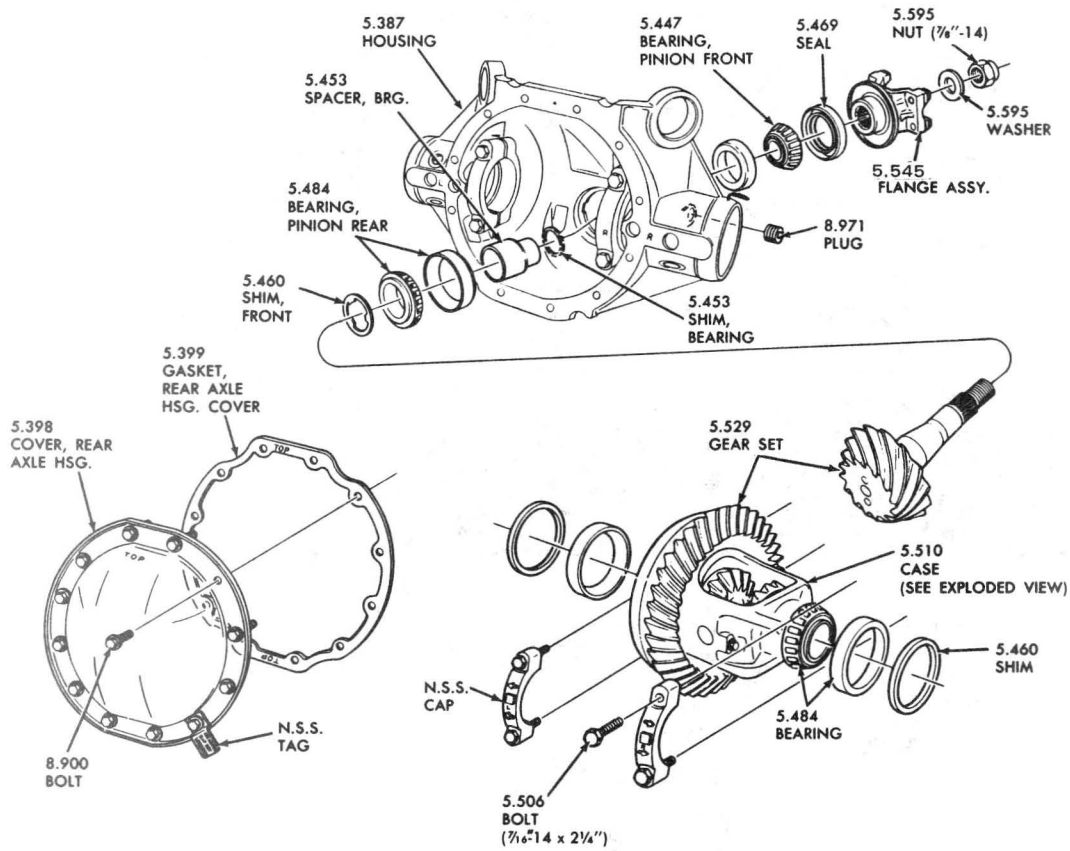


LIMITED SLIP

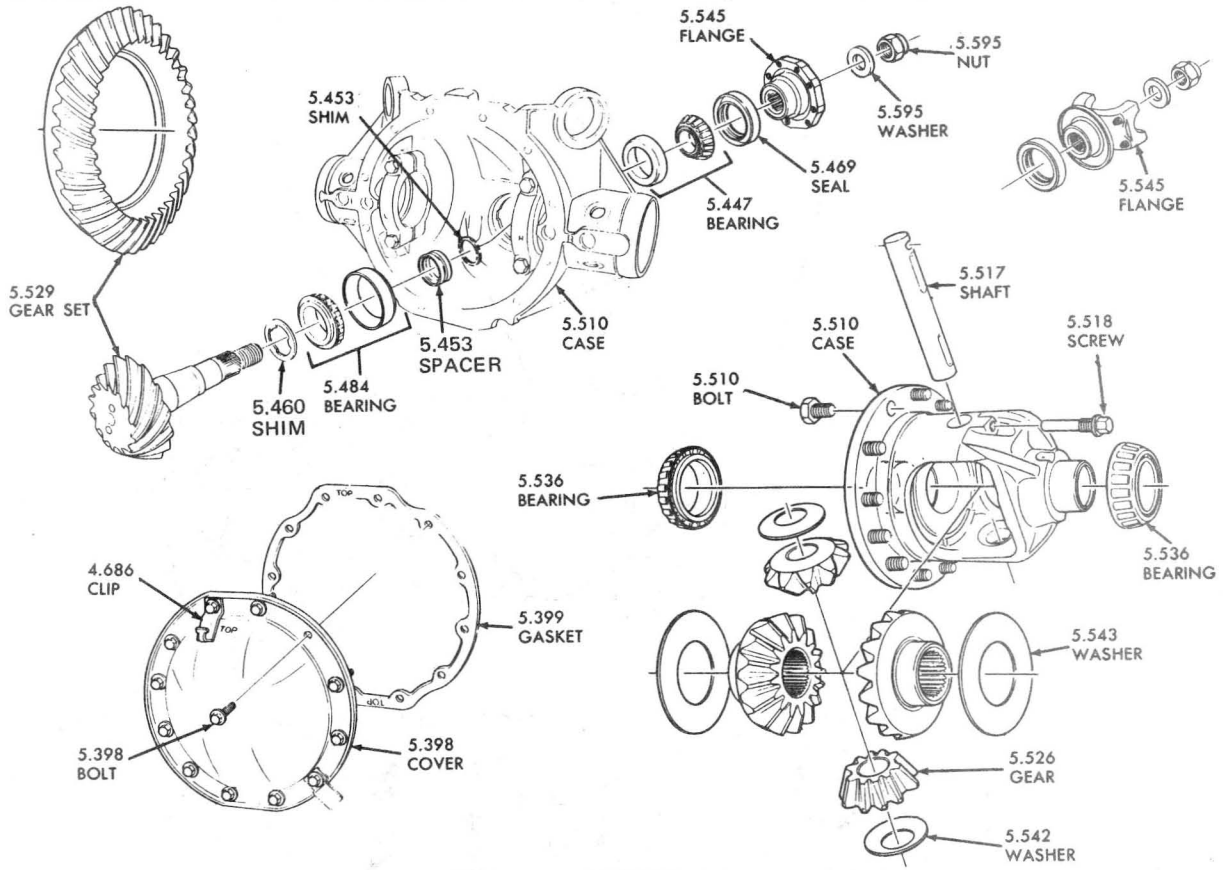


EXC. LIMITED SLIP

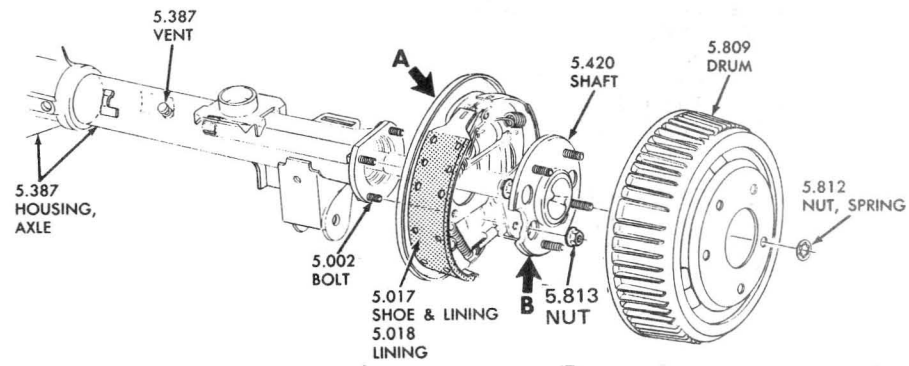
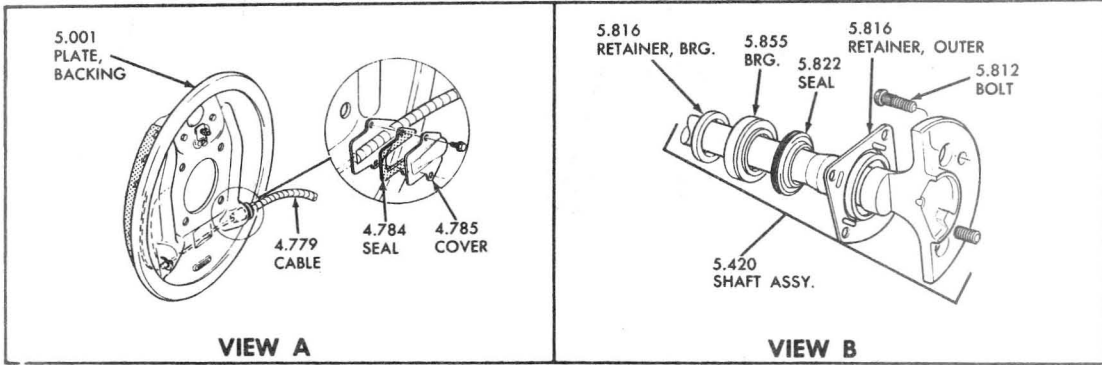
1970-73 DIFFERENTIAL CASE ASSEMBLY



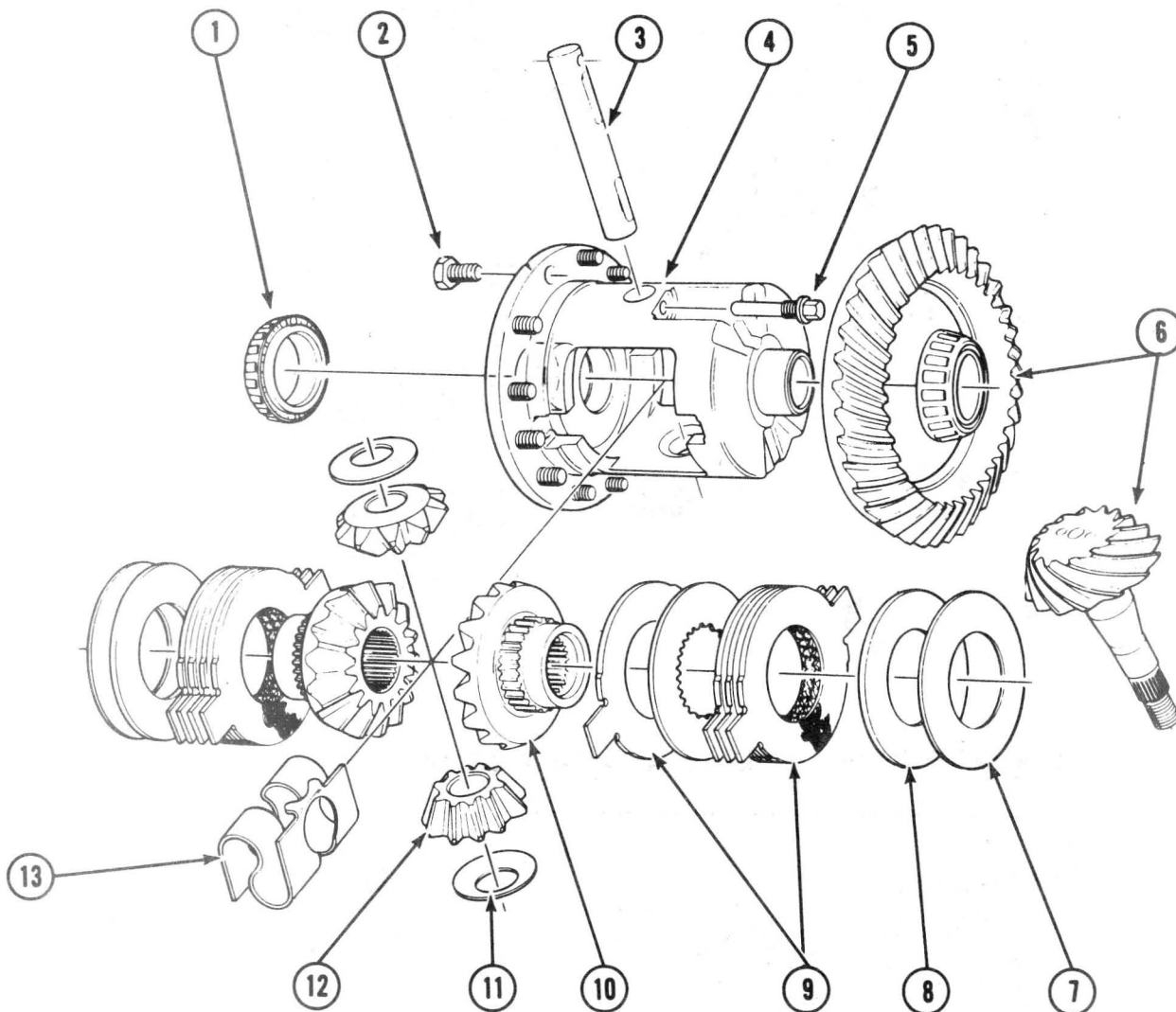
**1970 PINION GEAR, FLANGE, CASE ASSEMBLY DETAILS
 (TYPICAL OF 1971-73)**



1972-74 DIFFERENTIAL HOUSING AND CASE DETAILS — 9-3/8" RING GEAR



1972-74 REAR AXLE AND ATTACHING PARTS — 9-3/8" RING GEAR



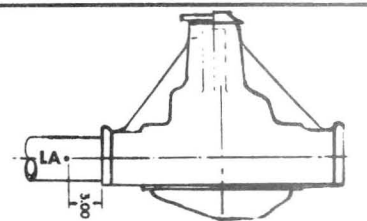
1976 LOCKING DIFFERENTIAL (CORPORATION)

1. BEARING ASM., Differential Side	5.536
2. BOLT, Ring Gear to Case	5.531
3. SHAFT, Pinion	5.517
4. CASE, Differential (less Gears)	5.510
5. SCREW, Pinion Shaft Lock	5.518
6. GEAR PKG., Ring & Pinion	5.529
7. SHIM, Clutch	5.511
8. SPACER, Clutch	5.511
9. DISC KIT, Friction Repair	5.511
10. GEAR, Differential Side	5.528
11. WASHER, Side Pinion	5.542
12. GEAR, Pinion	5.526
13. SPRING, Preload	5.511



1966 DIFFERENTIAL IDENTIFICATION CODE

LOCATION: THE CODE LETTERS MAY BE FOUND STAMPED $\frac{1}{4}$ IN. HIGH ON THE BOTTOM OF THE RIGHT HAND AXLE TUBE APPROXIMATELY 3 IN. FROM THE CARRIER.



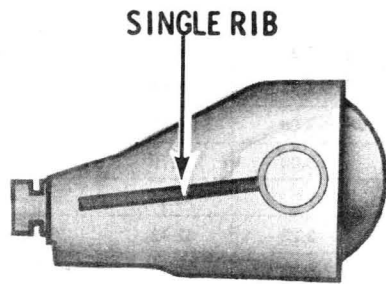
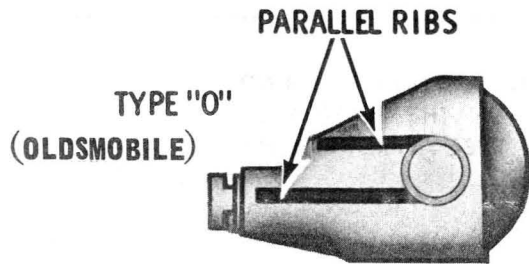
AXLE CODE	AXLE RATIO	NO. GEAR TEETH	TYPE OF AXLE	AXLE CODE	AXLE RATIO	NO. GEAR TEETH	TYPE OF AXLE	AXLE CODE	AXLE RATIO	NO. GEAR TEETH	TYPE OF AXLE
LA	2.78	39:14	STD.	RC	3.08	40:13	STD.	*SG	3.08	40:13	STD.
LB	3.08	40:13	STD.	RD	3.08	40:13	A.S.	*SH	3.08	40:13	A.S.
LC	3.23	42:13	STD.	RE	3.23	42:13	STD.	SI	3.55	39:11	STD.
LD	3.08	40:13	A.S.	RF	3.23	42:13	A.S.	SJ	3.55	39:11	A.S.
LN	2.78	39:14	A.S.	*RI	3.08	40:13	STD.	*SK	2.78	39:14	STD.
LP	3.23	42:13	A.S.	*RJ	3.08	40:13	A.S.	*SL	2.78	39:14	A.S.
QA	2.73	41:15	STD.	*RK	3.23	42:13	STD.	SM	3.08	40:13	STD.
QB	2.73	41:15	A.S.	*RL	3.23	42:13	A.S.	SN	2.08	40:13	A.S.
QC	2.93	41:14	STD.	*RM	2.78	39:14	STD.	SO	3.23	42:13	STD.
QD	2.93	41:14	A.S.	*RN	2.78	39:14	A.S.	SP	3.23	42:13	A.S.
QE	3.08	40:13	STD.	*RO	2.73	41:15	STD.	*SQ	3.08	40:13	STD.
QF	3.08	40:13	A.S.	*RP	2.73	41:15	A.S.	*SR	3.08	40:13	A.S.
QG	3.23	42:13	STD.	*RQ	2.93	41:14	STD.	SU	3.55	39:11	STD.
QH	3.23	42:13	A.S.	*RR	2.93	41:14	A.S.	*SV	3.23	42:13	STD.
QI	3.42	41:12	STD.	*RS	3.08	40:13	STD.	*SW	3.23	42:13	A.S.
QJ	3.42	41:12	A.S.	*RT	3.08	40:13	A.S.	*SX	3.55	39:11	STD.
QK	2.73	41:15	STD.	*RU	3.23	42:13	STD.	SY	3.55	39:11	A.S.
QL	2.73	41:15	A.S.	*RV	3.23	42:13	A.S.	*SZ	3.55	39:11	A.S.
QM	3.08	40:13	STD.	*RW	3.42	41:12	STD.	*TC	3.23	42:13	STD.
QN	3.08	40:13	A.S.	*RX	3.42	41:12	A.S.	*TD	3.23	42:13	A.S.
QO	3.23	42:13	STD.	@RY	3.42	41:12	STD.	*TE	3.55	39:11	STD.
QP	3.23	42:13	A.S.	@RZ	3.42	41:12	A.S.	*TF	3.55	39:11	A.S.
QQ	3.42	41:12	STD.	SA	2.78	39:14	STD.	TG	3.90	39:10	STD.
QR	3.42	41:12	A.S.	SB	2.78	39:14	A.S.	TH	3.90	39:10	A.S.
\$QS	3.42	41:12	STD.	SC	3.08	40:13	STD.	*TJ	3.90	39:10	STD.
\$QT	3.42	41:12	A.S.	SD	3.08	40:13	A.S.	*TK	3.90	39:10	A.S.
RA	2.78	39:14	STD.	SE	3.23	42:13	STD.				
RB	2.78	39:14	A.S.	SF	3.23	42:13	A.S.				

\$Includes Reinforced 15 Inch Wheels and Mountings (Option Y75).

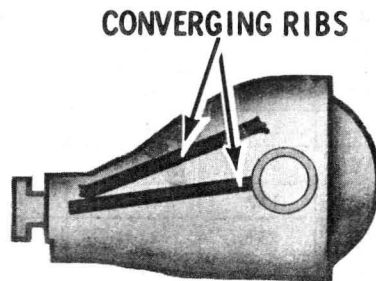
*Includes Heavy Duty Brakes (Option J56).

@Includes Reinforced 15 Inch Wheel and Mountings (Option Y75) and Heavy Duty Brakes (Option J56).

ABBREVIATIONS: A.S.—ANTI SPIN, STD.—STANDARD



TYPE "B" (BUICK)



TYPE "P" (PONTIAC)

1966 & 1967 DIFFERENTIAL IDENTIFICATION

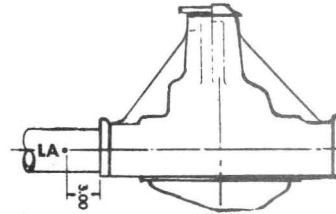


F85
OLDSMOBILE

PARTS CATALOGUE

1967 DIFFERENTIAL IDENTIFICATION CODE

LOCATION: THE CODE LETTERS MAY BE FOUND STAMPED ¼ IN. HIGH ON THE BOTTOM OF THE RIGHT HAND AXLE TUBE APPROXIMATELY 3 IN. FROM THE CARRIER.



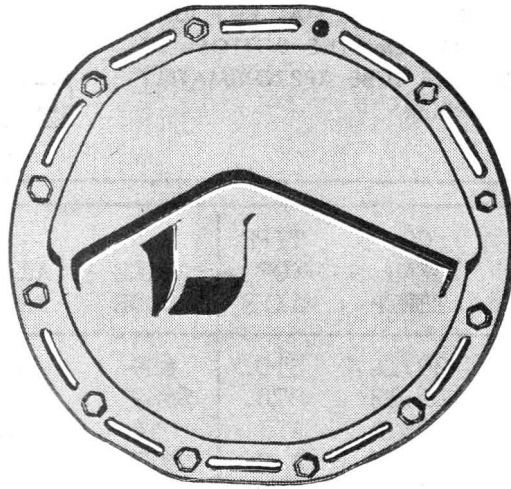
AXLE CODE	AXLE RATIO	NO. GEAR TEETH	TYPE OF AXLE	AXLE CODE	AXLE RATIO	NO. GEAR TEETH	TYPE OF AXLE
LA	2.78	39:14	STD.	#S9	3.42	39:11	A.S.
LC	3.23	42:13	STD.	%#S9	3.42	41:12	A.S.
LN	2.78	39:14	A.S.	TA	2.41	41:17	A.S.
LP	3.23	42:13	A.S.	*TB	2.41	41:17	A.S.
SA	2.78	39:14	STD.	*TC	3.23	42:13	STD.
SB	2.78	39:14	A.S.	*TD	3.23	42:13	A.S.
SC	3.08	40:13	STD.	TL	3.42	39:11	STD.
SD	3.08	40:13	A.S.	%TL	3.42	41:12	STD.
SE	3.23	42:13	STD.	TM	3.42	39:11	A.S.
SF	3.23	42:13	A.S.	%TM	3.42	41:12	A.S.
*SG	3.08	40:13	STD.	TN	3.91	39:10	STD.
*SH	3.08	40:13	A.S.	%TN	3.91	43:11	STD.
*SK	2.78	39:14	STD.	TO	3.91	39:10	A.S.
*SL	2.78	39:14	A.S.	%TO	3.91	43:11	A.S.
SM	3.08	40:13	STD.	*TP	3.42	39:11	STD.
SN	3.08	40:13	A.S.	%*TP	3.42	41:12	STD.
SO	3.23	42:13	STD.	*TQ	3.42	39:11	A.S.
SP	3.23	42:13	A.S.	%*TQ	3.42	41:12	A.S.
*SQ	3.08	40:13	STD.	#TS	2.41	41:17	A.S.
*SR	3.08	40:13	A.S.	*TU	3.91	39:10	STD.
%SS	2.41	41:17	STD.	%*TU	3.91	43:11	STD.
%*ST	2.41	41:17	STD.	*TV	3.91	39:10	A.S.
%#SU	2.41	41:17	STD.	%*TV	3.91	43:11	A.S.
*SV	3.23	42:13	STD.	#T2	3.91	39:10	STD.
*SW	3.23	42:13	A.S.	%#T2	3.91	42:11	STD.
#S2	2.78	39:14	STD.	#T3	3.91	39:10	A.S.
#S3	2.78	39:14	A.S.	%#T3	3.91	43:11	A.S.
#S4	3.08	40:13	STD.	#T4	3.08	40:13	STD.
#S5	3.08	40:13	A.S.	#T5	3.08	40:13	A.S.
#S6	3.23	42:13	STD.	#T6	3.23	42:13	STD.
#S7	3.23	42:13	A.S.	#T6	3.23	42:13	A.S.
#S8	3.42	39:11	STD.	ZFC	3.08	40:13	STD.
%#S8	3.42	41:12	STD.	ZFD	3.08	40:13	A.S.

*Includes Heavy Duty Brakes (Option J56).

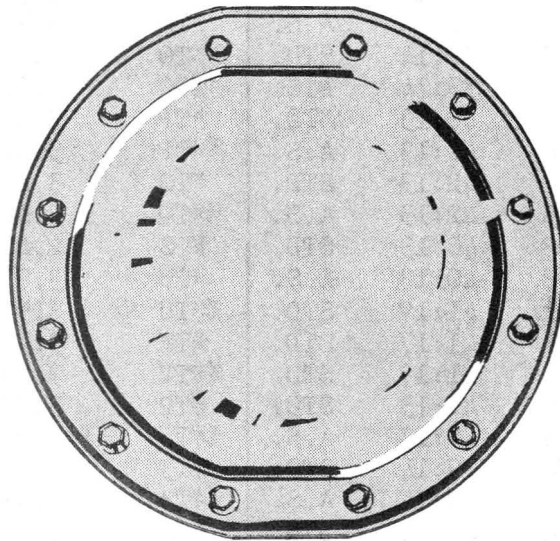
#Used with Front Wheel Disc Brakes (Option J52).

%Used with Type -0- Differential Case. Case has Two Parallel Ribs Along Side.

Abbreviations: A.S. - Anti Spin, STD. - Standard



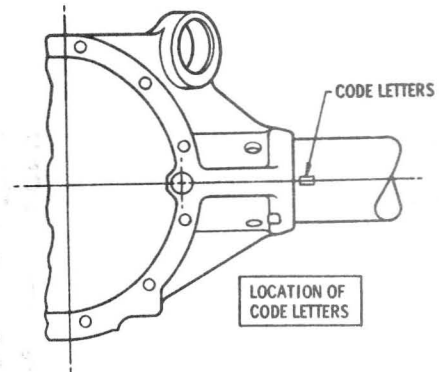
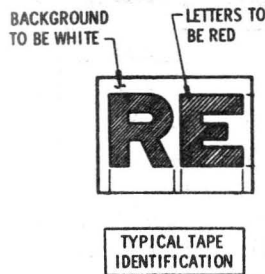
CHEVROLET TYPE AXLE HOUSING COVER



OLDSMOBILE TYPE AXLE HOUSING COVER

1968 REAR AXLE IDENTIFICATION

1968 DIFFERENTIAL IDENTIFICATION CODE



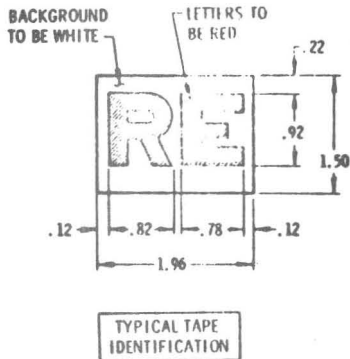
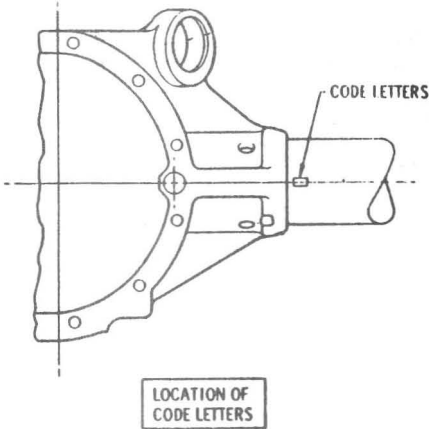
STANDARD TYPE DIFFERENTIAL

LIMITED SLIP DIFFERENTIAL

AXLE CODE	AXLE RATIO	GEAR TEETH NO.	AXLE CODE	AXLE RATIO	GEAR TEETH NO.
RA@	2.73	41-15	BB@	2.73	41-15
RC@	3.07	43-14	RD@	3.07	43-14
RE@	3.31	43-13	RF@	3.31	43-13
R2	2.56	41-16	R3	2.56	41-16
R6*	2.56	41-16	R7*	2.56	41-16
R8@	2.56	41-16	R9@	2.56	41-16
SA	2.78	39-14	SB	2.78	39-14
SC	3.08	40-13	SD	3.08	40-13
SE	3.23	42-13	SF	3.23	42-13
SM	3.08	40-13	SN	3.08	40-13
SO	3.23	42-13	SP	3.23	42-13
S2*	2.78	39-14	S3*	2.78	39-14
S4*	3.08	40-13	S5*	3.08	40-13
S6*	3.23	42-13	S7*	3.23	42-13
S8*	3.42	41-12	S9*	3.42	41-12
TA	2.78	39-14	TB	2.78	39-14
TL	3.42	41-12	TH*@	2.56	41-16
TN	3.91	43-11	TJ*@	2.73	41-15
TR*@	2.56	41-16	TM	3.42	41-12
TT*@	2.73	41-15	TO	3.91	43-11
			TW	4.33	39-9
			TY*	4.33	39-9
T2*	3.91	43-11	T3*	3.91	43-11
T4*@	3.07	43-14	T5*@	3.07	43-14
T6*@	3.31	43-13	T7*@	3.31	43-13

* Front Wheel Disc Brakes @Chev. Type Axle

**1969
DIFFERENTIAL
IDENTIFICATION
CODE**



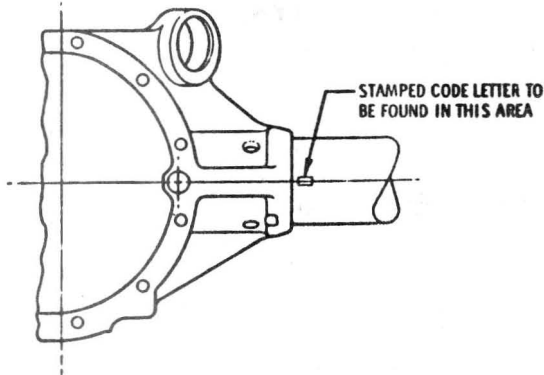
OLDS
TYPE
AXLE

OLDS
TYPE
AXLE

Series	Code	Ratio	Gear Teeth	
STANDARD TYPE DIFFERENTIAL				
331, 335, 332, 336, 342, 34400	R2	2.56	41-16	
	SA	2.78	39-14	
	SC	3.08	40-13	
	SE	3.23	42-13	
	331, 335, 332, 336, 342, 344 w/JL2	R6	2.56	41-16
		S2	2.78	39-14
		S4	3.08	40-13
		S6	3.23	42-13
	34800	TA	2.78	39-14
		SM	3.08	40-13
		SO	3.23	42-13
	CHEV TYPE AXLE	R8	2.56	41-16
RA		2.73	41-15	
RC		3.07	43-14	
RE		3.31	43-13	
LIMITED SLIP DIFFERENTIAL				
31, 35, 32, 36, 42, 4400 EXC. JL2	R3	2.56	41-16	
	SB	2.78	39-14	
	SD	3.08	40-13	
	SF	3.23	42-13	
	TM	3.42	41-12	
	TO	3.91	43-11	
	TY	4.33	39-9	
31, 35, 32, 36, 42, 4400 WITH JL2 EXC. W46	R7	2.56	41-16	
	S3	2.78	39-14	
	S5	3.08	40-13	
	S7	3.23	42-13	
	S9	3.42	41-12	
4400 JL2 WITH W46 C D	T3	3.91	43-11	
	SH	3.23	42-13	
	SJ	3.42	41-12	
4800	SL	3.91	43-11	
	TB	2.78	39-14	
	SN	3.08	40-13	
CHEV TYPE AXLE	SP	3.23	42-13	
	R9	2.56	41-16	
	RB	2.73	41-15	
	RD	3.07	43-14	
	RF	3.31	43-13	
	TL	3.55	39-11	
TN	3.73	41-11		

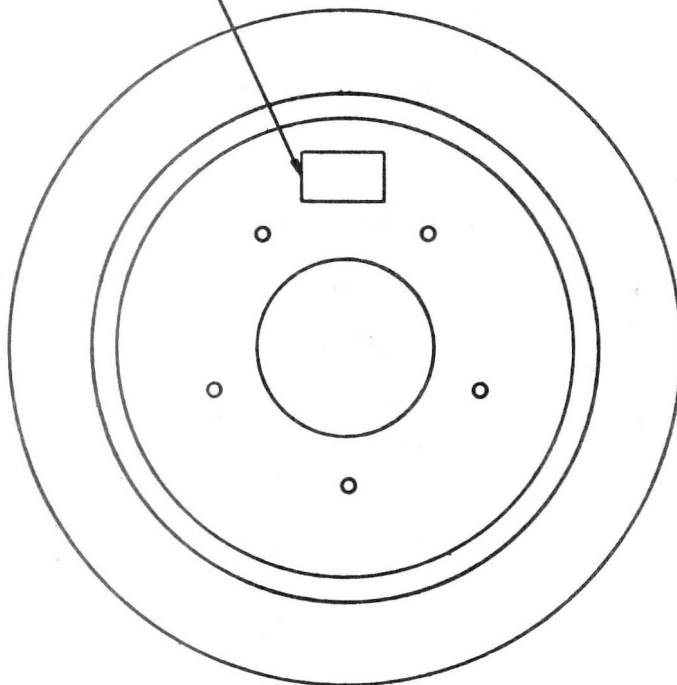


1970 DIFFERENTIAL IDENTIFICATION CODE



REAR VIEW OF
 AXLE ASSEMBLY

CODE LETTER TAPE TO BE
 FOUND IN THIS AREA



SIDE VIEW OF L.H.
 BRAKE DRUM

Series	Code	Gear Ratio
STANDARD TYPE DIFFERENTIAL		
331, 335, 332, 336, 342, 34400	R2	2.56
	SA	2.78
	SC	2.78
	SE	3.23
33535 & 33635 EXC. "JL2"	TV	2.78
	TX	3.08
33535 & 33635 WITH "JL2"	R2	2.56
	SA	2.78
	SC	3.08
	SE	3.23
34800	SI	2.56
	TA	2.78
	SM	3.08
	SO	3.23
LIMITED SLIP DIFFERENTIAL		
331, 335, 332, 336, 342, 34400 EXC. "W27"	R3	2.56
	SB	2.78
	SD	3.08
	SF	3.23
	SH	3.42
	SJ	3.91
	TM	3.42
EXC. W30, W31 WITH W30, W31	TO	3.91
ALUMINUM		
331, 335, 332, 336, 342, 34400 WITH "W27"	SV	3.23
	SX	3.42
	SZ	3.91
33535 & 33635 EXC. "JL2"	TU	2.78
	TW	3.08
33535 & 33635 WITH "JL2"	R3	2.56
	SB	2.78
	SD	3.08
	SF	3.23
34800	ST	2.56
	TB	2.78
	SN	3.08
	SP	3.23

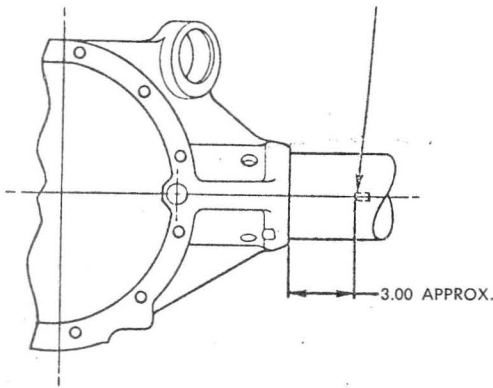
1971 DIFFERENTIAL IDENTIFICATION CODE

STAMPED CODE SYMBOLS 3/16" MIN. HEIGHT TO BE LOCATED ON R.H. TUBE FRONT SURFACE AS SHOWN. THE TWO LETTER CODE IS TO BE FOLLOWED BY THE MANUFACTURING DIVISION'S CODE LETTER★. THE THREE LETTER CODE IS FOLLOWED BY A NUMBER (1-366) INDICATING THE DAY OF YEAR BUILT.

TO BE STAMPED SO SYMBOLS ARE RIGHT SIDE UP WITH AXLE IN CAR POSITION.

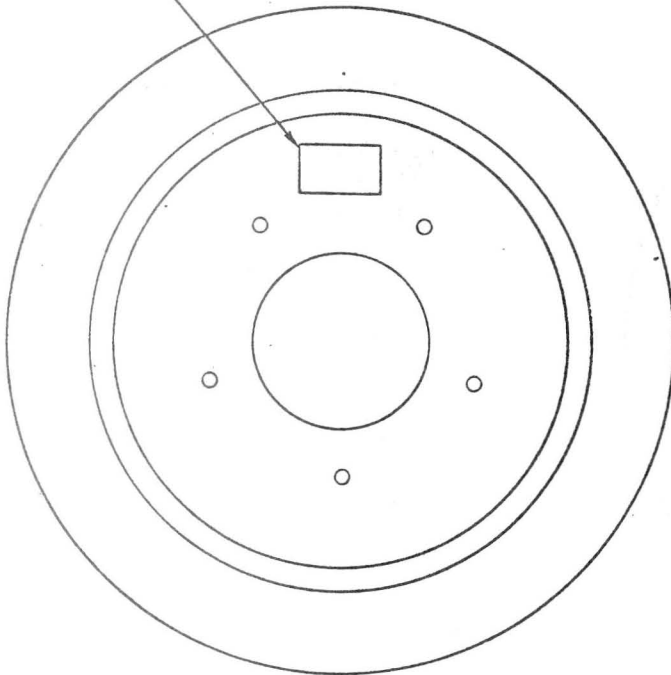
★NOTE: THIRD LETTER ADDED TO CODE TO DESIGNATE THE MANUFACTURING DIVISION.

CODE	MANUFACTURER
O	OLDSMOBILE
B	BUICK
P	PONTIAC
C	CHEVROLET
K	MCKINNON



REAR VIEW OF AXLE ASSEMBLY

CODE LETTER TAPE TO BE FOUND IN THIS AREA



SIDE VIEW OF R.H. BRAKE DRUM

SERIES	CODE	GEAR RATIO
STANDARD		
Exc. 348	R2	2.56
	SA	2.73
	SC	3.08
	SR	3.23
	SE	3.42
348	SI	2.56
	TA	2.73
	SM	3.08
	TG	3.23
LIMITED SLIP		
Exc. 348	R3	2.56
	SB	2.73
	SD	3.08
	SS	3.23
Exc. W30	SH	3.42
	With W30	
With W30	TM	3.42
	TO	3.73
348	ST	2.56
	TB	2.73
	SN	3.08
	TH	3.23

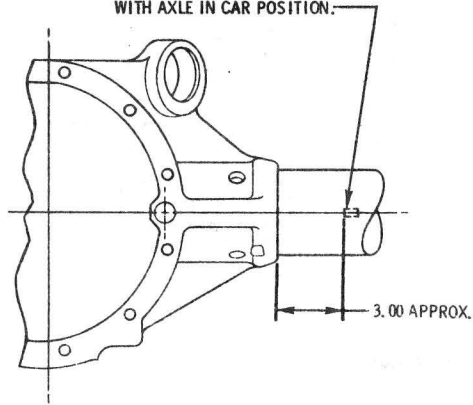
1972 DIFFERENTIAL IDENTIFICATION CODE

STAMPED CODE SYMBOLS 3/16" MIN. HEIGHT TO BE LOCATED ON R.H. TUBE FRONT SURFACE AS SHOWN. THE TWO LETTER CODE IS TO BE FOLLOWED BY THE MANUFACTURING DIVISION'S CODE LETTER. THE THREE LETTER CODE IS FOLLOWED BY A NUMBER (1-366) INDICATING THE DAY OF YEAR BUILT.

★ NOTE: THIRD LETTER ADDED TO CODE TO DESIGNATE THE MANUFACTURING DIVISION.

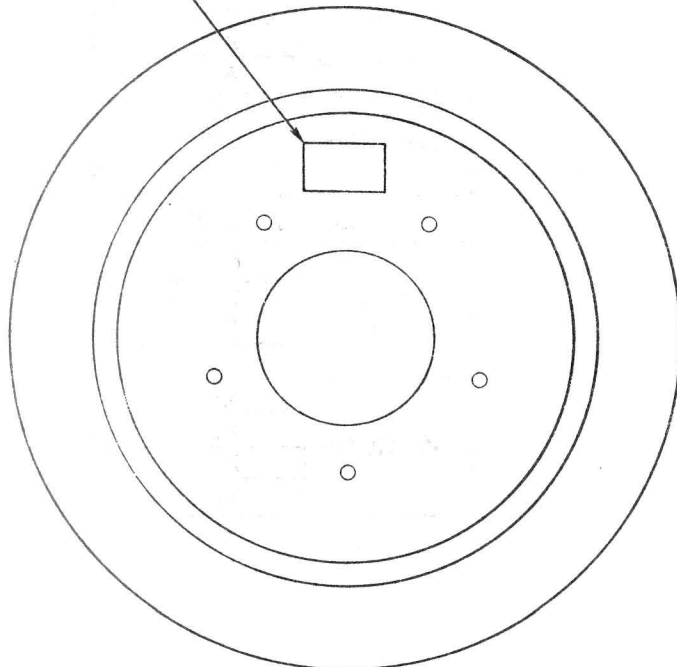
CODE	MANUFACTURER
O	OLDSMOBILE
B	BUICK
P	PONTIAC
C	CHEVROLET
K	MC

TO BE STAMPED SO SYMBOLS ARE RIGHT SIDE UP WITH AXLE IN CAR POSITION.



REAR VIEW OF AXLE ASSEMBLY

CODE LETTER TAPE TO BE FOUND IN THIS AREA



SERIES	CODE	GEAR RATIO
STANDARD		
EXC 348	SA	2.73
	SC	3.08
	SR	3.23
348	TA	2.73
	SM	3.08
	TG	3.23
LIMITED SLIP		
EXC 348	SB	2.73
	SD	3.08
	SS	3.23
348	TM	3.42
	TO	3.73
	TH	3.23

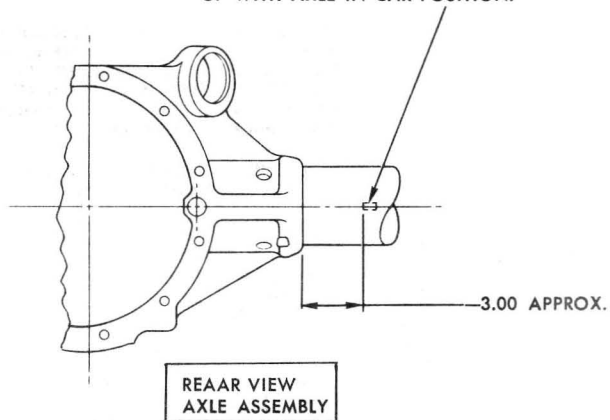
1973 DIFFERENTIAL IDENTIFICATION CODE

STAMPED CODE SYMBOLS 3/16" MIN. HEIGHT TO BE LOCATED ON R.H. TUBE FRONT SURFACE AS SHOWN. THE TWO LETTER CODE IS TO BE FOLLOWED BY THE MANUFACTURING DIVISION'S CODE LETTER★
THE THREE LETTER CODE IS FOLLOEED BY A NUMBER (1-366) INDICATING THE DAY OF YEAR BUILT.

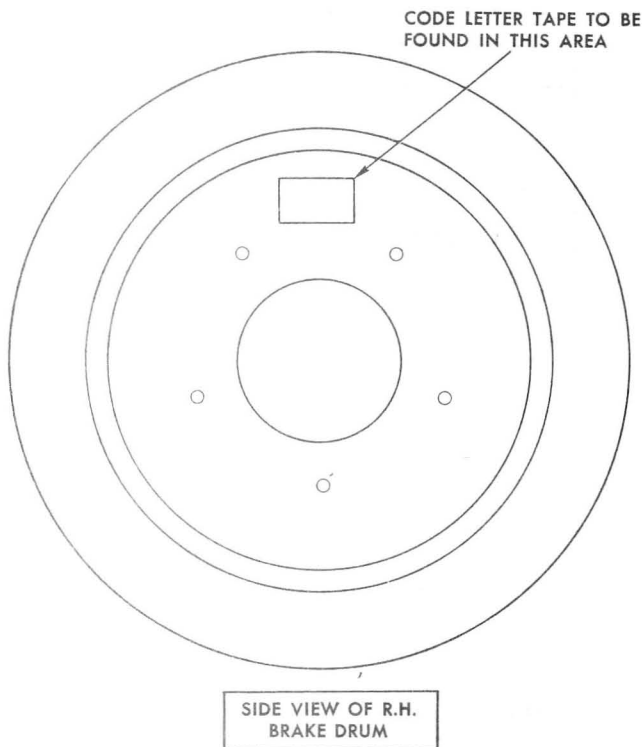
TO BE STAMPED SO SYMBOLS ARE RIGHT SIDE UP WITH AXLE IN CAR POSITION.

★NOTE: THIRD LETTER ADDED TO CODE TO DESIGNATE THE MANUFACTURING DIVISION.

CODE	MANUFACTURER
O	OLDSMOBILE
B	BUICK
P	PONTIAC
C	CHEVROLET
K	McKINNON



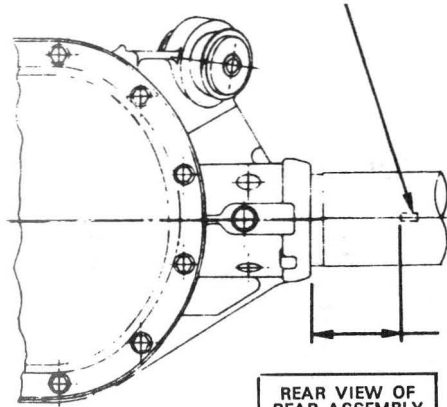
GREEN BORDER ON RATIO TAPE INDICATES LIMITED SLIP DIFFERENTIAL



Series	Code	Gear Ratio
STANDARD		
EXC. WAGONS	AC	2.73
	AD	3.08
	AE	3.23
WAGONS	WA	2.73
	WC	3.08
	WD	3.23
LIMITED SLIP		
EXC. WAGONS	CC	2.73
	CD	3.08
	CE	3.23
	CJ	3.42
WAGONS	XA	2.73
	XC	3.08
	XD	3.23
	XE	3.42



1974 DIFFERENTIAL IDENTIFICATION CODE



REAR VIEW OF REAR ASSEMBLY

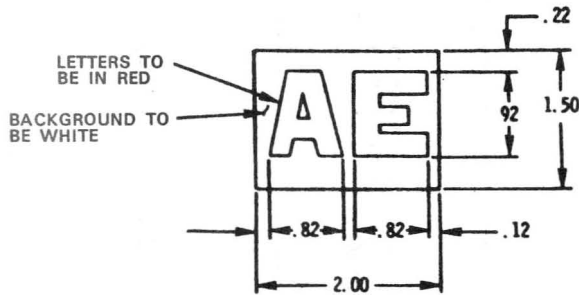
Stamped code symbols 3/16" min. height to be located on R.H. tube front surface as shown. The two letter code is to be followed by the manufacturing division's code letter*. The three letter code is followed by a number (1-365) indicating the day of year built.

To be stamped so symbols are right side up with axle in car position.

3.00 APPROX.

★NOTE: THIRD LETTER ADDED TO CODE TO DESIGNATE THE MANUFACTURING DIVISION.

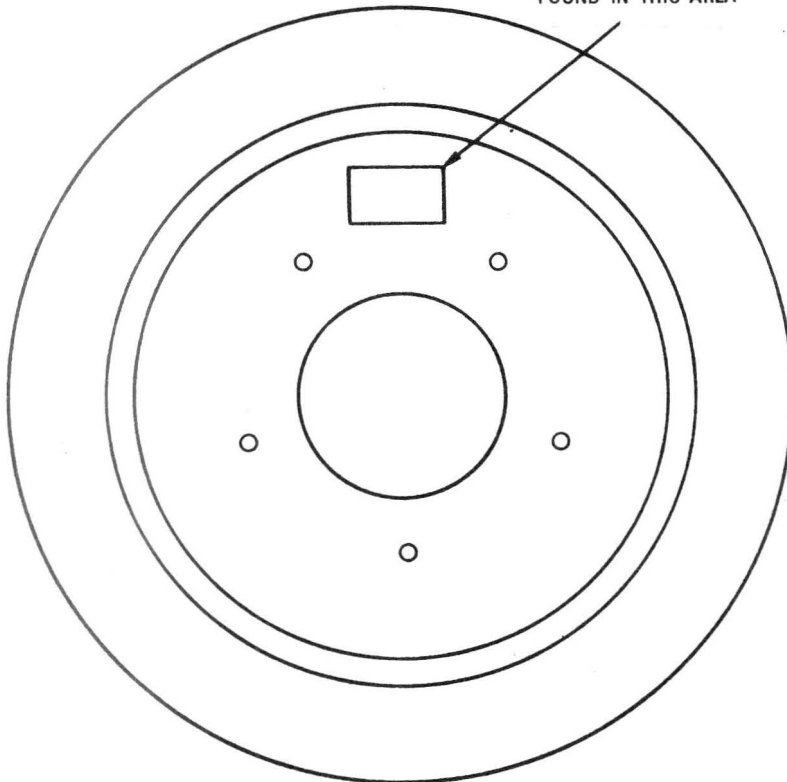
Code	Manufacturer
O	OLDSMOBILE
B	BUICK
P	PONTIAC
C	CHEVROLET
K	MCKINNON



CODE LETTER TAPE SPECIFICATIONS

LETTERS TO BE IN RED
 BACKGROUND TO BE WHITE

CODE LETTER TAPE TO BE FOUND IN THIS AREA



SIDE VIEW OF R.H. BRAKE DRUM

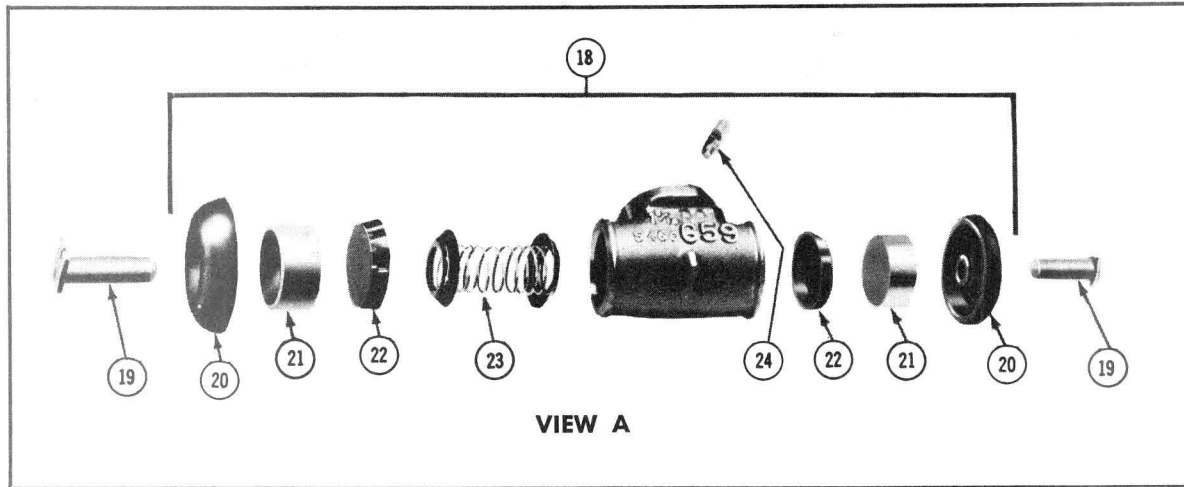
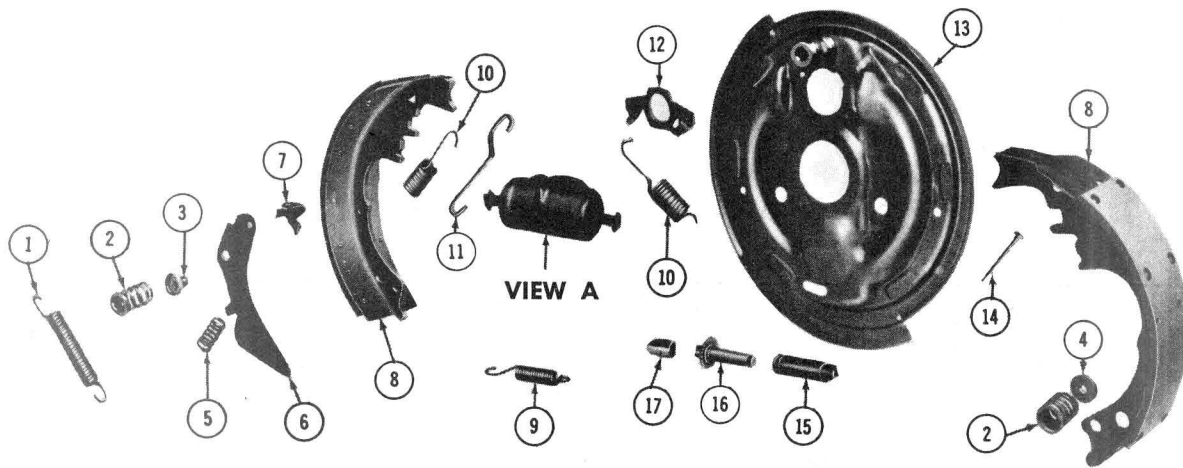
SERIES	CODE	GEAR RATIO
STANDARD		
EXC. WAGONS (8½")	AC	2.73
	AD	3.08
	AE	3.23
	AH	2.56
WAGONS (8⅞")	WA	2.73
	WC	3.08
	WD	3.23
LIMITED SLIP		
EXC. WAGONS (8½")	CC	2.73
	CD	3.08
	CE	3.23
	CH	2.56
	CJ	3.42
WAGONS (8⅞")	XA	2.73
	XC	3.08
	XD	3.23

1975 REAR AXLE IDENTIFICATION CODES

AXLE CODE	AXLE RATIO	RING GEAR	TYPE	GEAR TEETH
AH	2.56	8.50	STD	41:16
AC	2.73	8.50	STD	41:15
AD	3.08	8.50	STD	40:13
AE	3.23	8.50	STD	42:13
CH	2.56	8.50	POS	41:16
CC	2.73	8.50	POS	41:15
CD	3.08	8.50	POS	40:13
CE	3.23	8.50	POS	42:13
WF	2.56	8.875	STD	41:16
WA	2.73	8.875	STD	41:15
WC	3.08	8.875	STD	40:13
WD	3.23	8.875	STD	42:13
XF	2.56	8.875	POS	41:16
XA	2.73	8.875	POS	41:15
XC	3.08	8.875	POS	40:13
XD	3.23	8.875	POS	42:13

1976 REAR AXLE IDENTIFICATION CODES

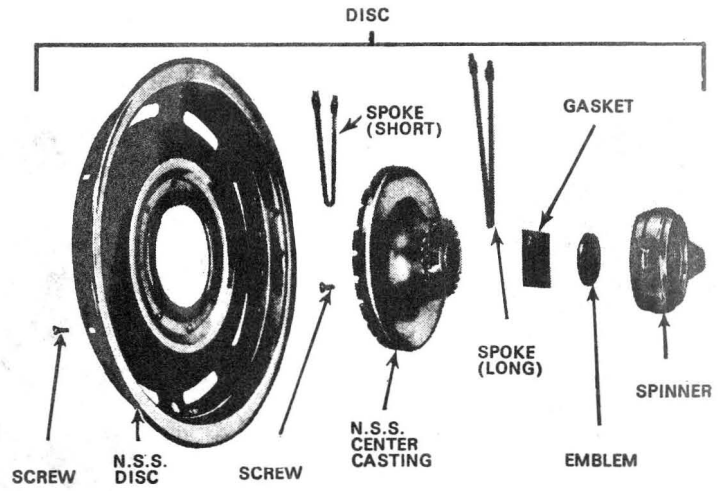
AXLE CODE	AXLE RATIO	RING GEAR	TYPE	GEAR TEETH
AA	2.41	8.50	STD	41:17
AH	2.56	8.50	STD	41:16
AC	2.73	8.50	STD	41:15
AD	3.08	8.50	STD	40:13
CA	2.41	8.50	POS	41:17
CH	2.56	8.50	POS	41:16
CC	2.73	8.50	POS	41:15
CD	3.08	8.50	POS	40:13
WF	2.56	8.875	STD	41:16
WA	2.73	8.875	STD	41:15
WC	3.08	8.875	STD	40:13
XF	2.56	8.875	POS	41:16
XA	2.73	8.875	POS	41:15
XC	3.08	8.875	POS	40:13



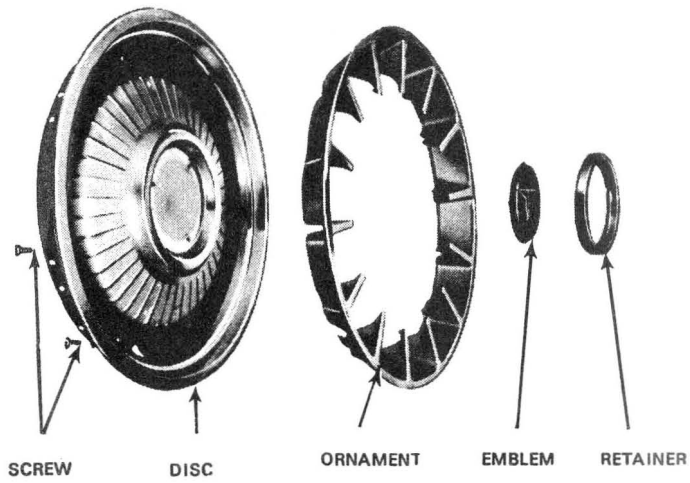
1968 WHEEL BRAKE ASSEMBLIES

Key	Description	Group
1	Spring, Brake Shoe Automatic Adjusting Lever —Override	5.107
2	Cup and Spring, Brake Shoe Hold Down	5.043
3	Sleeve, Brake Shoe Hold Down Spring	5.103
4	Washer, Brake Shoe Hold Down Spring	5.043
5	Spring, Brake Shoe Automatic Adjusting Lever—Return	5.107
6	Actuator, Brake Adjuster	5.103
7	Pivot, Brake Shoe Automatic Adjusting Lever	5.103
8	Shoe and Lining Set, Front Brake	5.017
9	Spring, Front and Rear Brake Shoe Adjuster Screw	5.026
10	Spring, Brake Shoe Pull Back	5.026
11	Link, Brake Actuator Pivot	5.105
12	Plate, Brake Shoe Guide	5.045

Key	Description	Group
13	Plate, Brake Backing	5.001
14	Pin, Brake Shoe Hold Down	5.041
15	Nut, Brake Shoe Adjusting Screw Pivot	5.111
16	Screw, Brake Adjusting Sprocket	5.110
17	Socket, Brake Shoe Adjusting Screw	5.111
18	Cylinder, Wheel Brake	4.665
19	Link, Wheel Cylinder to Brake Shoe Thrust	4.675
20	Boot, Wheel Brake Cylinder	4.670
21	Piston, Wheel Brake Cylinder	4.668
22	Cup, Wheel Cylinder Piston	4.667
23	Spring, Wheel Cylinder	4.669
24	Valve, Wheel Cylinder Bleeder	4.666

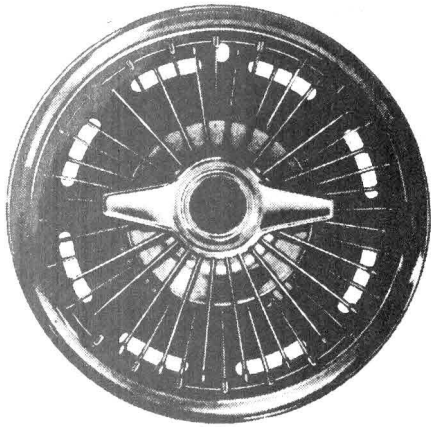


1964—N95 OPT. SIMULATED WIRE WHEEL

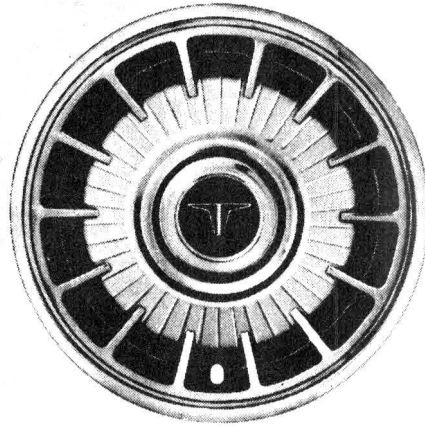


1964—F85 P02 DLX. DISC

1964 WHEEL DISC EXPLODED VIEWS — GROUP 5.871

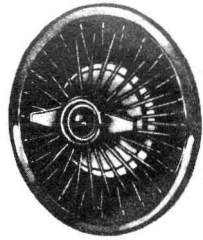


N95 OPT.
SIMULATED WIRE WHEEL DISC

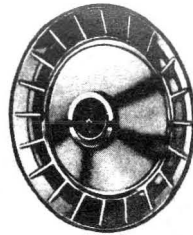


P02 OPT.
F85—DLX. DISC

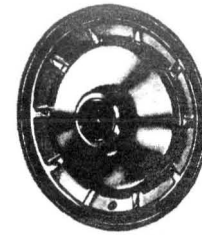
1964 WHEEL DISC ASSEMBLIES — GROUP 5.871



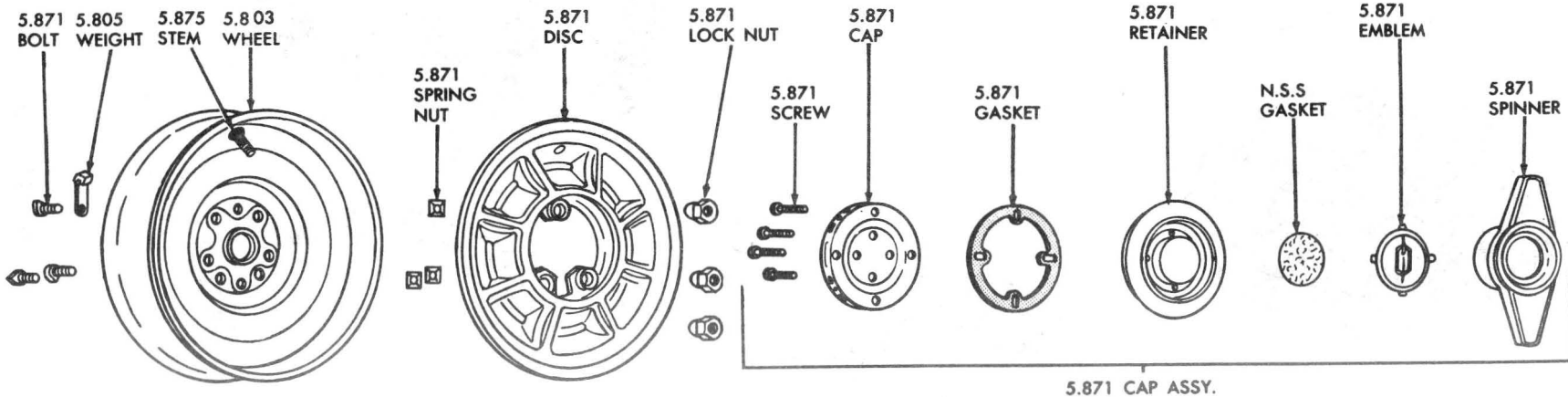
N95
WIRE WHEEL



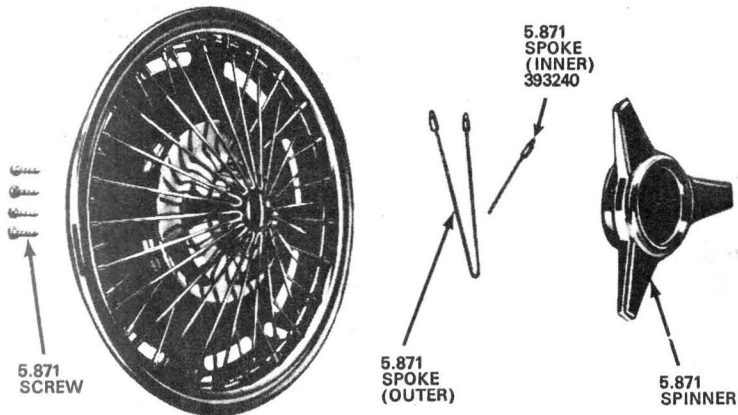
P02
DELUXE
WHEEL DISC (WIRE)



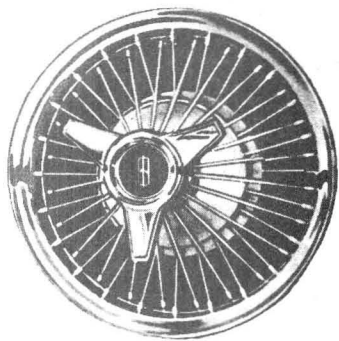
P01
STANDARD
WHEEL DISC



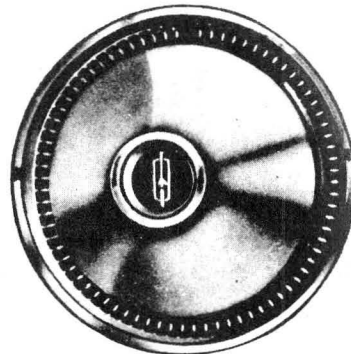
1965 N93 CUSTOM DELUXE WHEEL DISC DETAILS



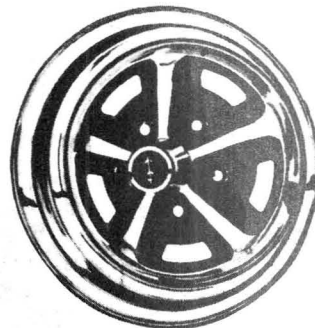
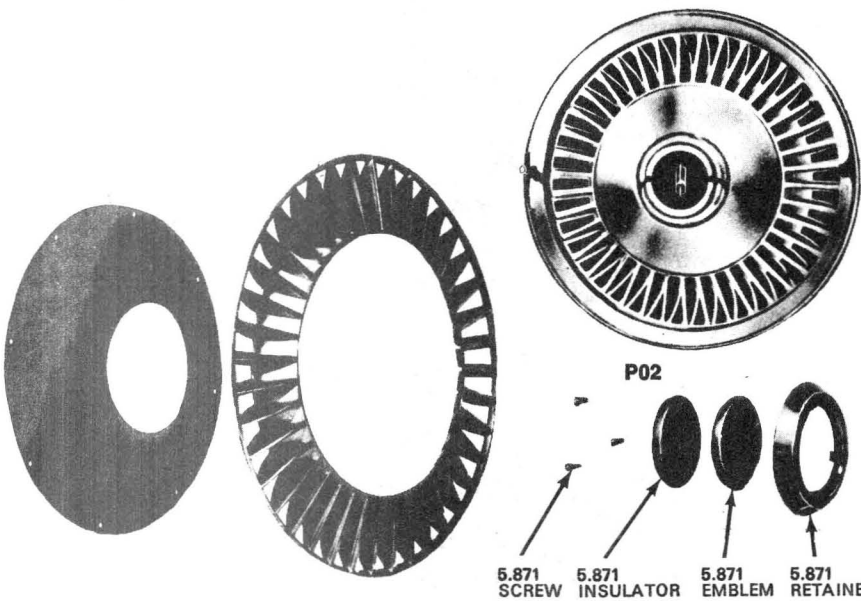
N95—EXPLODED VIEW



P02
SIMULATED WIRE WHL.
(Not Available)

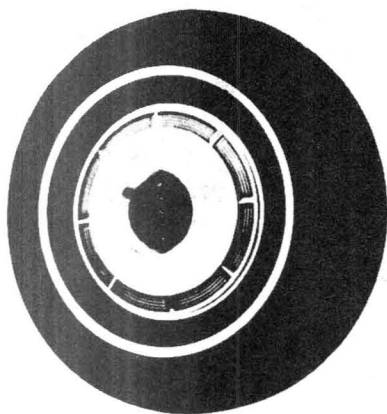


P01
STD. WHL. DISC

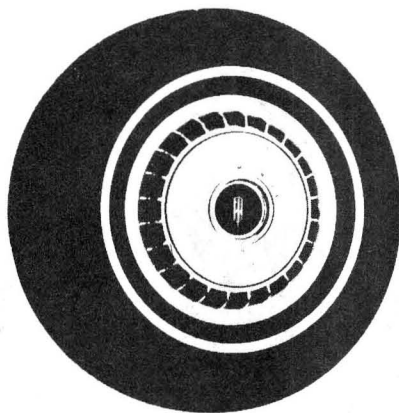


P05
SUPER STOCK I
(5.803) CHROME WHL.

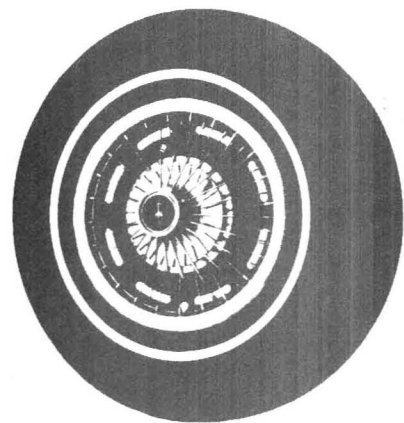
1966 WHEEL DISC (5.871) HUB CAP (5.858)



P01 OPT.
(14" WHEEL)



P02 OPT.
(14" WHEEL)

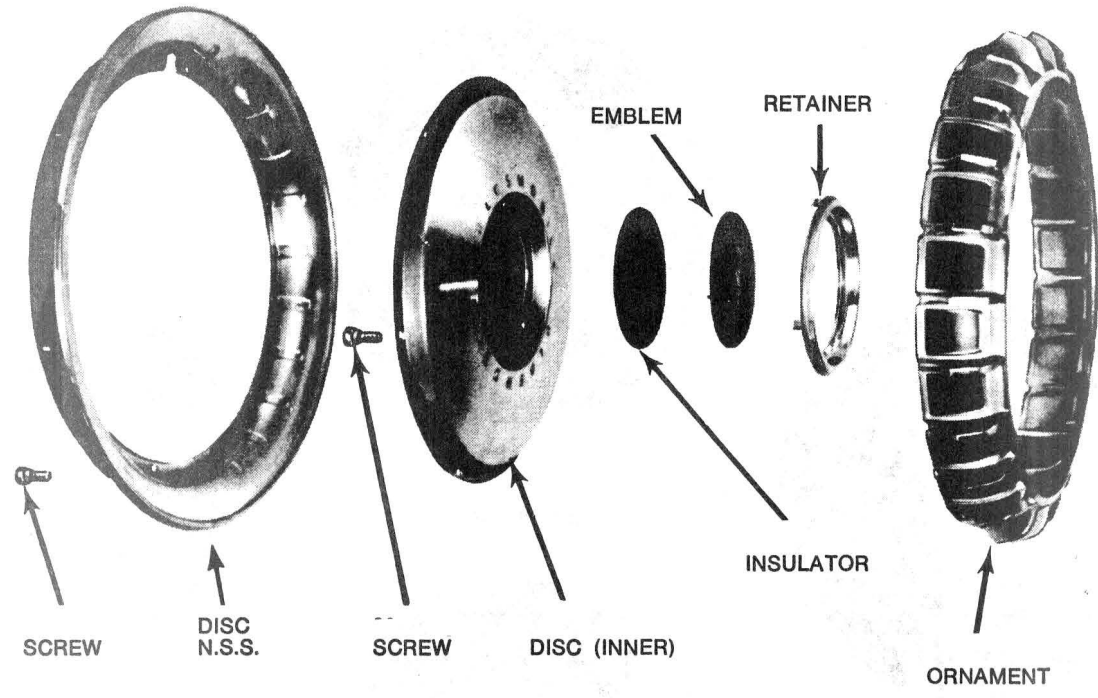


N95 OPT.
(14" WHEEL)



(P05—OPT.—SUPER STOCK I)

1967 WHEEL DISC ASSEMBLIES — GROUP 5.871

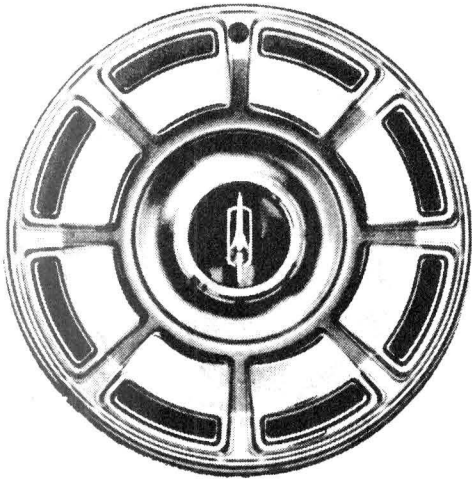


1967—P02 DLX. DISC

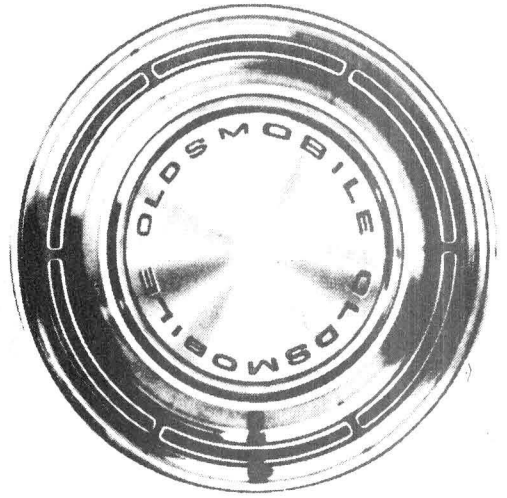
1967 WHEEL DISC EXPLODED VIEWS — GROUP 5.871

GM

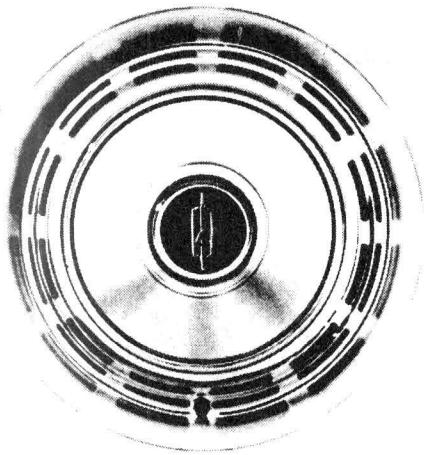
F86
OLDSMOBILE
PARTS CATALOGUE



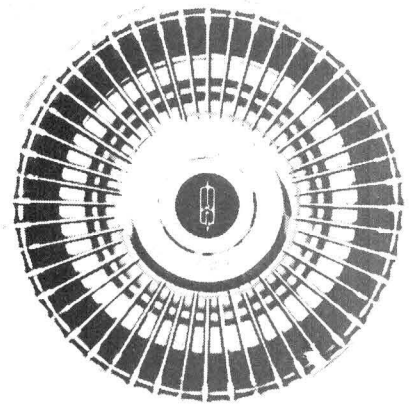
(PA-1 OPT.)



(PO-1 OPT.)

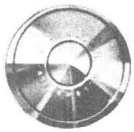


(PO-2 OPT.)

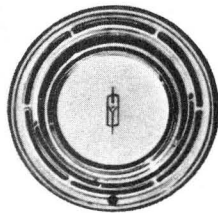


(N-95 OPT.)

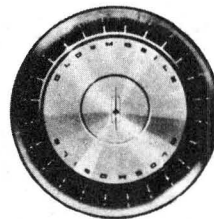
1968 WHEEL DISCS



Cap

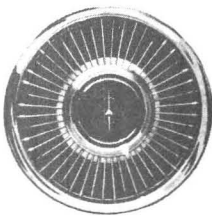


PO1-14"

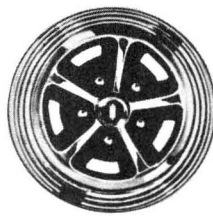


PO2-14"

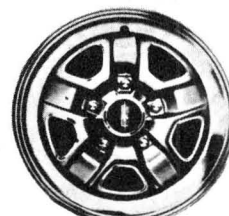
1969 WHEEL DISC AND WHEELS



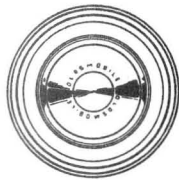
N95-14"



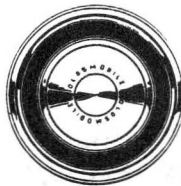
PO5-14"



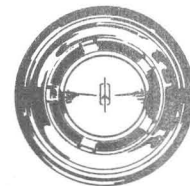
N66-14"



STD.
 4—406211—CAP



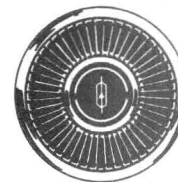
P06-14"
 4—406211—CAP
 4—9796919—RING
 5—334397—WHEEL



P01-14"
 4—404977—DISC
 1—983111—PKG.



P02-14"
 4—404692—DISC (complete)
 4—404693—DISC (less ornament and emblem)
 4—404695—ORNAMENT (ribbed)
 4—404696—EMBLEM (rocket)



N95-14"
 4—402495—DISC



P05-14"
 5—406070—WHEEL
 5—393796—ORNAMENT
 5—393799—RETAINER
 20—414188—NUT

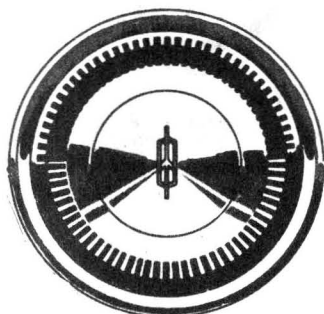


N66-14"
 5—409937—WHEEL
 4—545910—TRIM RING
 5—402926—ORNAMENT
 25—414367—BEZEL
 25—9420065—SCREW
 20—414188—NUT

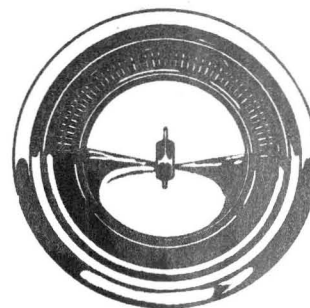
1970 WHEEL DISC AND WHEELS



STD.
4-412682 CAP



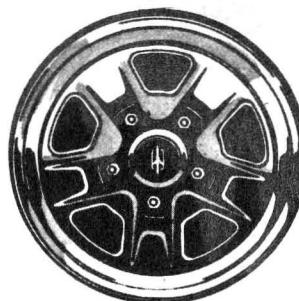
P02-14"
1-983193-DISC PKG.
4-407896-DISC
4-407899 EMBLEM
4-407897 ORN.
4-404693 DISC (LESS ORN.)



P01
1-983192-DISC PKG.
407615-DISC

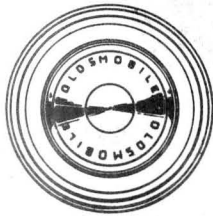


(P05-SUPER STOCK I)
5-406070 WHEEL
5-393796 ORNAMENT
5-393799 RETAINER

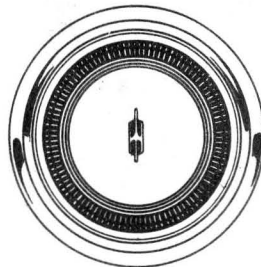


(N66-SUPER STOCK II)
5-406069 WHEEL
5-9796919 RING, TRIM
25-414367 BEZEL
5-402926 ORNAMENT

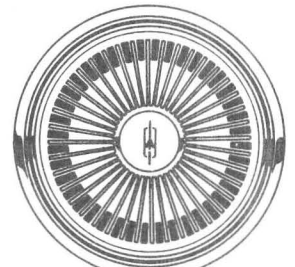
1971 WHEEL DISCS AND WHEELS



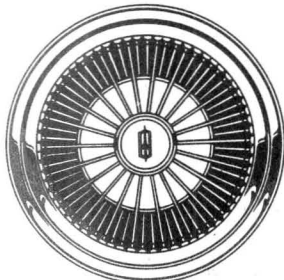
(STD).
 4-412682 CAP



(PO2-14")
 1-983193 DISC PKG.
 4-407896 DISC
 4-404693 DISC (LESS ORN.)
 4-407899 EMBLEM
 4-407897 ORNAMENT



(PO1)
 1-983286 DISC PKG.
 4-410220 DISC



(N95-WIRE WHEEL)
 4-410649 DISC

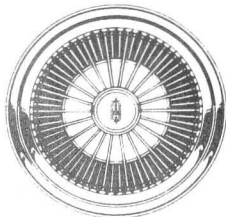


(PO5-SUPER STOCK I)
 5-406070 WHEEL
 5-393796 ORNAMENT
 5-393799 RETAINER



(N66-SUPER STOCK II)
 5-409937 WHEEL
 5-9796919 TRIM RING
 25-414367 BEZEL
 5-402926 ORNAMENT

1972 WHEEL DISCS AND WHEELS



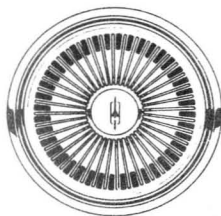
(N95 WIRE WHEEL)
4-414077—DISC



(SALON—DISC)
4-413422—DISC
4-410229—EMB.



***(N66—SUPER STOCK-II)**
5-409937—WHEEL—1st Type (Exc. Extruded Hub)
4-9796919—TRIM RING
25-414367—BEZEL
5-402926—ORN.—CONE TYPE
5-413087—2nd TYPE (With Extruded Hub)



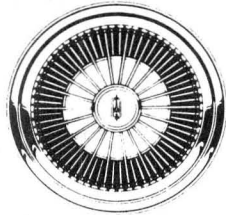
(P01)
4-412662—DISC



**** (N67—SUPER STOCK III)**
5-409937—WHEEL—1st Type (Exc. Extruded Hub)
4-9796919—TRIM RING
25-414367—BEZEL
5-402926—ORN.—CONE TYPE
5-413087—2nd TYPE (With Extruded Hub)

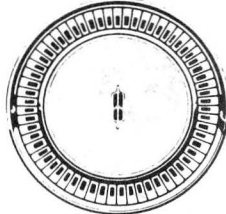
*CAST GRAY WHEEL
**WHEEL COLOR SAME LOWER BODY

1973 WHEEL DISCS AND WHEELS



(N95 WIRE WHEEL)-15"
 4-551484—DISC

(N94)-14"
 4-414077—DISC

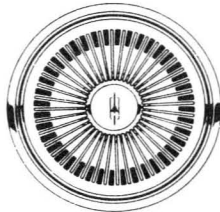


(SALON—DISC) -15"
 4-416308—DISC
 4-416573—EMB.



***(N66 or N67—SUPER STOCK-II or III) -14"**

5-409937—WHEEL
 4-9796919—TRIM RING
 25-414367—BEZEL
 5-402926—ORN.



(P01)-14"
 4-416511—DISC
(P02)-15"
 4-415121—15"

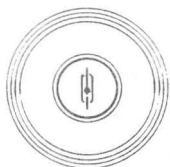


**** (N71 or N72—CUSTOM SPORT)-15"**

5-416614—WHEEL
 4-419269—TRIM RING
 25-414367—BEZEL
 5-402926—ORN.

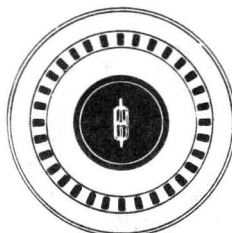
1974 WHEEL DISCS

NOTE: STD. WHEEL DISC NOT ILLUSTRATED.



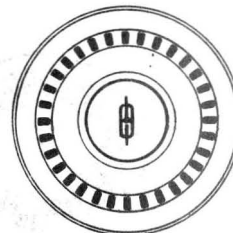
CHROME WHEEL HUBCAP (STD.)

5.858 - 550632 CAP



SALON WHEEL DISC (Y78)

5.871 - 418931 DISC
 5.871 - 418932 DISC (Less Emblem)
 5.871 - 418934 EMBLEM



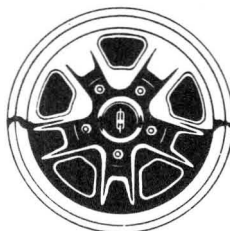
CHROME WHEEL DISC (PA1)

5.871 - 982017 DISC PKG.
 5.871 - 550619 DISC



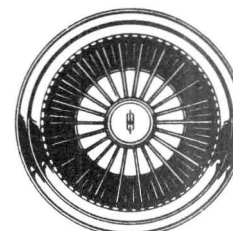
SUPER STOCK II WHEEL (N71)
CAST-GRAY COLOR

5.871 - 414367 BEZEL
 5.871 - 419269 TRIM RING
 5.871 - 552293 ORNAMENT PKG.
 5.803 - 416614 WHEEL



SUPER STOCK III WHEEL (N72)
LOWER BODY COLOR

5.871 - 414367 BEZEL
 5.871 - 419269 TRIM RING
 5.871 - 552293 ORNAMENT PKG.
 5.803 - 416614 WHEEL



SIMULATED WIRE WHEEL DISC (N95)

5.871 - 551484 DISC
 5.871 - 231917 ORNAMENT
 5.871 - 231919 SPOKES

1975-76 HUB CAPS, WHEEL COVERS AND WHEELS